

SUZUKI PARTS CATALOGUE

DR150



PREFACE

This catalogue lists the spare parts used for the following model. Please do refer to the parts catalogue and indicate the parts number and the name listed in this catalogue correctly when you need to replace the spare parts.

| Design Code | Factory Reference No. (Abbr. form in the catalogue) | Engine Reference No. | Engine Cad No. |
|-------------|---|----------------------|-----------------|
| DR150 | FA403JC100-XXE09 | EG3JC10-E09 | 10091H3J018H000 |

一、 How to place an order for spare parts?

1. Required document:

The number must be provided as follow when order the spare parts:

- (a) The Engine parts: parts number and the Engine number
- (b) The Body parts: parts number and the Frame number

2. Revision

The Revised Version would be published at a suitable time when the parts Catalogue needed to be revised or renewed. In this case, the edition number would be marked on the cover. The parts would have some difference because our products are improved continuously and the modified parts no. will not be informed before the new edition published.

二、 How to use the parts catalogue?

1. Size

The unit of the parts' size indicated in the catalogue is 'mm', for example:

| Parts name | Description |
|------------|---------------------------|
| Bolt 6×12 | Diameter 6mm, Length 12mm |

| | |
|-------------------------|--|
| O Ring D: 3.0, ID: 29.5 | Section diameter 3mm, inner diameter 29.5mm |
| Bearing 35×72×17 | Inner diameter 35mm, Outer diameter 72mm, Thickness 17mm |

2. Abbr.

The meaning of the Abbreviations in the catalogue are as the followings:

D: Section diameter NT: Number of Teeth L: Length ID: Inner diameter W: Width

OPT: Optional T: Thickness OD: Outer diameter OS: Over size

STD: Standard US: Under size LH: Left hand side RH: Right hand side

3. Assy and the inner parts

The part number with a hyphen '-' in the front means this part could be supplied with the Assy (or the comp.), also could be supplied separately.

For example:

Item 1 CYLINDER HEAD ASSY

Item1-1 PIN,CAMSHAFT COVER

That means Item1-1 can be supplied with Item 1 and aslo can be supplied separately.

4. The illustrations in the catalogue are just for the purpose to distinguish the parts. There might be some discrepancies between the illustrations and the real parts.. Furthermore, the illustrations can not be used for the assembling purpose. When assembling, pls use the Service Manual of the relative models.

5. The instruction for the color parts

The catalogue lists are being supervised by color code.

For example: Assy,Fuel Tank 44100H22000HF01 F01 is the colour code and means "RED".

When place an order for the color parts, please use the correct parts number (with the color code), based on the compound color sheet of the models.

This catalogue is edited according to the datas before 2022-8-31. The modification after that time should refer to the latest SPS(Spare Parts Modification notice).

DR150 COLOR TABLE FA403JC100–XXE09 3 COLOR STYLES

| REF. NO. | DESCRIPTION | PART NO. | a04 BLUE | a05 YELLOW | a07 BLACK | REMARKS |
|----------|---------------------------------------|-----------------|-------------|---------------|--------------|---------------|
| 1 | TANK COMP, FUEL | 44110H40000H000 | 623 | 210 | 501 | |
| 2 | COVER SET, FUEL TANK, R | 44017H4010HH000 | F04 | F05 | F02 | |
| 3 | COVER, FUEL TANK, R | 44171H40100H000 | 913 | 521 | 521 | NOT SUPPLY |
| 4 | TAPE, FUEL TANK RIGHT COVER, NO. 1 | 68225H40130H000 | TL1 | TL2 | S52 | |
| 5 | TAPE, FUEL TANK RIGHT COVER, NO. 2 | 68125H40110H000 | TL1 | TL2 | S52 | |
| 6 | COVER SET, FUEL TANK, L | 44018H4010HH000 | F04 | F05 | F02 | |
| 7 | COVER, FUEL TANK, L | 44181H40100H000 | 913 | 521 | 521 | NOT SUPPLY |
| 8 | TAPE, FUEL TANK LEFT COVER, NO. 1 | 68226H40130H000 | TL1 | TL2 | S52 | |
| 9 | TAPE, FUEL TANK LEFT COVER, NO. 2 | 68126H40110H000 | TL1 | TL2 | S52 | |
| 10 | COVER, FRAME, L | 47211H40100H000 | 521 | 521 | 521 | |
| 11 | COVER, FRAME, R | 47111H40100H000 | 521 | 521 | 521 | |
| 12 | EMBLEM, SUZUKI | 68131H40100H000 | BLA | SIL | SIL | |
| 13 | LID SET, FRAME COVER. R | 47012H4010AH000 | F03 | F04 | F02 | |
| 14 | LID, FRAME COVER, R | 47112H40100H000 | 913 | 521 | 521 | |

DR150 COLOR TABLE FA403JC100–XXE09 3 COLOR STYLES

| REF. NO. | DESCRIPTION | PART NO. | a04 BLUE | a05 YELLOW | a07 BLACK | REMARKS |
|----------|-------------------------|-----------------|-------------|---------------|--------------|---------------|
| 15 | TAPE, TAIL COVER, R | 68165H40100H000 | TL1 | TL2 | S52 | |
| 16 | LID SET, FRAME COVER. L | 47022H4010AH000 | F03 | F04 | F02 | |
| 17 | LID, FRAME COVER, L | 47212H40100H000 | 913 | 521 | 521 | |
| 18 | TAPE, TAIL COVER, L | 68167H40100H000 | TL1 | TL2 | S52 | |
| 19 | COVER, SEAT TAIL, R | 45511H40100H000 | 913 | 521 | 521 | |
| 20 | COVER, SEAT TAIL, L | 45512H40100H000 | 913 | 521 | 521 | |
| 21 | PANEL, COWLING | 94414H40100H000 | 521 | 521 | 521 | |
| 22 | FENDER, FRONT | 53111H40100H000 | 913 | 521 | 521 | |
| 23 | CARRIER COMP, REAR | 46310H40101H000 | 841 | 841 | 841 | |
| 24 | CARRIER, REAR | 46311H40100H000 | 841 | 841 | 841 | NOT SUPPLY |
| 25 | EMBLEM, SUZUKI | 68281H40100H000 | SIL | SIL | SIL | |

1

Fig. 9 CARBURETOR (P12-S090-0002)

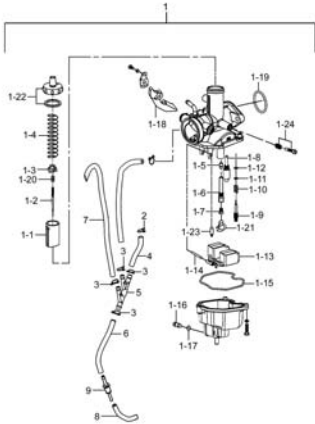


Fig. 10 AIR CLEANER (P12-S100-0005)

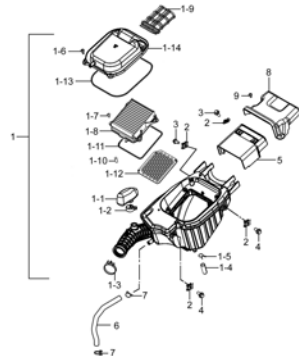


Fig. 11 MUFFLER (P12-S110-0005)

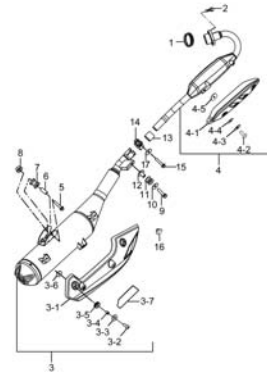


Fig. 12 2ND AIR VAVLE (P12-S120-0002)

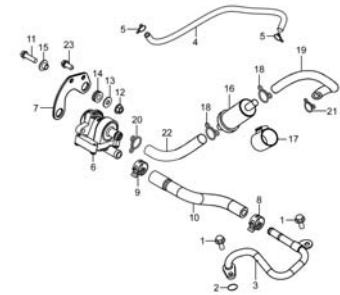


Fig. 13 OIL PUMP (P12-S130-0003)

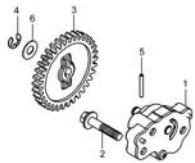


Fig. 14 CLUTCH (P12-S140-0004)

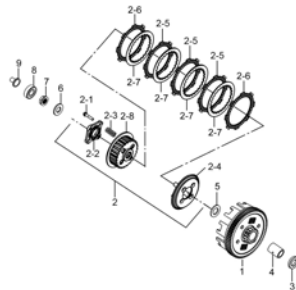


Fig. 15 TRANSMISSION (P12-S150-0011)

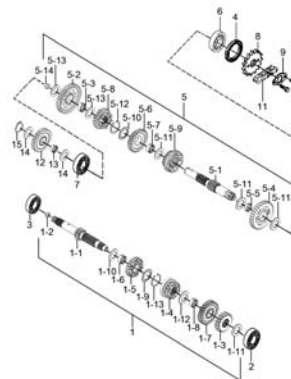


Fig. 16 GEAR SHIFTING (P12-S160-0003)

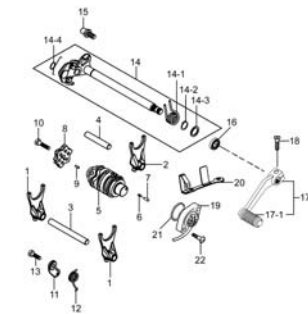


Fig. 17 KICK STARTER (P12-S165-0002)

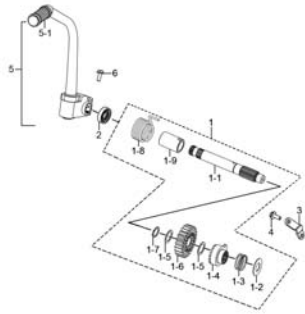


Fig. 18 STARTING MOTOR (P12-S170-0003)

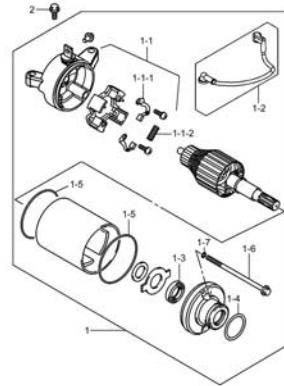


Fig. 19 MAGNETO (P12-S180-0002)

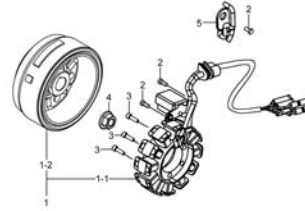


Fig. 20 BATTERY (P12-S190-0011)

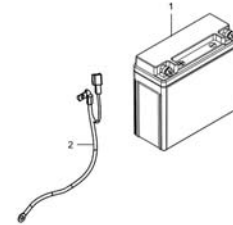


Fig. 21 ELECTRICAL (P12-S200-0005)

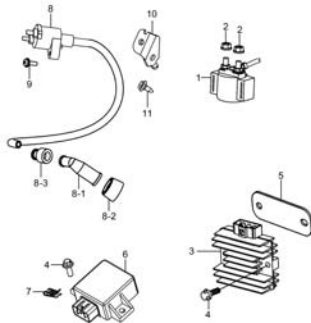


Fig. 22 SPEEDOMETER (P12-S210-0005)

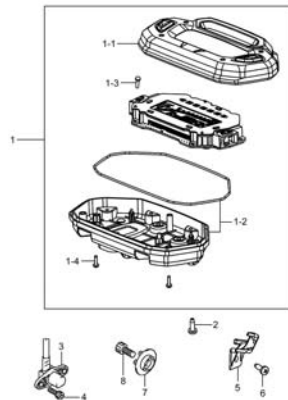


Fig. 23 HEADLAMP (P12-S220-0003)

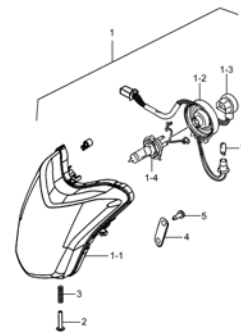


Fig. 24 TURN SIGNAL LAMP (P12-S230-0006)

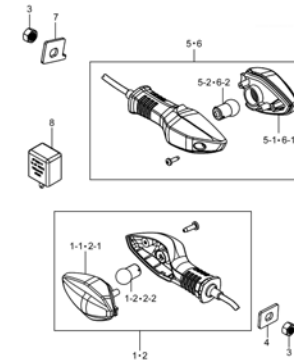


Fig. 25 REAR COMBINATION LAMP
(P12-S240-0005)

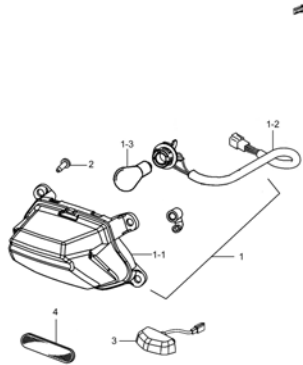


Fig. 26 WIRING HARNESS (P12-S250-0006)

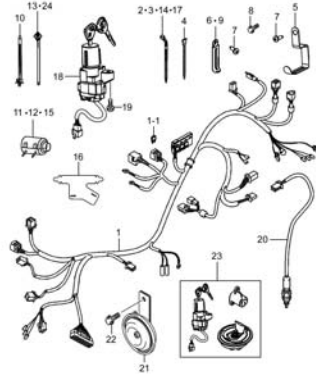


Fig. 27 FRAME (P12-S260-0006)

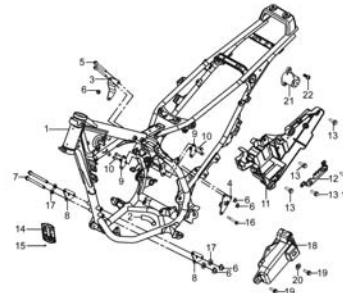


Fig. 28 STAND (P12-S270-0003)

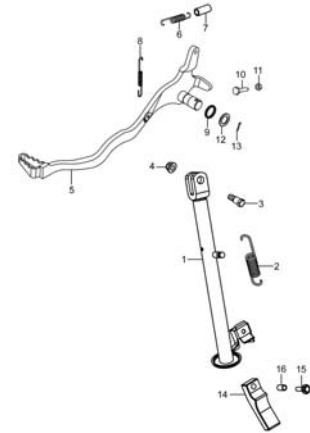


Fig. 29 FOOTREST (P12-S280-0005)

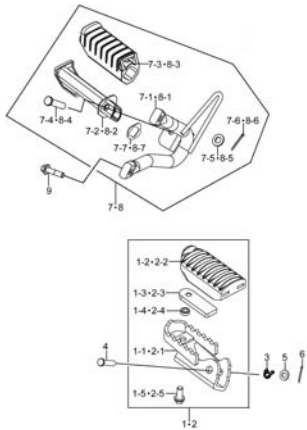


Fig. 30 FUEL TANK (P12-S290-0005)

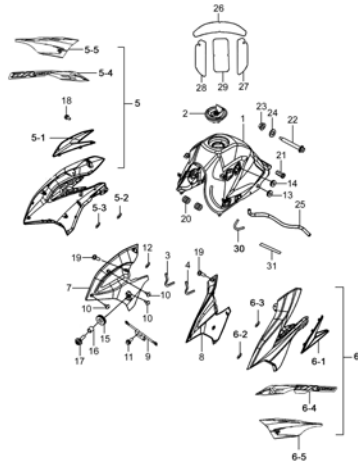


Fig. 31 FUEL COCK (P12-S300-0002)

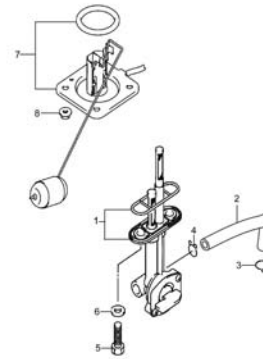


Fig. 32 FRAME COVER (P12-S310-0006)

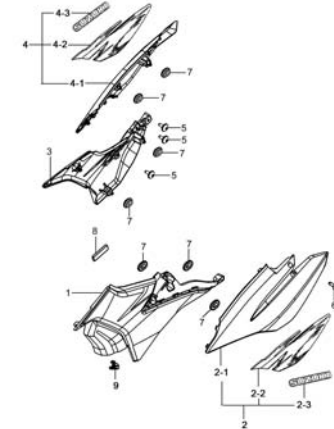


Fig. 33 FRONT FENDER (P12-S320-0002)

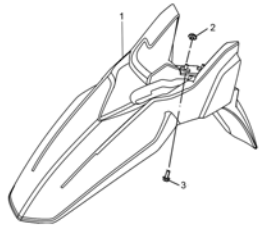


Fig. 34 HANDLEBAR (P12-S330-0006)

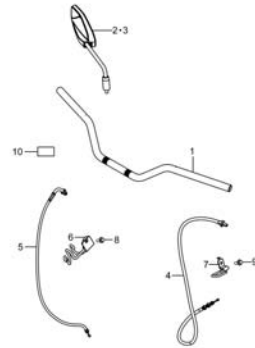


Fig. 35 HANDLE SWITCH (P12-S340-0008)

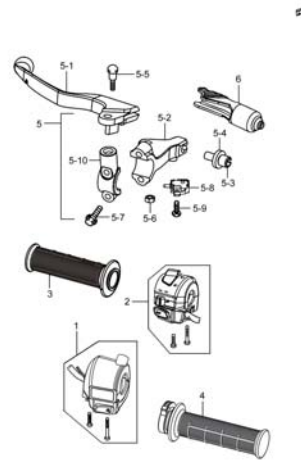


Fig. 36 REAR FENDER (P12-S350-0004)

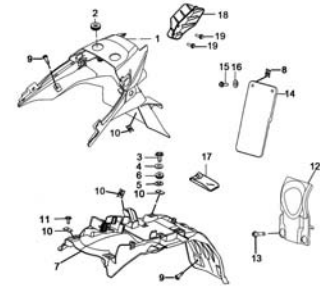


Fig. 37 COWLING (P12-S360-0005)

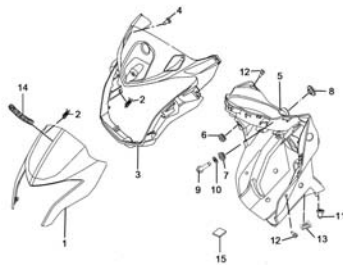


Fig. 38 LABEL (P12-S370-0006)

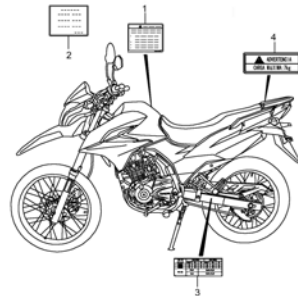


Fig. 39 SEAT (P12-S380-0003)

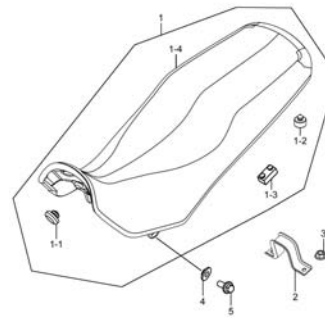
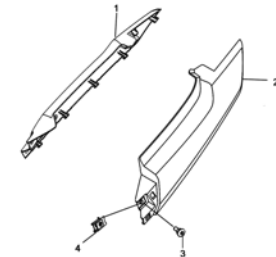


Fig. 40 COVER, SEAT TAIL (P12-S390-0003)



1

Fig. 41 STEERING STEM (P12-S400-0009)

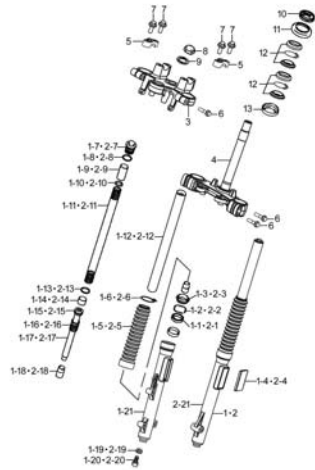


Fig. 42 FRONT WHEEL (P12-S410-0003)

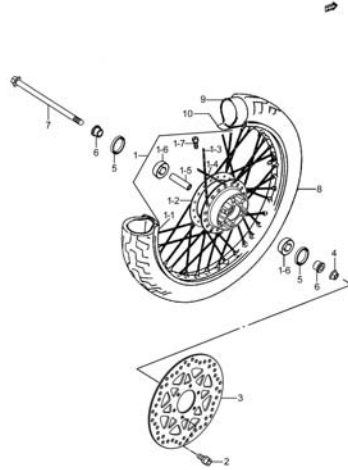


Fig. 43 FRONT CALIPER (P12-S420-0003)

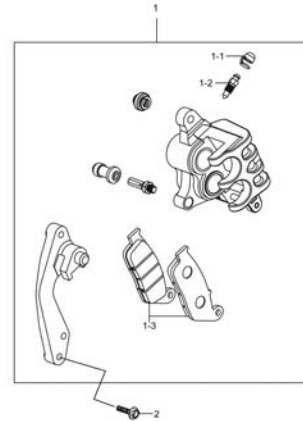


Fig. 44 FRONT BRAKE CYLINDER (P12-S430-0005)

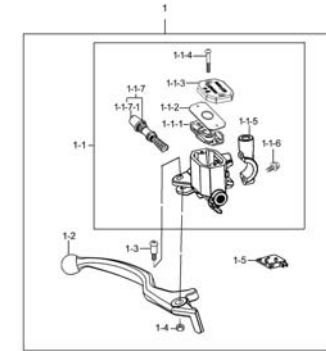


Fig. 45 HOSE, FRONT BRAKE (P12-S435-0005)



Fig. 46 REAR SWINGING ARM (P12-S440-0003)

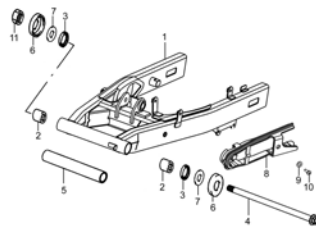


Fig. 47 REARSHOCK ABSORBER (P12-S450-0005)

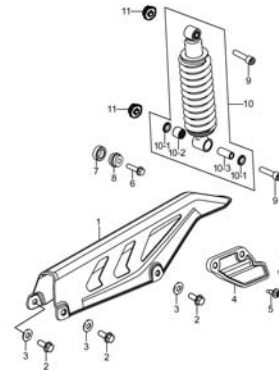


Fig. 48 REAR WHEEL (P12-S460-0004)

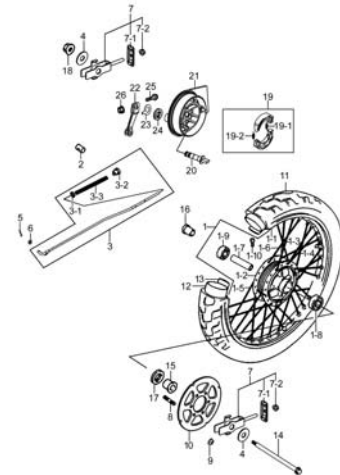
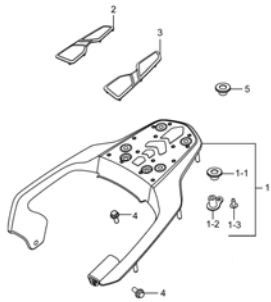


Fig. 49 CARRIER (P12-S480-0004)



1

Fig.1

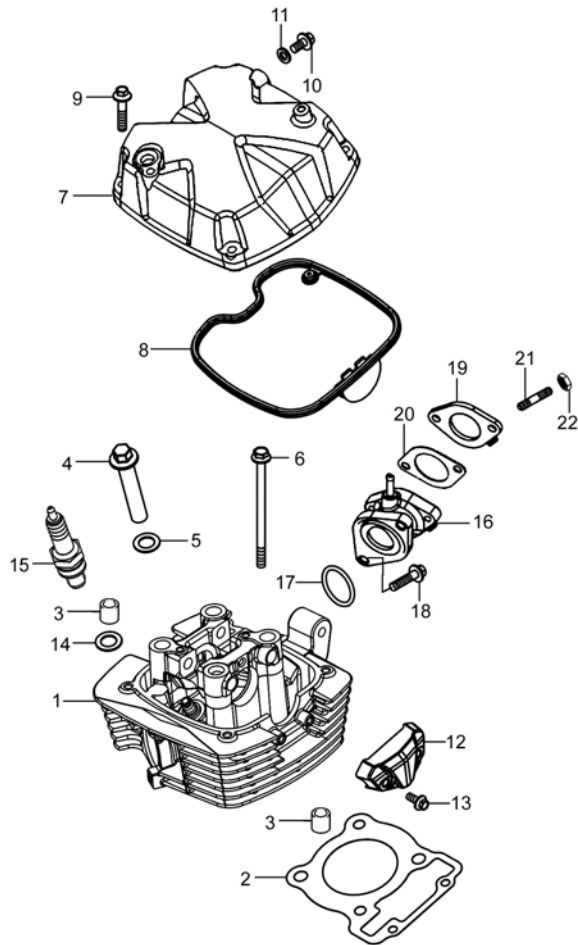


Fig.1 CYLINDER HEAD&CYLINDER HEAD COVER (P12-S010-0015)

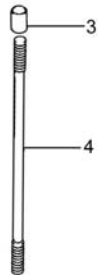
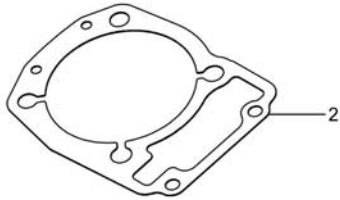
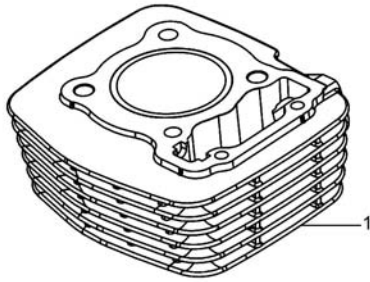
| REF. No. | PART No. | DESCRIPTION | Q'TY | REMARKS |
|----------|-----------------|----------------------------|------|---------|
| 1 | 11110H3J0H2H000 | HEAD COMP, CYLINDER | 1 | |
| 2 | 11141H3J030H000 | GASKET, CYLINDER HEAD | 1 | |
| 3 | 09206H10006H000 | PIN | 3 | |
| 4 | 11151H3J010H000 | NUT, CYLINDER HEAD | 4 | |
| 5 | 09160H12016H000 | WASHER, PLAIN | 4 | |
| 6 | 09103H06025H000 | BOLT | 2 | |
| 7 | 11171H2J021H000 | COVER, CYLINDER HEAD | 1 | |
| 8 | 11173H3J011H000 | GASKET, CYL HEAD COVER | 1 | |
| 9 | 01547-0630A-000 | BOLT | 4 | |
| 10 | 01547-0612A-000 | HEXAGON BOLT WITH FLANGE | 1 | |
| 11 | 09168-06018-000 | GASKET | 1 | |
| 12 | 11121H3J020H000 | COVER, CYLINDER HEAD, L | 1 | |
| 13 | 01547-0512A-000 | BOLTS, HEXAGON HEAD FLANGE | 2 | |
| 14 | 11184H3J000H000 | WASHER | 1 | |
| 15 | 09482H00010H000 | PLUG, SPARK | 1 | CPR8EA |
| 16 | 13110H40000H000 | PIPE COMP, INTAKE | 1 | |
| 17 | 09280H34002H000 | O-RING | 1 | |
| 18 | 01547-0620A-000 | BOLT | 2 | |
| 19 | 13112H3J010H000 | PLATE, CARB HEAT GUARD | 1 | |
| 20 | 13113H3E001H000 | GASKET, CARB HEAT GUARD PL | 1 | |
| 21 | 09108H06009H000 | STUD BOLT | 2 | |
| 22 | 08310-0006A-000 | NUT | 2 | |

2

Fig. 2

Fig.2 CYLINDER (P12-S020-0005)

| REF. No. | PART No. | DESCRIPTION | Q' TY | REMARKS |
|----------|-----------------|------------------|-------|---------|
| 1 | 11210H3JOB0H0A0 | CYLINDER COMP | 1 | |
| 2 | 11241H3J010H000 | GASKET, CYLINDER | 1 | |
| 3 | 09206H10007H000 | PIN, KNOCK | 2 | |
| 4 | 09108H08021H000 | BOLT, STUD | 4 | |



2



Fig. 3

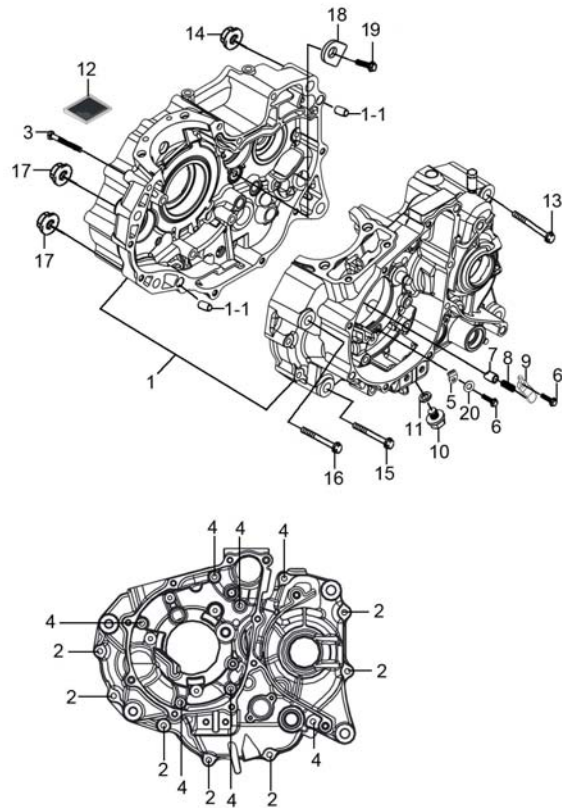


Fig.3 CRANKCASE (P12-S030-0008)

| REF. No. | PART No. | DESCRIPTION | Q'TY | REMARKS |
|----------|-----------------|--------------------------------|------|---------|
| 1 | 11300H3JY71H000 | CRANKCASE SET | 1 | |
| 1-1 | 09206H10007H000 | PIN, KNOCK | 2 | |
| 2 | 01547-0640A-000 | BOLTS, HEXAGON HEAD FLANGE | 7 | |
| 3 | 01547-0645A-000 | BOLT | 1 | |
| 4 | 01547-0670A-000 | BOLTS, HEXAGON HEAD FLANGE | 7 | |
| 5 | 12547H3J000H000 | RETA INER, CSHAFT BRG, L | 3 | |
| 6 | 01547-0616A-000 | BOLT | 4 | |
| 7 | 12543H3J000H000 | PIN, BRG PUSH | 1 | |
| 8 | 12544H3J000H000 | SPRING, BRG PUSH | 1 | |
| 9 | 12545H3J010H000 | PLATE, BRG PUSH PIN SPRING | 1 | |
| 10 | 09247H12105H000 | PLUG | 1 | |
| 11 | 09168-12002-000 | GASKET, TDC PLUG | 1 | |
| 12 | 16520-09410-000 | STRAINER COMP, ENGINE OIL | 1 | |
| 13 | 09103H10003H000 | BOLT, HEXAGON | 2 | |
| 14 | 08319-3110A-000 | NUT | 2 | |
| 15 | 09103-08530-000 | BOLT | 1 | |
| 16 | 09103H08010H000 | BOLT, HEXAGON | 1 | |
| 17 | 08319-3108A-000 | NUT | 2 | |
| 18 | 24741H3J000H000 | RETA INER, CNTR SHAFT BEARING | 2 | |
| 19 | 01550-0616A-000 | BOLT | 2 | |
| 20 | 08211-06141-000 | WASHER, GEAR SHIFT CAM STOPPER | 3 | |

2



Fig. 4

2

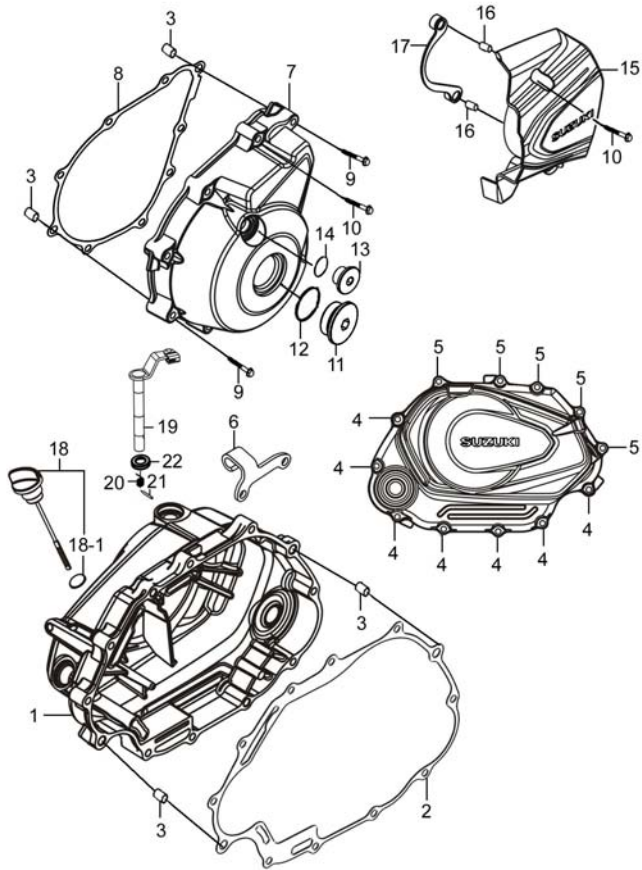


Fig.4 CRANKCASE COVER (P12-S040-0005)

| REF. No. | PART No. | DESCRIPTION | Q' TY | REMARKS |
|----------|-----------------|-------------------------------|-------|---------|
| 1 | 11340H40000H000 | COVER COMP, CLUTCH | 1 | |
| 2 | 11482H3J012H000 | GASKET, CLUTCH COVER | 1 | |
| 3 | 09206H08004H000 | PIN, KNOCK | 4 | |
| 4 | 01547-0640A-000 | BOLTS, HEXAGON HEAD FLANGE | 7 | |
| 5 | 01547-0630A-000 | BOLT | 5 | |
| 6 | 11421H3R000H000 | BRACKET, CLUTCH CABLE | 1 | |
| 7 | 11351H3J010H000 | COVER, MAGNETO | 1 | |
| 8 | 11483H3J011H000 | GASKET, MAGNETO COVER | 1 | |
| 9 | 01547-0645A-000 | BOLT | 2 | |
| 10 | 01547-0635A-000 | BOLT | 9 | |
| 11 | 09259H32002H000 | PLUG | 1 | |
| 12 | 09280-32006-000 | O-RING, INTAKE PIPE | 1 | |
| 13 | 11353H3J010H000 | PLUG, TIMING OBSERVATION HOLE | 1 | |
| 14 | 09280H13010H000 | O-RING | 1 | |
| 15 | 11361H40000H000 | COVER, ENG SPROCKET | 1 | |
| 16 | 09206H08002H000 | PIN, KNOCK | 2 | |
| 17 | 11362H3J010H000 | PLATE, CHAIN | 1 | |
| 18 | 11091H3J010H000 | GAUGE SET, OIL LEVEL | 1 | |
| 18-1 | 09280H18002H000 | O RING | 1 | |
| 19 | 23270H3J010H000 | SHAFT COMP, CLUTCH RELEASE | 1 | |
| 20 | 09448H15001H000 | SPRING, TORSION | 1 | |
| 21 | 09205H03001H000 | PIN, SPRING | 1 | |
| 22 | 23285H35010H000 | SEAL, OIL | 1 | |

Fig. 5

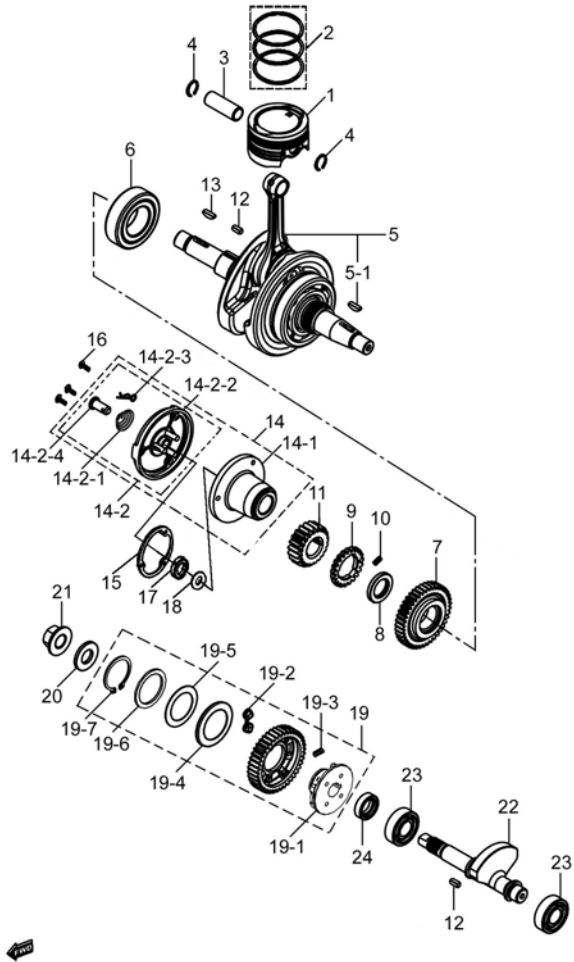


Fig.5 CRANKSHAFT (P12-S050-0012)

| REF. No. | PART No. | DESCRIPTION | Q'TY | REMARKS |
|----------|-----------------|-------------------------------|------|---------|
| 1 | 12111H3J020H0A0 | PISTON | 1 | |
| 2 | 12140H3E010H000 | RING SET, PISTON | 1 | |
| 3 | 12151H3J000H000 | PIN, PISTON | 1 | |
| 4 | 09381-14001-000 | CIRCLIP | 2 | |
| 5 | 12200H3J031H000 | CRANKSHAFT ASSY | 1 | |
| 5-1 | 09420H04002H000 | KEY | 1 | |
| 6 | 09264H30001H000 | BEARING, ROLLER | 1 | |
| 7 | 12661H3J001H000 | GEAR, CRANK BALANCER DRIVE | 1 | |
| 8 | 21113H3J000H000 | WASHER, PRIMARY DRIVE GEAR | 1 | |
| 9 | 21112H3J010H000 | GEAR, PRIMARY DRIVE NO. 2 | 1 | |
| 10 | 21114H3J010H000 | SPRING, PRIMARY DRIVE GEAR | 3 | |
| 11 | 21111H3J020H000 | GEAR, PRIMARY DRIVE | 1 | |
| 12 | 09421H04001H000 | KEY | 2 | |
| 13 | 09420H04005H000 | KEY, WOODRUFF | 1 | |
| 14 | 16052H3D010H000 | FILTER SET, ENGINE OIL | 1 | |
| 14-1 | 16514H3D000H000 | BODY, ENGINE OIL FILTER | 1 | |
| 14-2 | 16520H33040H000 | COVER ASSY, ENGINE OIL FILTER | 1 | |
| 14-2-1 | 16532H33040H000 | SPRING, OIL PASSING TUBE | 1 | |
| 14-2-2 | 16521H33040H000 | COVER, ENGINE OIL FILTER | 1 | |
| 14-2-3 | 16551H33040H000 | PIN, COTTER | 1 | |
| 14-2-4 | 16531H33040H000 | TUBE, OIL PASSING | 1 | |
| 15 | 16561H3E000H000 | GASKET, ROTOR COVER | 1 | |
| 16 | 02122-0512A-000 | CROSS RECESSED HEAD SCREW | 3 | |
| 17 | 21346H33000H000 | NUT, LOCK | 1 | |
| 18 | 09160H16004H000 | WASHER, PLAIN | 1 | |
| 19 | 12670H3J000H000 | GEAR COMP, CRANK BAL DRIVEN | 1 | |
| 19-1 | 12679H3J000H000 | RACE, CRK BAL DRIVEN GEAR | 1 | |
| 19-2 | 12686H3J000H000 | DAMPER, CRANK BALANCER GEAR | 2 | |
| 19-3 | 09440H07004H000 | SPRING, COMPRESSION | 2 | |

2

Fig. 5

2

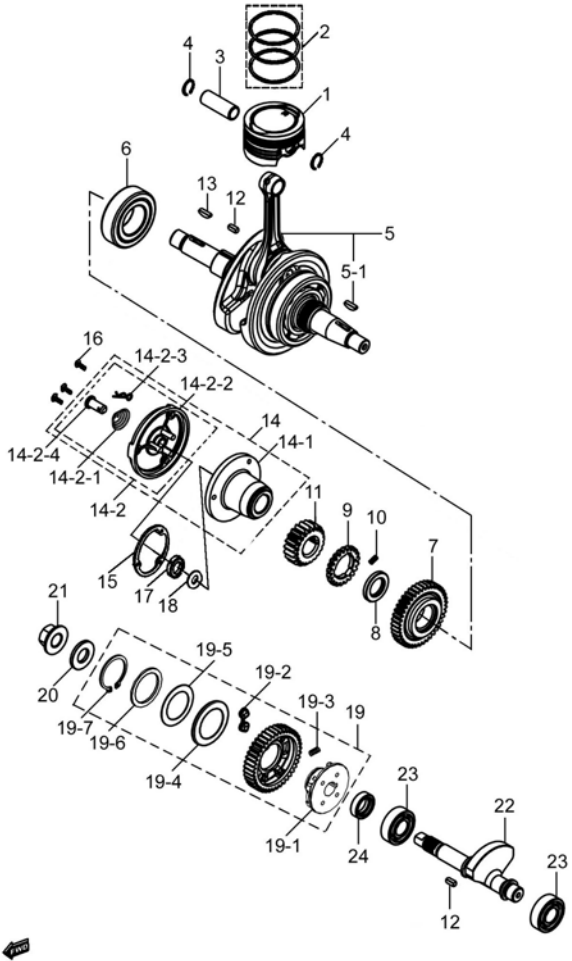


Fig.5 CRANKSHAFT (P12-S050-0012)

| REF. No. | PART No. | DESCRIPTION | Q' TY | REMARKS |
|----------|-----------------|------------------|-------|---------|
| 19-4 | 09181H28001H000 | WASHER, THRUST | 1 | |
| 19-5 | 12687H3J000H000 | DISC SPRING | 1 | |
| 19-6 | 09181H28004H000 | WASHER | 1 | |
| 19-7 | 08331-31289-000 | CIRCLIP | 1 | |
| 20 | 21324H3J000H000 | WASHER | 1 | |
| 21 | 09159H14001H000 | NUT, WITH FLANGE | 1 | |
| 22 | 12651H3J020H000 | BALANCER, CRANK | 1 | |
| 23 | 09262H15018H000 | BEARING | 2 | |
| 24 | 09180H15019H000 | SPACER | 1 | |

Fig. 6

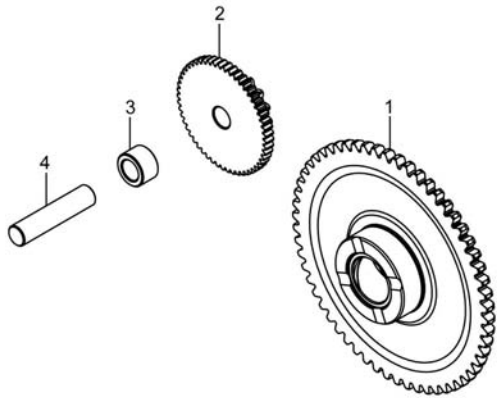


Fig.6 STARTER CLUTCH (P12-S060-0001)

| REF. No. | PART No. | DESCRIPTION | Q' TY | REMARKS |
|----------|-----------------|---------------------------|-------|---------|
| 1 | 12620H3J000H000 | GEAR COMP, STARTER CLUTCH | 1 | |
| 2 | 12611H3J000H000 | GEAR, STARTER IDLE | 1 | |
| 3 | 09180H10002H000 | SPACER | 1 | |
| 4 | 12683H36000H000 | SHAFT, GEAR 1ST | 1 | |

2

Fig. 7

2

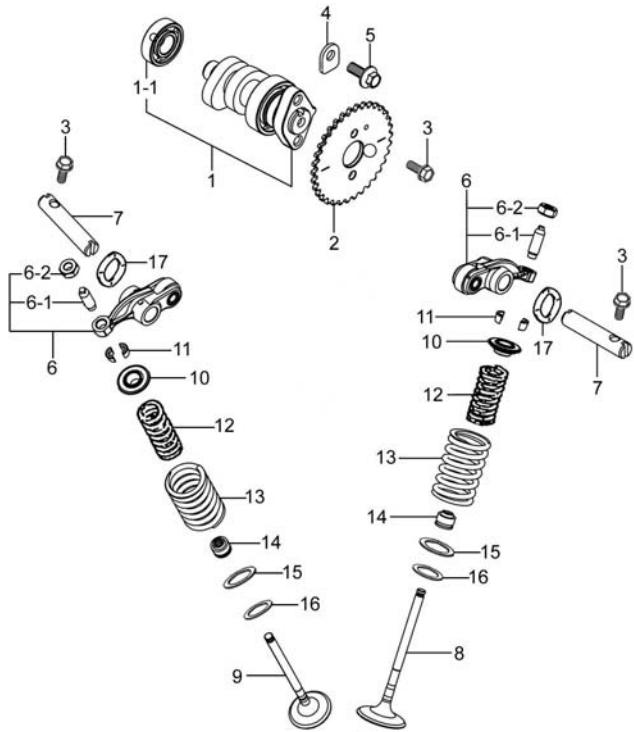


Fig.7 CAMSHAFT-VALVE (P12-S070-0005)

| REF. No. | PART No. | DESCRIPTION | Q' TY | REMARKS |
|----------|-----------------|----------------------------|-------|---------|
| 1 | 12710H3J053H000 | CAMSHAFT COMP | 1 | |
| 1-1 | 09262H12014H000 | BEARING | 1 | RH |
| 2 | 12741H3J000H000 | SPROCKET, CAMSHAFT | 1 | |
| 3 | 09103H05001H000 | BOLT | 4 | |
| 4 | 24741-20A10-000 | RETAINER, CAMSHAFT COMP | 1 | |
| 5 | 01547-0614A-000 | BOLTS, HEXAGON HEAD FLANGE | 1 | |
| 6 | 12840H3J001H000 | ARM COMP, VALVE ROCKER | 2 | |
| 6-1 | 12842H3J000H000 | SCREW, TAPPET ADJUSTING | 1 | |
| 6-2 | 12852H33000H000 | NUT | 1 | |
| 7 | 12861H3J000H000 | SHAFT, VALVE ROCKER ARM | 2 | |
| 8 | 12911H3J010H000 | VALVE, INTAKE | 1 | |
| 9 | 12912H3J030H000 | VALVE, EXHAUST | 1 | |
| 10 | 12931H3R000H000 | RETAINER VALVE SPRING | 2 | |
| 11 | 12932H50100H000 | COTTER VALVE | 4 | |
| 12 | 12921H3R000H000 | SPRING, VALVE INNER | 2 | |
| 13 | 12922H3R000H000 | SPRING, VALVE OUTER | 2 | |
| 14 | 09289H05004H000 | SEAL, OIL | 2 | |
| 15 | 09181H16001H000 | SEAT VALVE SPRING | 2 | |
| 16 | 09160H12021H000 | WASHER, PLAIN | 2 | |
| 17 | 09164H10001H000 | WASHER, WAVE | 2 | |

Fig. 8

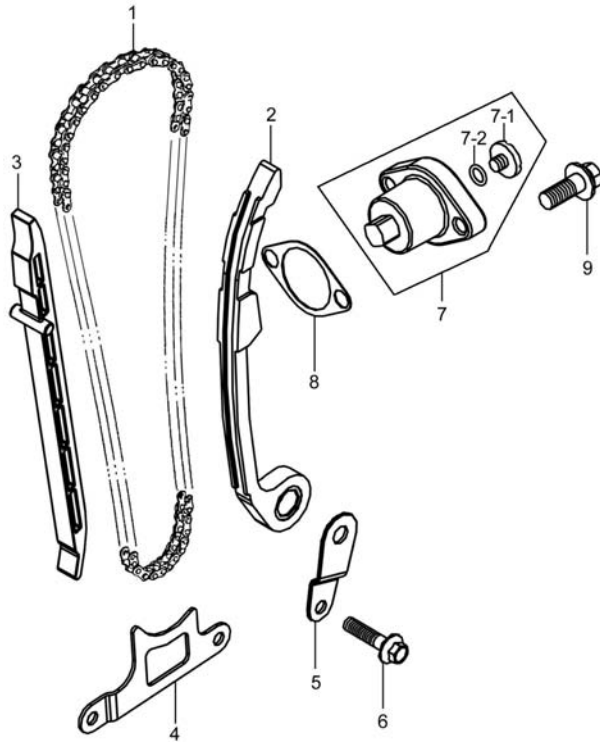


Fig.8 CAM CHAIN (P12-S080-0002)

| REF. No. | PART No. | DESCRIPTION | Q'TY | REMARKS |
|----------|-----------------|----------------------------|------|---------|
| 1 | 12760H3J010H000 | CHAIN COMP, CAMSHAFT DRIVE | 1 | |
| 2 | 12811H3J010H000 | TENSIONER, CAM CHAIN | 1 | |
| 3 | 12771H3J000H000 | GUIDE, CAM CHAIN | 1 | |
| 4 | 11327H3J010H000 | STOPPER, CHAIN | 1 | |
| 5 | 11327H3J000H000 | PLATE | 1 | |
| 6 | 01547-0625A-000 | BOLT | 1 | |
| 7 | 12830H3JY01H000 | ADJUSTER SET, TENSIONER | 1 | |
| 7-1 | 09125H06002H000 | SCREW | 1 | |
| 7-2 | 09280H09011H000 | O-RING | 1 | |
| 8 | 12837H21D20H000 | GASKET, TENSIONER ADJUSTER | 1 | |
| 9 | 01547-0620A-000 | BOLT | 2 | |

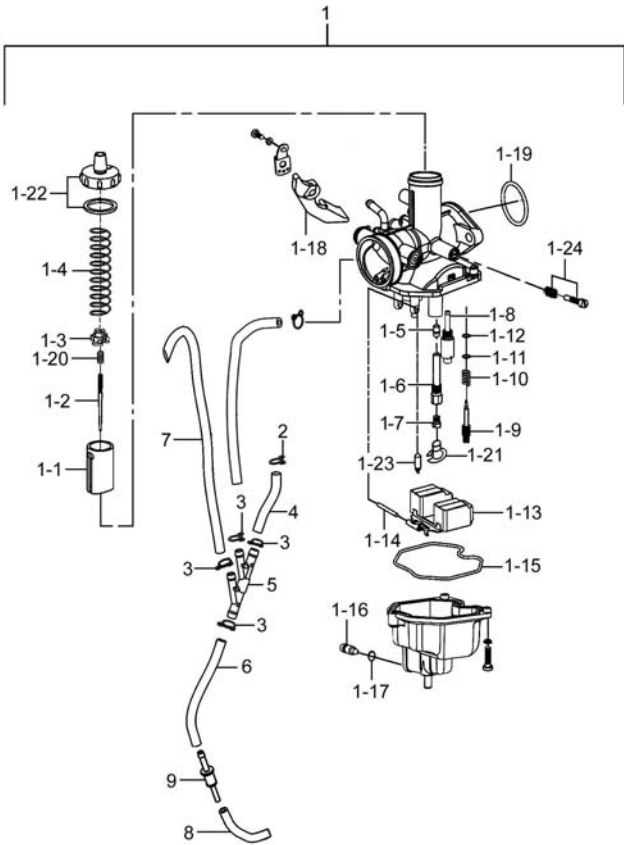
2



Fig. 9

Fig.9 CARBURETOR (P12-S090-0002)

2



| REF. No. | PART No. | DESCRIPTION | Q' TY | REMARKS |
|----------|-----------------|--------------------|-------|---------|
| 1 | 13200H40020H000 | CARBURETOR ASSY | 1 | |
| 1-1 | 13551H40010H000 | VALVE, PISTON | 1 | |
| 1-2 | 13383H40020H000 | JET NEEDLE | 1 | |
| 1-3 | 13389H12600H000 | CAP, JET NEEDLE | 1 | |
| 1-4 | 13573H12600H000 | COMPRESSION SPRING | 1 | |
| 1-5 | 13241H12600H000 | NEEDLE JET | 1 | |
| 1-6 | 13385H12600H000 | JET HOLDER | 1 | |
| 1-7 | 09491H21040H000 | MAIN JET | 1 | |
| 1-8 | 09492H38040H000 | PILOT JET | 1 | |
| 1-9 | 13279H40010H000 | ADJUSTER | 1 | |
| 1-10 | 13268H12600H000 | COMPRESSION SPRING | 1 | |
| 1-11 | 13382H12600H000 | WASHER | 1 | |
| 1-12 | 13295H12600H000 | O-RING | 1 | |
| 1-13 | 13250H12600H000 | FLOAT ASSY | 1 | |
| 1-14 | 13254H12600H000 | FLOAT PIN | 1 | |
| 1-15 | 13251H12600H000 | GASKET | 1 | |
| 1-16 | 13247H12600H000 | SCREW, DRAIN | 1 | |
| 1-17 | 13389H12610H000 | O-RING, DRAIN | 1 | |
| 1-18 | 13413H40010H000 | LEVER ASSY | 1 | |
| 1-19 | 13253H12600H000 | O-RING | 1 | |
| 1-20 | 13388H12600H000 | COMPRESSION SPRING | 1 | |
| 1-21 | 13346H40010H000 | CAP, MAIN JET | 1 | |
| 1-22 | 13261H12600H000 | MIXING CAP | 1 | |
| 1-23 | 13370H40010H000 | NEEDLE VALVE ASSY | 1 | |
| 1-24 | 13267H40010H000 | ADJUSTER | 1 | |
| 2 | 09401-08414-000 | CLIP | 1 | |
| 3 | 09401-10410-000 | CLIP, VACUUM HOSE | 4 | |
| 4 | 13683H12601H000 | HOSE, DRAIN | 1 | |
| 5 | 13286H40010H000 | 4-WAY PIPE | 1 | |

Fig.9

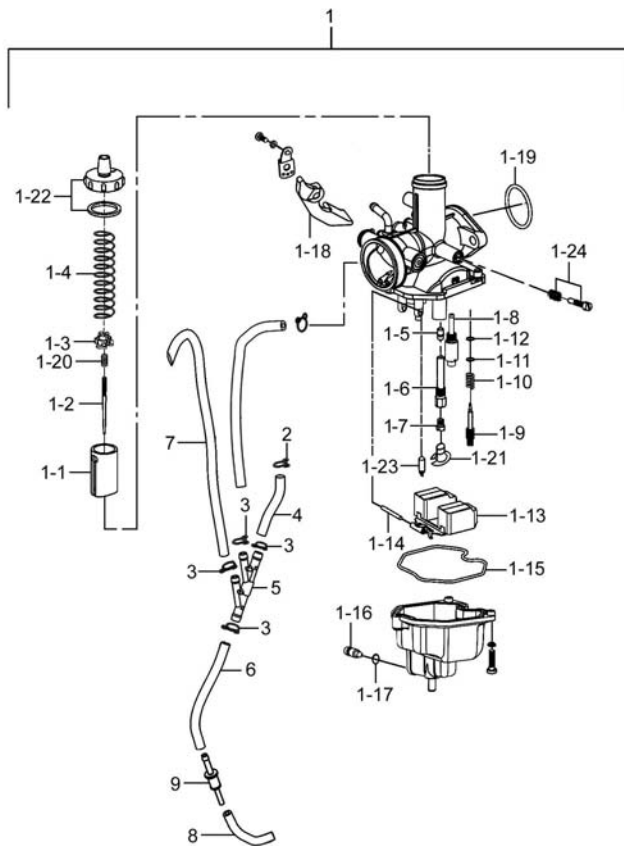


Fig.9 CARBURETOR (P12-S090-0002)

| REF. No. | PART No. | DESCRIPTION | Q' TY | REMARKS |
|----------|-----------------|---------------------|-------|---------|
| 6 | 13687H40020H000 | HOSE, OVERFLOW | 1 | |
| 7 | 13688H12601H000 | HOSE, BREATHER | 1 | |
| 8 | 13684H40010H000 | HOSE, CARB OVERFLOW | 1 | |
| 9 | 09367H08001H000 | JOINT, HOSE | 1 | |

2



Fig. 10

2

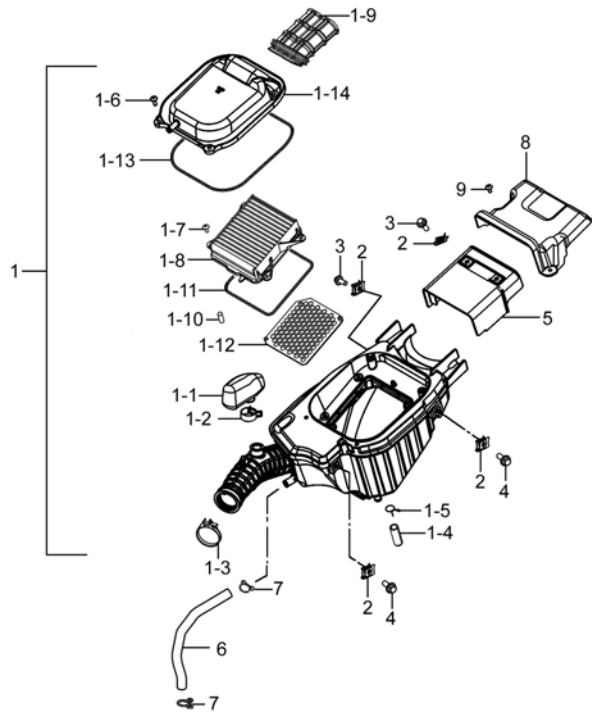


Fig.10 AIR CLEANER (P12-S100-0005)

| REF. No. | PART No. | DESCRIPTION | Q' TY | REMARKS |
|----------|-----------------|-----------------------------------|-------|---------|
| 1 | 13700H40000H000 | CLEANER ASSY, AIR | 1 | |
| 1-1 | 13886H40000H000 | HELMHOLTZ RESONATOR | 1 | |
| 1-2 | 09401H21401H000 | CLIP | 1 | |
| 1-3 | 13170H2C002H000 | CLAMP, OUTLET TUBE | 1 | |
| 1-4 | 13878H52100H000 | TUBE, DRAIN | 1 | |
| 1-5 | 09401H14302H000 | CLIP | 1 | |
| 1-6 | 02142-0516A-000 | CROSS RECESSED HEAD SCREW | 4 | |
| 1-7 | 02142-0512A-000 | CROSS RECESSED HEAD SCREW | 4 | |
| 1-8 | 13781H40100H000 | FILTER, AIR CLNR | 1 | |
| 1-9 | 13891H40000H000 | TUBE, INLET | 1 | |
| 1-10 | 13898H40100H000 | SPONGE, FILTER | 1 | |
| 1-11 | 13724H40100H000 | GASKET, FILTER | 1 | |
| 1-12 | 13810H40100H000 | TRAP COMP, FLAME | 1 | |
| 1-13 | 13723H40100H000 | GASKET, AIR CLNR CAP | 1 | |
| 1-14 | 13741H40000H000 | CAP, AIR CLNR | 1 | |
| 2 | 35157H22501H000 | NUT | 6 | |
| 3 | 01550-0616A-000 | BOLT | 4 | |
| 4 | 09111-06061-000 | SCREW, FRONT FENDER | 2 | |
| 5 | 13787H40100H000 | GUARD, WATER | 1 | |
| 6 | 13851H40100H000 | TUBE, BREATHER | 1 | |
| 7 | 09401H15202H000 | CLIP | 2 | |
| 8 | 13766H40100H000 | COVER, WATER PROOF, NO. 2 | 1 | |
| 9 | 03541-0516A-000 | CROSS RECESSED HEAD TAPPING SCREW | 2 | |

Fig. 11

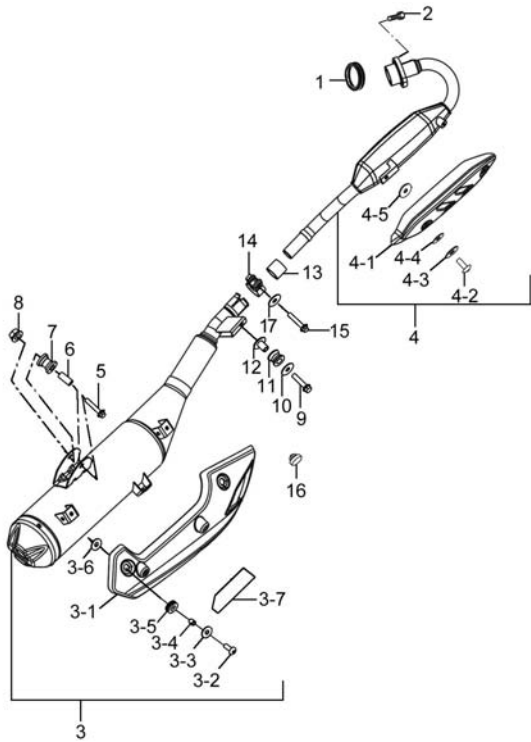


Fig.11 MUFFLER (P12-S110-0005)

| REF. No. | PART No. | DESCRIPTION | Q'TY | REMARKS |
|----------|-----------------|--------------------------------|------|---------|
| 1 | 14181H11200H000 | GASKET, EXH PIPE | 1 | |
| 2 | 07130-0825A-000 | BOLT | 2 | |
| 3 | 14031H40010H000 | BODY SET, MUF | 1 | |
| 3-1 | 14791H40100H000 | COVER, MUF BODY | 1 | |
| 3-2 | 09139H06006H000 | SCREW | 3 | |
| 3-3 | 09160-06164-000 | WASHER, PLAIN | 3 | |
| 3-4 | 09180H06336H000 | SPACER | 3 | |
| 3-5 | 09320H10023H000 | CUSHION | 3 | |
| 3-6 | 09168H06002H000 | GASKET | 3 | |
| 3-7 | 14793H40100H000 | HEAT-SHIELDED FLAKE, MUF COVER | 1 | |
| 4 | 14015H40001H000 | PIPE SET, EXHAUST | 1 | |
| 4-1 | 14781H40100H000 | COVER, MUF, FR | 1 | |
| 4-2 | 09139-06027-000 | BOLT | 2 | |
| 4-3 | 09160-06163-000 | WASHER, PLAIN | 2 | |
| 4-4 | 09161H06004H000 | WASHER | 2 | |
| 4-5 | 09168H06002H000 | GASKET | 2 | |
| 5 | 01550-0845A-000 | BOLT | 1 | |
| 6 | 14412H40100H000 | SPACER | 1 | |
| 7 | 14414H40100H000 | CUSHION | 1 | |
| 8 | 08319-3108A-000 | NUT | 1 | |
| 9 | 01550-0830A-000 | BOLTS, HEXAGON HEAD FLANGE | 1 | |
| 10 | 09160H08017H000 | WASHER, PLAIN | 1 | |
| 11 | 09320H12005H000 | CUSHION | 1 | |
| 12 | 09180H08015H000 | SPACER | 1 | |
| 13 | 14771H40100H000 | CONNECTOR, MUF | 1 | |
| 14 | 14459H40100H000 | CLAMP, MUFFLER CONNECTOR | 1 | |
| 15 | 01550-0840A-000 | BOLTS, HEXAGON HEAD FLANGE | 1 | |
| 16 | 09321H09002H000 | CUSHION | 2 | |
| 17 | 09160H08008H000 | WASHER, PLAIN | 1 | |

2

Fig. 12

2

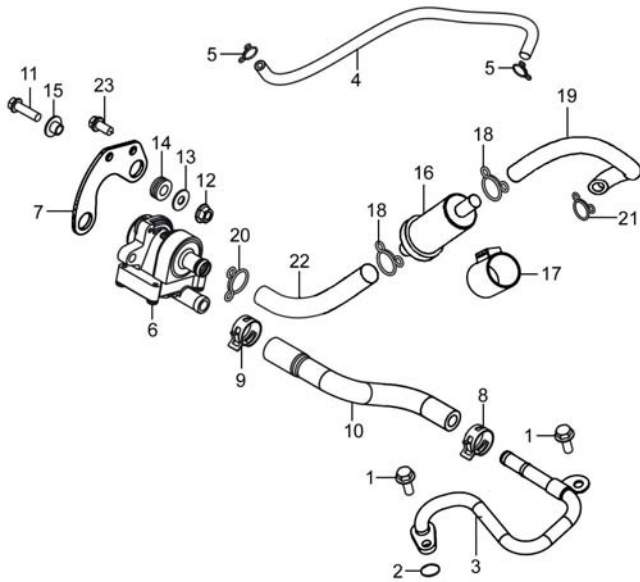


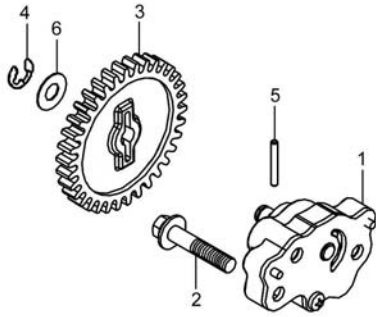
Fig.12 2ND AIR VAVLE (P12-S120-0002)

| REF. No. | PART No. | DESCRIPTION | Q' TY | REMARKS |
|----------|------------------|-----------------------------|-------|---------|
| 1 | 01547-0616A-000 | BOLT | 2 | |
| 2 | 09280H10002H000 | O-RING | 1 | |
| 3 | 18410H40000H000 | PIPE COMP, 2ND AIR | 1 | |
| 4 | 18463H40000H000 | HOSE, 2ND AIR VALVE VACUUM | 1 | |
| 5 | 09401H07201H000 | CLIP | 2 | |
| 6 | 18450H2G1110H000 | VALVE ASSY, 2ND AIR | 1 | |
| 7 | 18610H40000H000 | BRACKET COMP, 2ND AIR VALVE | 1 | |
| 8 | 09401-15404-000 | CLIP, FUEL HOSE | 1 | |
| 9 | 09401-17401-000 | CLIP | 1 | |
| 10 | 18461H40000H000 | HOSE, 2ND AIR VALVE | 1 | |
| 11 | 01547-0625A-000 | BOLT | 2 | |
| 12 | 08316-1006A-000 | NUT | 2 | |
| 13 | 09160-06006-000 | WASHER | 2 | |
| 14 | 09320-08051-000 | CUSHION, MUF COVER | 2 | |
| 15 | 09180H06034H000 | SPACER | 2 | |
| 16 | 44330H12900H000 | CLEANER COMP, AIR | 1 | |
| 17 | 18715H40000H000 | RUBBER, 2ND AIR CLNR | 1 | |
| 18 | 09401H13002H000 | CLIP | 2 | |
| 19 | 18712H40000H000 | HOSE, 2ND AIR CLNR | 1 | |
| 20 | 09401H15202H000 | CLIP | 1 | |
| 21 | 09401H12302H000 | CLIP | 1 | |
| 22 | 18711H40000H000 | HOSE, 2ND AIR CLNR | 1 | |
| 23 | 01547-0612A-000 | HEXAGON BOLT WITH FLANGE | 2 | |

Fig. 13

Fig.13 OIL PUMP (P12-S130-0003)

| REF. No. | PART No. | DESCRIPTION | Q'TY | REMARKS |
|----------|-----------------|----------------------------|------|---------|
| 1 | 16400H3J000H000 | PUMP ASSY, ENG OIL | 1 | |
| 2 | 01547-0630A-000 | BOLT | 2 | |
| 3 | 16330H3J021H000 | GEAR COMP, OIL PUMP DRIVEN | 1 | |
| 4 | 09383-05001-000 | E-RING | 1 | |
| 5 | 09261-02001-000 | PIN, OIL PUMP DRIVEN GEAR | 1 | |
| 6 | 16422-20E00-000 | WASHER, OIL PUMP DRIVEN | 1 | |



2



Fig. 14

2

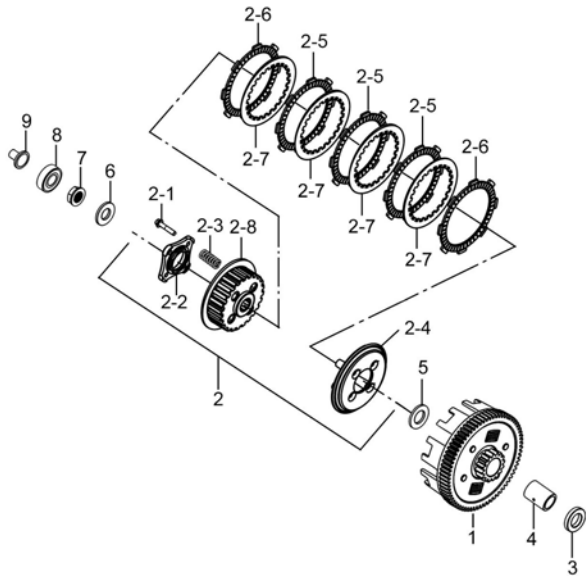


Fig.14 CLUTCH (P12-S140-0004)

| REF. No. | PART No. | DESCRIPTION | Q' TY | REMARKS |
|----------|-----------------|-----------------------------|-------|---------|
| 1 | 21200H3J040H000 | GEAR ASSY, PRIMARY DRIVEN | 1 | |
| 2 | 21410H3J030H000 | HUB ASSY, CLUTCH SLEEVE | 1 | |
| 2-1 | 01550-0622A-000 | BOLT, HEXAGON HEAD FLANGE | 4 | |
| 2-2 | 21471H3G000H000 | PLATE, CLUTCH PUSH ROD | 1 | |
| 2-3 | 21413H3D010H000 | SPRING, CLUTCH | 4 | |
| 2-4 | 21462H3E000H000 | DISC, CLUTCH PRESSURE | 1 | |
| 2-5 | 21441H36030H000 | PLATE, CLUTCH DRIVE | 3 | |
| 2-6 | 21441H3J000H000 | PLATE, CLUTCH DRIVE | 2 | |
| 2-7 | 21451H3E010H000 | PLATE, CLUTCH DRIVEN | 4 | |
| 2-8 | 21411H3G000H000 | HUB, CLUTCH SLEEVE | 1 | |
| 3 | 09180H17005H000 | SPACER | 1 | |
| 4 | 21251H3J000H000 | SPACER, PRIMARY DRIVEN GEAR | 1 | |
| 5 | 21481H3J000H000 | WASHER, CLUTCH SLEEVE HUB | 1 | |
| 6 | 21324H3J000H000 | WASHER | 1 | |
| 7 | 21346H3J000H000 | NUT, LOCK | 1 | |
| 8 | 09262H17001H000 | BEARING, CLUTCH | 1 | |
| 9 | 23131H3J010H000 | POLE, CLUTCH PUSH | 1 | |

Fig. 15

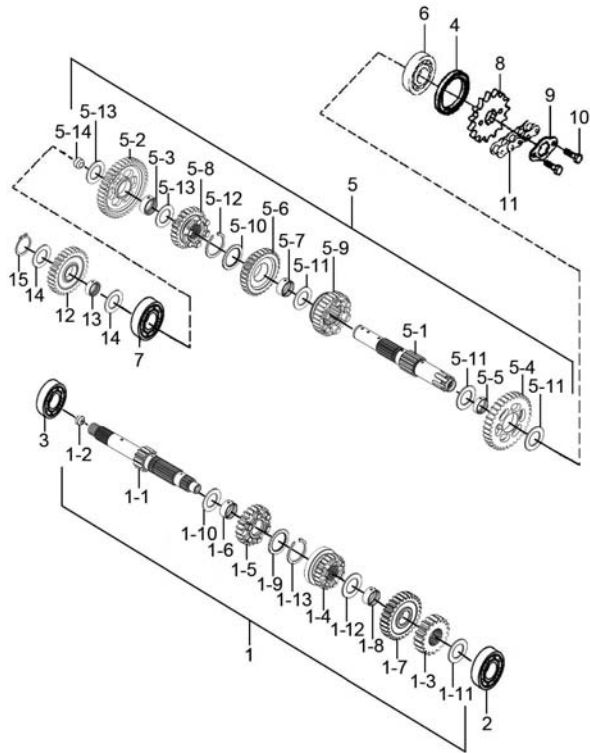


Fig.15 TRANSMISSION (P12-S150-0011)

| REF. No. | PART No. | DESCRIPTION | Q'TY | REMARKS |
|----------|-----------------|------------------------|------|---------|
| 1 | 24102H3J040H000 | SHAFT ASSY, COUNTER | 1 | |
| 1-1 | 24121H3J000H000 | SHAFT, COUNTER | 1 | |
| 1-2 | 24125H3J000H000 | NOZZLE, CNTR SHAFT OIL | 1 | |
| 1-3 | 24221H3J010H000 | GEAR, 2ND DRIVE | 1 | |
| 1-4 | 24231H3J010H000 | GEAR, 3RD DRIVE | 1 | |
| 1-5 | 24241H3J020H000 | GEAR, 4TH DRIVE | 1 | |
| 1-6 | 24242H3J000H000 | BUSH, 4TH DRIVE GEAR | 1 | |
| 1-7 | 24251H3J020H000 | GEAR, 5TH DRIVE | 1 | |
| 1-8 | 24252H3J000H000 | BUSH, 5TH DRIVE GEAR | 1 | |
| 1-9 | 24232H3J000H000 | WASHER, SPLINE | 1 | |
| 1-10 | 09160H20001H000 | WASHER, PLAIN | 1 | |
| 1-11 | 09160H12014H000 | WASHER, PLAIN | 1 | |
| 1-12 | 09160H17002H000 | WASHER, PLAIN | 1 | |
| 1-13 | 09380H18002H000 | CIRCLIP | 1 | |
| 2 | 09262H12009H000 | BEARING | 1 | |
| 3 | 09262H17017H000 | BEARING | 1 | |
| 4 | 09283H20013H000 | SEAL, OIL | 1 | |
| 5 | 24103H3J030H000 | SHAFT ASSY, DRIVE | 1 | |
| 5-1 | 24131H3R000H000 | SHAFT, DRIVE | 1 | |
| 5-2 | 24311H3J000H000 | GEAR, 1ST DRIVEN | 1 | |
| 5-3 | 24312H3J000H000 | BUSH, 1ST DRIVEN GEAR | 1 | |
| 5-4 | 24321H3J010H000 | GEAR, 2ND DRIVEN | 1 | |
| 5-5 | 24322H3J000H000 | BUSH, 2ND DRIVEN GEAR | 1 | |
| 5-6 | 24331H3J010H000 | GEAR, 3RD DRIVEN | 1 | |
| 5-7 | 24332H3J000H000 | BUSH, 3RD DRIVEN GEAR | 1 | |
| 5-8 | 24341H3J010H000 | GEAR, 4TH DRIVEN | 1 | |
| 5-9 | 24351H3J010H000 | GEAR, 5TH DRIVEN | 1 | |
| 5-10 | 24232H3J000H000 | WASHER, SPLINE | 1 | |
| 5-11 | 09160H20001H000 | WASHER, PLAIN | 3 | |

2



Fig. 15

2

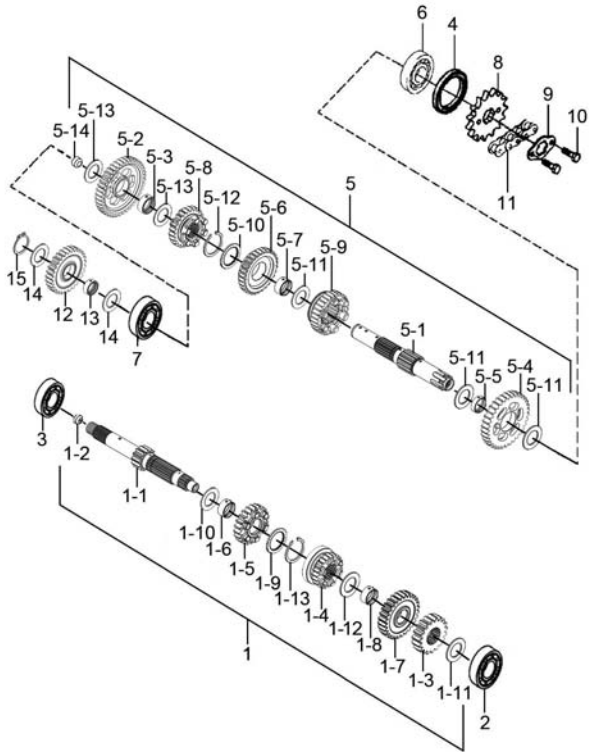
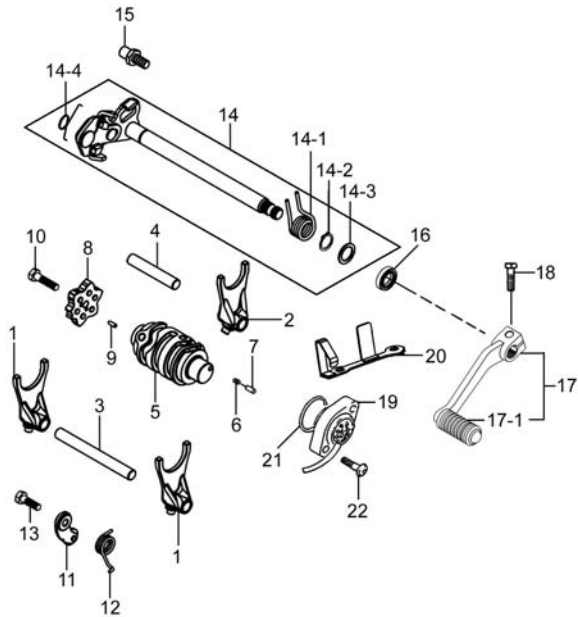


Fig.15 TRANSMISSION (P12-S150-0011)

| REF. No. | PART No. | DESCRIPTION | Q' TY | REMARKS |
|----------|-----------------|-------------------------------|-------|---------|
| 5-12 | 09380H18002H000 | CIRCLIP | 1 | |
| 5-13 | 09160H17002H000 | WASHER, PLAIN | 2 | |
| 5-14 | 09241H08001H000 | PLUG, OIL | 1 | |
| 6 | 09262H20014H000 | BEARING | 1 | |
| 7 | 09262H17007H000 | BEARING | 1 | |
| 8 | 27511H3J000H000 | SPROCKET, ENGINE | 1 | |
| 9 | 27521H33010H000 | WASHER | 1 | |
| 10 | 07130-0610A-000 | HEXAGON SOCKET HEAD CAP SCREW | 2 | |
| 11 | 27600H3R000H130 | CHAIN ASSY, DRIVE | 1 | |
| 12 | 26261H3J000H000 | GEAR, KICK STARTER IDLE | 1 | |
| 13 | 24312H3J000H000 | BUSH, 1ST DRIVEN GEAR | 1 | |
| 14 | 09160H17003H000 | WASHER | 2 | |
| 15 | 09380H16001H000 | RING, SNAP | 1 | |

Fig. 16

Fig.16 GEAR SHIFTING (P12-S160-0003)



| REF. No. | PART No. | DESCRIPTION | Q'TY | REMARKS |
|----------|-----------------|---------------------------------|------|---------|
| 1 | 25211H3J000H000 | FORK, GEAR SHIFT NO. 1 | 2 | |
| 2 | 25231H3J000H000 | FORK, GEAR SHIFT, MIDDLE | 1 | |
| 3 | 25411H3J000H000 | SHAFT, GEAR SHIFT FORK NO. 1 | 1 | |
| 4 | 25421H3J000H000 | SHAFT, GEAR SHIFT FORK, NO. 2 | 1 | |
| 5 | 25311H3J000H000 | CAM, GEAR SHIFT | 1 | |
| 6 | 09440H04030H000 | SPRING, COMPRESSION | 1 | |
| 7 | 25314H3E000H000 | PIN, CAM SHIFT | 1 | |
| 8 | 25380H3J000H000 | PLATE COMP, GEAR SHIFT CAM | 1 | |
| 9 | 25335H3J000H000 | PIN, GEAR SHIFT FIVE-STAR WHEEL | 2 | |
| 10 | 09100H06022H000 | BOLT, HEXAGON | 1 | |
| 11 | 25350H3J000H000 | STOPPER COMP, GEAR SHIFT CAM | 1 | |
| 12 | 25351H3J000H000 | SPRING, GEAR SHIFT CAM STOPPER | 1 | |
| 13 | 09100H06022H000 | BOLT, HEXAGON | 1 | |
| 14 | 25500H3J000H000 | SHAFT ASSY, GEAR SHIFT | 1 | |
| 14-1 | 25518H3J000H000 | SPRING, SHIFT SHAFT RETURN | 1 | |
| 14-2 | 08331-31149-000 | CIRCLIP, KICK SHAFT | 1 | |
| 14-3 | 09181H14004H000 | WASHER, THRUST | 1 | |
| 14-4 | 25515H3J000H000 | SPRING, GEAR SHIFT PLATE RETURN | 1 | |
| 15 | 25671H3J000H000 | STOPPER, GEAR SHIFT ARM | 1 | |
| 16 | 09283H14003H000 | SEAL, OIL | 1 | |
| 17 | 25600H40100H000 | LEVER ASSY, GEAR SHIFT | 1 | |
| 17-1 | 25652-20C00-000 | RUBBER, GEAR SHIFT PEDAL, FR | 1 | |
| 18 | 01500-0820A-000 | BOLT | 1 | |
| 19 | 37720H3J010H000 | BASE ASSY, GEAR SHIFT TERM | 1 | |
| 20 | 37725H3J000H000 | PLATE, GEAR SHIFT PRESSURE | 1 | |
| 21 | 09280H19001H000 | O-RING | 1 | |
| 22 | 02112-0418A-000 | CROSS RECESSED HEAD SCREW | 2 | |

2



Fig. 17

Fig.17 KICK STARTER (P12-S165-0002)

| REF. No. | PART No. | DESCRIPTION | Q' TY | REMARKS |
|----------|-----------------|---------------------------------|-------|---------|
| 1 | 26210H3J000H000 | SHAFT COMP, KICK STARTER | 1 | |
| 1-1 | 26211H3J000H000 | SHAFT, KICK STARTER | 1 | |
| 1-2 | 09160H14006H000 | WASHER, THRUST | 1 | |
| 1-3 | 26226H3J000H000 | SPRING, RELEASE | 1 | |
| 1-4 | 26251H3J000H000 | RATCHET WHEEL | 1 | |
| 1-5 | 09160H16001H000 | WASHER | 2 | |
| 1-6 | 26241H3J000H000 | GEAR, KICK STARTER DRIVE | 1 | |
| 1-7 | 09380H15002H000 | RING, SNAP | 1 | |
| 1-8 | 26212H3J000H000 | SPRING, KICK STARTER SHAFT | 1 | |
| 1-9 | 26221H3J000H000 | GUIDE, KICK STARTER SHAFT SPRIN | 1 | |
| 2 | 09283H16001H000 | SEAL, OIL | 1 | |
| 3 | 26256H3J000H000 | GUIDE, KICK STARTER | 1 | |
| 4 | 01550-0616A-000 | BOLT | 2 | |
| 5 | 26300H40100H000 | LEVER ASSY, KICK STARTER | 1 | |
| 5-1 | 26352-01000-000 | RUBBER, KICK STARTER LEVER | 1 | |
| 6 | 01500-0825A-000 | BOLTS, HEXAGON HEAD | 1 | |

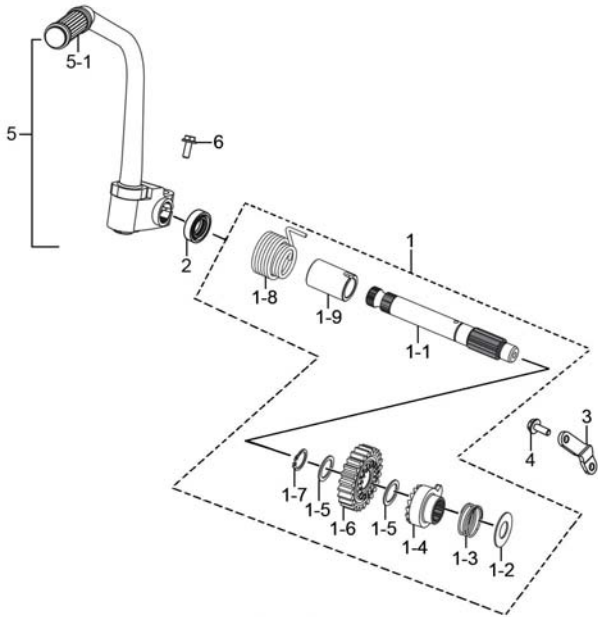


Fig. 18

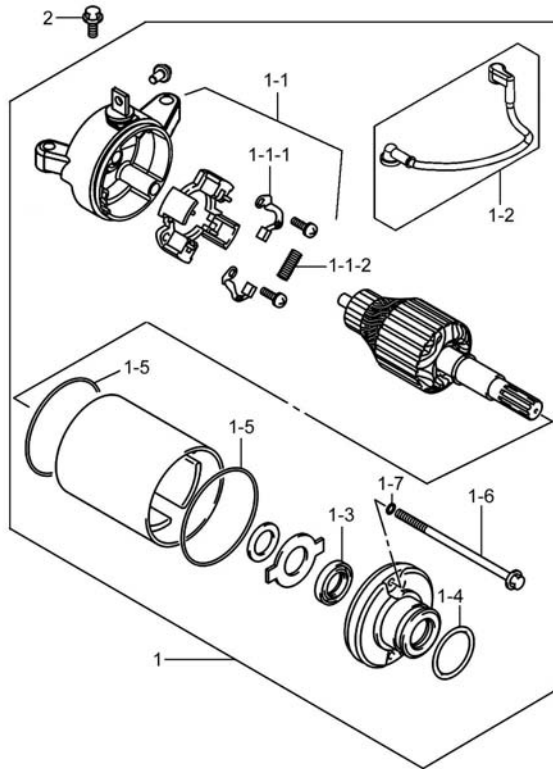


Fig.18 STARTING MOTOR (P12-S170-0003)

| REF. No. | PART No. | DESCRIPTION | Q' TY | REMARKS |
|----------|-----------------|-----------------------------|-------|---------|
| 1 | 31100H3J022H000 | MOTOR ASSY, STARTING | 1 | |
| 1-1 | 31175H3J001H000 | FRAME ASSY | 1 | |
| 1-1-1 | 31133H3J000H000 | BRUSH, STARTER MOTOR, MINUS | 2 | |
| 1-1-2 | 31135-05530-000 | SPRING | 4 | |
| 1-2 | 33810H3J020H000 | WIRE, STARTER MOTOR | 1 | |
| 1-3 | 31153H3J000H000 | OIL SEAL, STARTER MOTOR | 1 | |
| 1-4 | 09280-24003-000 | O RING (D:3, ID:24.5) | 1 | |
| 1-5 | 31264-05530-000 | O RING | 2 | |
| 1-6 | 31281H3J000H000 | BOLT | 2 | |
| 1-7 | 31156-05530-000 | O RING | 2 | |
| 2 | 01547-0630A-000 | BOLT | 2 | |

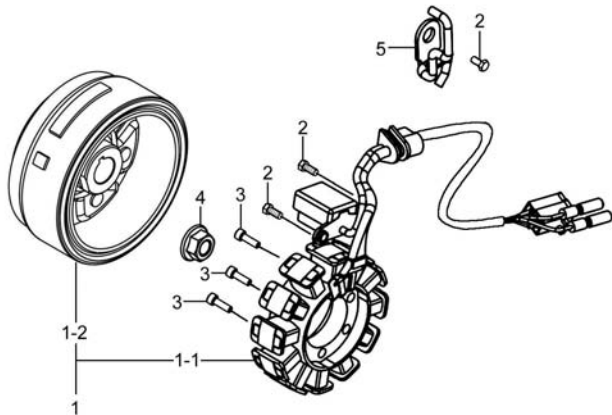
3



Fig. 19

Fig.19 MAGNETO (P12-S180-0002)

| REF. No. | PART No. | DESCRIPTION | Q' TY | REMARKS |
|----------|-----------------|----------------------|-------|---------|
| 1 | 32100H3J000H000 | MAGNETO ASSY | 1 | |
| 1-1 | 32101H3J000H000 | STATOR ASSY | 1 | |
| 1-2 | 32102H3J000H000 | ROTOR ASSY | 1 | |
| 2 | 09100H05005H000 | BOLT, HEXAGON | 3 | |
| 3 | 07130-0625A-000 | BOLT | 3 | |
| 4 | 08316-1014A-000 | NUT | 1 | |
| 5 | 32115H3J010H000 | PLATE, WIRE PRESSURE | 1 | |



3



Fig.20

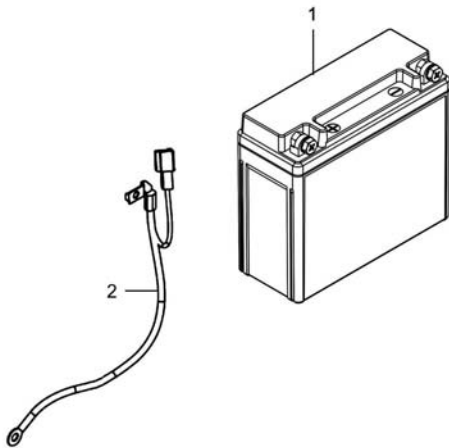


Fig.20 BATTERY (P12-S190-0011)

| REF.No. | PART No. | DESCRIPTION | Q'TY | REMARKS |
|---------|-----------------|----------------------------|------|------------------|
| 1 | 33630-15D01 | BATTERY ASSY | 1 | YTX7L-BS(12V6AH) |
| 1 | 33610C41K00H000 | BATTERY ASSY (AGMYTX7L BS) | 1 | OPTIONAL |
| 2 | 33860H40100H000 | WIRE,BATTERY MINUS LEAD | 1 | |

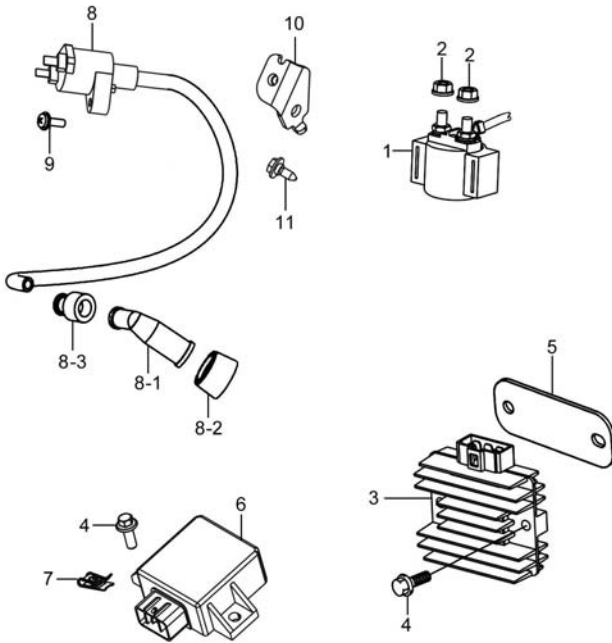
3



Fig. 21

Fig.21 ELECTRICAL (P12-S200-0005)

| REF. No. | PART No. | DESCRIPTION | Q' TY | REMARKS |
|----------|-----------------|----------------------------|-------|---------|
| 1 | 31800H73101H000 | RELAY ASSY, STARTING MOTOR | 1 | |
| 2 | 08361-3506A-000 | NUT | 2 | |
| 3 | 32800H51001H000 | RECTIFIER ASSY | 1 | |
| 4 | 01550-0616A-000 | BOLT | 4 | |
| 5 | 32831H40100H000 | BRACKET, RECT FTG | 1 | |
| 6 | 32900H40001H000 | CDI UNIT | 1 | |
| 7 | 35157H22501H000 | NUT | 2 | |
| 8 | 33410H40001H000 | COIL ASSY, IGNITION | 1 | |
| 8-1 | 33510H33811H000 | CAP ASSY, SPARK PLUG | 1 | |
| 8-2 | 33541H2M100H000 | SEAL, SPARK PLUG | 1 | |
| 8-3 | 33542H05500H000 | SEAL, HIGH TENSION CORD | 1 | |
| 9 | 02112-1520A-000 | CROSS RECESSED HEAD SCREW | 1 | |
| 10 | 33414H40000H000 | BRACKET, IGNITION COIL | 1 | |
| 11 | 09136H06003H000 | SCREW WITH WASHER | 1 | |



3



Fig. 22

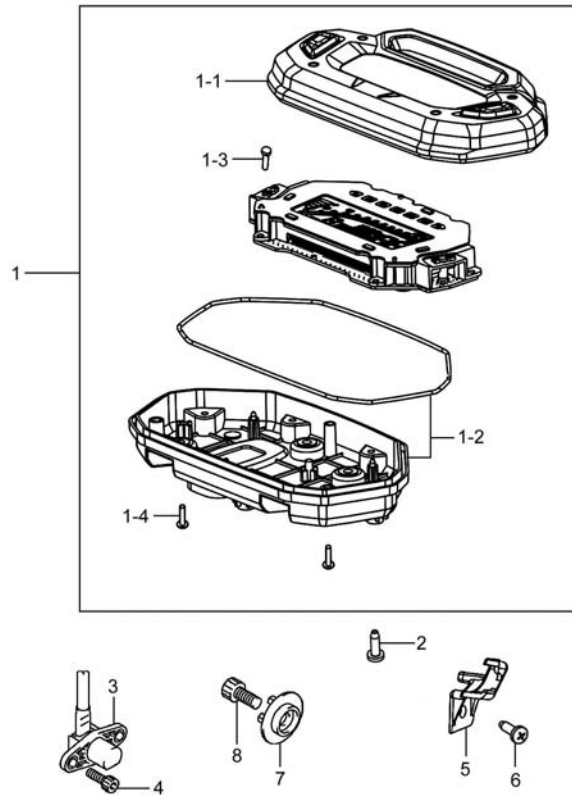


Fig.22 SPEEDOMETER (P12-S210-0005)

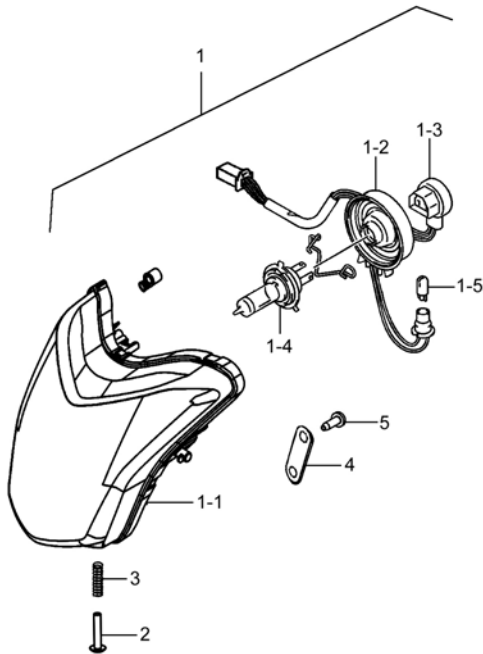
| REF. No. | PART No. | DESCRIPTION | Q' TY | REMARKS |
|----------|-----------------|-----------------------------------|-------|---------|
| 1 | 34100H40010H000 | SPEEDOMETER ASSY | 1 | |
| 1-1 | 34150H40010H000 | HOOD, SPEEDOMETER | 1 | |
| 1-2 | 34111H40010H000 | CASE, SPEEDOMETER, LOWER | 1 | |
| 1-3 | 34124H40010H000 | KNOB | 2 | |
| 1-4 | 03241-0314B-000 | CROSS RECESSED HEAD TAPPING SCREW | 8 | |
| 2 | 35151-21J00-000 | SCREW, HEADLAMP | 3 | |
| 3 | 34990H2A410H000 | SENSOR COMP, SPEED | 1 | |
| 4 | 07130-0512A-000 | HEXAGON SOCKET HEAD CAP SCREW | 2 | |
| 5 | 34997H40100H000 | CLAMP, SPEED SENSOR | 1 | |
| 6 | 03541-0516A-000 | CROSS RECESSED HEAD TAPPING SCREW | 1 | |
| 7 | 34981-26H00-000 | ROTOR, SPEED | 1 | |
| 8 | 07130-0825A-000 | BOLT | 1 | |

3

Fig. 23

Fig.23 HEADLAMP (P12-S220-0003)

| REF. No. | PART No. | DESCRIPTION | Q' TY | REMARKS |
|----------|-----------------|-----------------------------------|-------|----------------|
| 1 | 35100H40100H000 | HEADLAMP ASSY | 1 | |
| 1-1 | 35121H40100H000 | UNIT, HEADLAMP | 1 | |
| 1-2 | 35174H7J000H000 | BOOT, HEADLAMP HOUSING | 1 | |
| 1-3 | 35171H40100H000 | CORD, HEADLAMP | 1 | |
| 1-4 | 09471H12001H000 | BULB (12V, 35/35W) | 1 | HS1 12V 35/35W |
| 1-5 | 09471-12081-000 | BULB, POSITION LAMP | 1 | 12V W5W |
| 2 | 35151H40100H000 | SCREW, HEADLAMP | 1 | |
| 3 | 35154H40100H000 | SPRING, HEADLAMP ADJUST | 1 | |
| 4 | 35194H40100H000 | CLAMP, HEAD LAMP | 2 | |
| 5 | 03541-0412A-000 | CROSS RECESSED HEAD TAPPING SCREW | 4 | |



3

Fig. 24

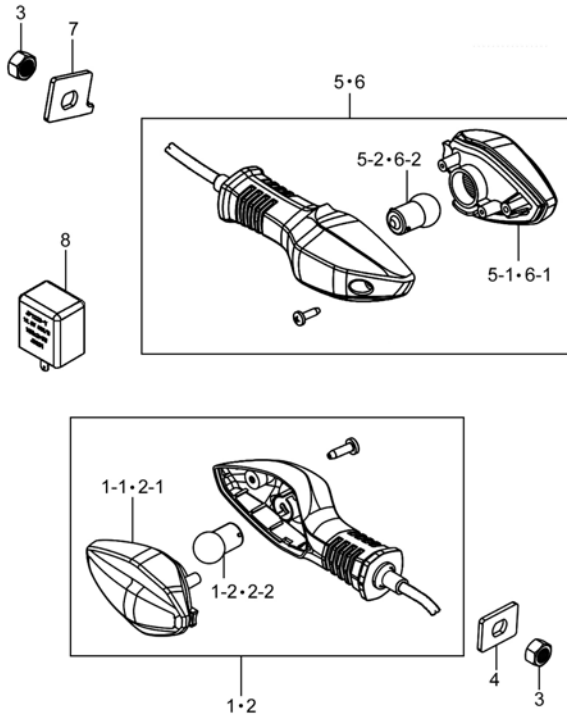


Fig.24 TURN SIGNAL LAMP (P12-S230-0006)

| REF. No. | PART No. | DESCRIPTION | Q'TY | REMARKS |
|----------|-----------------|--------------------------------|------|-----------|
| 1 | 35601H40100H000 | LAMP ASSY, FRONT TURNSIGNAL, R | 1 | |
| 1-1 | 35610H2C000H000 | UNIT, FRONT TURNSIGNAL, R | 1 | |
| 1-2 | 09471H12019H000 | BULB (12V, 10W) | 1 | 12V RY10W |
| 2 | 35602H40100H000 | LAMP ASSY, FRONT TURNSIGNAL, L | 1 | |
| 2-1 | 35630H2C000H000 | UNIT, FRONT TURNSIGNAL, L | 1 | |
| 2-2 | 09471H12019H000 | BULB (12V, 10W) | 1 | 12V RY10W |
| 3 | 08310-0010A-000 | HEXAGON NUT | 4 | |
| 4 | 35616H11A01H000 | PLATE, TURNSIGNAL | 2 | |
| 5 | 35603H2C000H000 | LAMP ASSY, REAR TURNSIGNAL, R | 1 | |
| 5-1 | 35630H2C000H000 | UNIT, FRONT TURNSIGNAL, L | 1 | |
| 5-2 | 09471H12019H000 | BULB (12V, 10W) | 1 | 12V RY10W |
| 6 | 35604H2C000H000 | LAMP ASSY, REAR TURNSIGNAL, L | 1 | |
| 6-1 | 35610H2C000H000 | UNIT, FRONT TURNSIGNAL, R | 1 | |
| 6-2 | 09471H12019H000 | BULB (12V, 10W) | 1 | 12V RY10W |
| 7 | 35616H40100H000 | PLATE, TURNSIGNAL | 2 | |
| 8 | 38610H11222H000 | RELAY ASSY, TURNSIGNAL | 1 | |

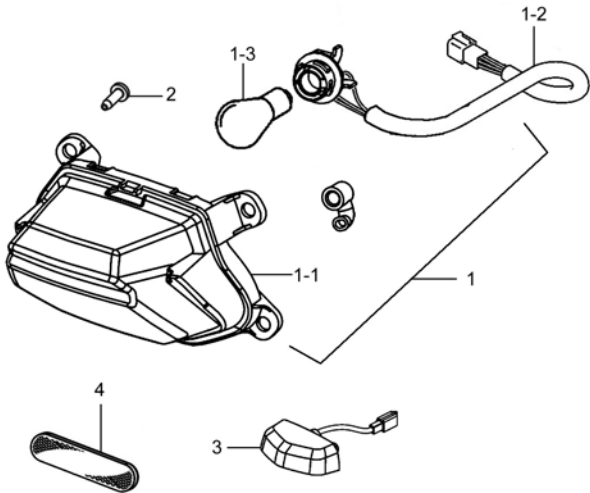
3



Fig. 25

Fig.25 REAR COMBINATION LAMP (P12-S240-0005)

| REF. No. | PART No. | DESCRIPTION | Q'TY | REMARKS |
|----------|-----------------|-----------------------------|------|------------|
| 1 | 35710H40100H000 | LAMP ASSY, REAR COMB | 1 | |
| 1-1 | 35720H40100H000 | UNIT, REAR COMB | 1 | |
| 1-2 | 35718H40100H000 | CORD COMP, REAR COMB | 1 | |
| 1-3 | 09471-12128-000 | BULB (12V, 21/5W) | 1 | 12V P21/5W |
| 2 | 92125-33GC0-000 | SCREW, LID INNER COVER | 6 | |
| 3 | 35910H40102H000 | LAMP ASSY, LICENSE | 1 | |
| 4 | 35970H2C001H000 | REFLEX REFLECTOR ASSY, REAR | 1 | |



3

Fig. 26

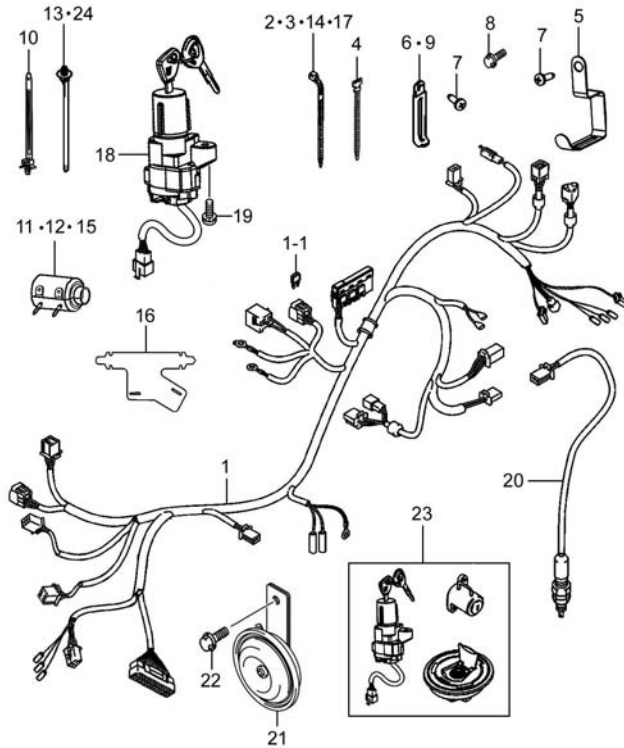


Fig.26 WIRING HARNESS (P12-S250-0006)

| REF. No. | PART No. | DESCRIPTION | Q' TY | REMARKS |
|----------|-----------------|-----------------------------------|-------|---------|
| 1 | 36610H40001H000 | HARNESS WIRING | 1 | |
| 1-1 | 36720H2C100H000 | FUSE ASSY | 2 | |
| 2 | 36990-32G20-000 | CLAMP, WIRING HARNESS | 1 | |
| 3 | 36990-32G10-000 | CLAMP, WIRING HARNESS | 2 | |
| 4 | 09407-12402-000 | CLAMP, WIRING HARNESS | 2 | |
| 5 | 36651-26H50-000 | CLAMP, WIRING HARNESS | 1 | |
| 6 | 09404-06030-000 | CLAMP | 2 | |
| 7 | 03541-0416A-000 | CROSS RECESSED HEAD TAPPING SCREW | 4 | |
| 8 | 01550-0610A-000 | BOLTS, HEXAGON HEAD FLANGE | 1 | |
| 9 | 09404-06429-000 | CLAMP, CARB OVFL HOSE | 2 | |
| 10 | 36651-12F10-000 | CLAMP | 1 | |
| 11 | 36618H2A000H000 | BOOT, WIRING HARNESS | 2 | |
| 12 | 36618H2D000H000 | PROTECTOR, WIRING HARNESS | 1 | |
| 13 | 36651-26H10-000 | CLAMP, WIRING HARNESS | 1 | |
| 14 | 09407-10404-000 | CLAMP, WIRING HARNESS | 1 | |
| 15 | 36618H79201H000 | BOOT, WIRING HARNESS | 1 | |
| 16 | 36611H40101H000 | PROTECTOR, WIRING HARNESS | 1 | |
| 17 | 36990-32G30-000 | CLAMP, WIRING HARNESS | 1 | |
| 18 | 37100H2F020H000 | LOCK ASSY, STEERING | 1 | |
| 19 | 09139-06048-000 | BOLT, STEERING LOCK | 2 | |
| 20 | 37740H40000H000 | SWITCH ASSY, STOP LAMP | 1 | |
| 21 | 38500H2H000H000 | HORN ASSY | 1 | |
| 22 | 01550-0612A-000 | BOLT | 1 | |
| 23 | 37011H2F020H000 | LOCK SET | 1 | |
| 24 | 36651-26H00-000 | CLAMP, WIRING HARNESS | 1 | |

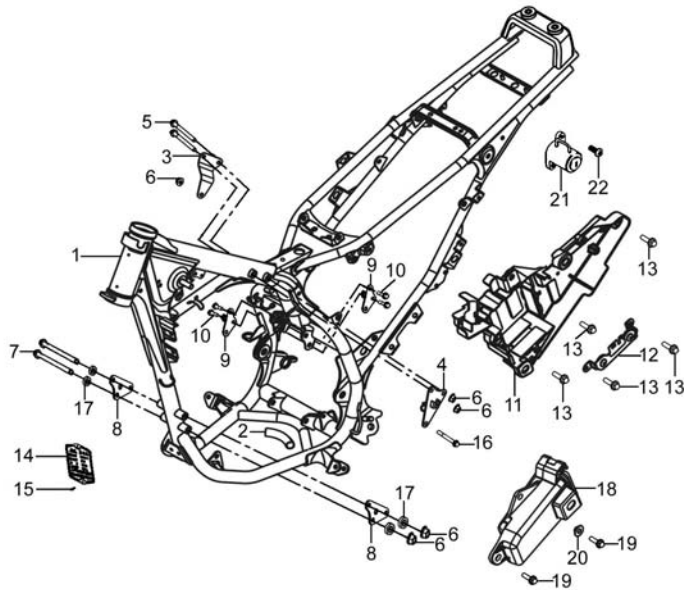
3



Fig. 27

Fig.27 FRAME (P12-S260-0006)

| REF. No. | PART No. | DESCRIPTION | Q' TY | REMARKS |
|----------|-----------------|------------------------------|-------|---------|
| 1 | 41100H40000H000 | FRAME COMP | 1 | |
| 2 | 41762H40100H000 | PROTECTOR | 1 | |
| 3 | 41970H40000H000 | PLATE COMP, ENG MTG UPPER, R | 1 | |
| 4 | 41980H40100H000 | PLATE COMP, ENG MTG UPPER, L | 1 | |
| 5 | 01550-0875A-000 | HEXAGON BOLT WITH FLANGE | 2 | |
| 6 | 08319-3108A-000 | NUT | 5 | |
| 7 | 09103H08010H000 | BOLT, HEXAGON | 2 | |
| 8 | 41992H40100H000 | BRACKET, ENG MTG LOWER, R | 2 | |
| 9 | 41941H40110H000 | PLATE, ENG MTG RR, L | 2 | |
| 10 | 01550-0816A-000 | HEXAGON BOLT WITH FLANGE | 4 | |
| 11 | 41540H40100H000 | BOX ASSY, BATTERY | 1 | |
| 12 | 41540H40110H000 | HOLDER ASSY, BATTERY | 1 | |
| 13 | 01550-0612A-000 | BOLT | 5 | |
| 14 | 68311H56110H000 | PLATE, LICENSE | 1 | |
| 15 | 09229H03003H000 | RIVET, BLIND | 2 | |
| 16 | 09103H08012H000 | BOLT, HEXAGON | 1 | |
| 17 | 09180H08026H000 | SPACER | 4 | |
| 18 | 47430H40101H000 | BOX ASSY, TOOL | 1 | |
| 19 | 01550-0616A-000 | BOLT | 2 | |
| 20 | 09180H06034H000 | SPACER | 1 | |
| 21 | 95700H05310H000 | LOCK ASSY, SEAT NO. 1 | 1 | |
| 22 | 95729-05360-000 | SCREW, HELMET LOCK | 2 | |



4

Fig. 28

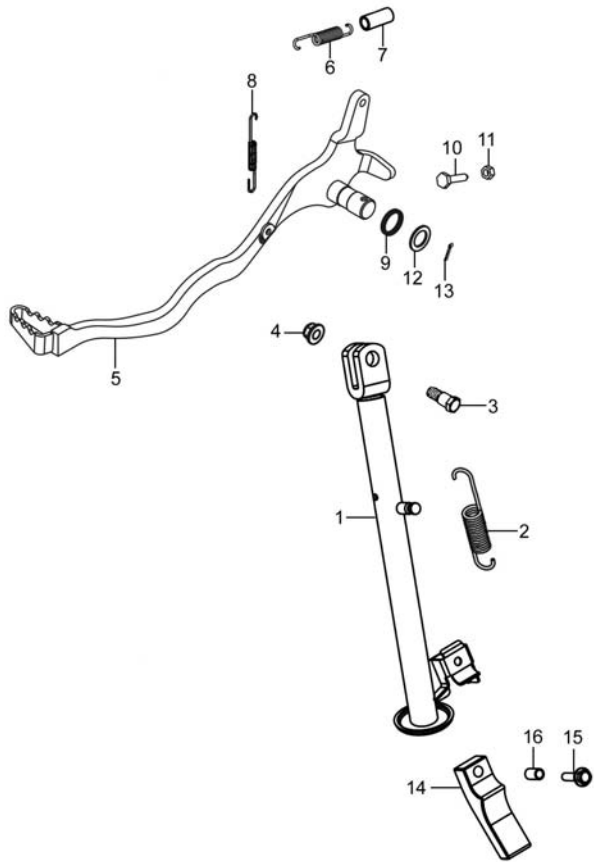


Fig.28 STAND (P12-S270-0003)

| REF. No. | PART No. | DESCRIPTION | Q' TY | REMARKS |
|----------|-----------------|----------------------------|-------|---------|
| 1 | 42310H40100H000 | STAND COMP, PROP | 1 | |
| 2 | 42241H40100H000 | SPRING, PROP STAND | 1 | |
| 3 | 09111H10009H000 | BOLT | 1 | |
| 4 | 08319-3110A-000 | NUT | 1 | |
| 5 | 43110H40110H000 | PEDAL COMP, BRAKE | 1 | |
| 6 | 09443H14004H000 | SPRING, TENSION | 1 | |
| 7 | 43142H21302H000 | HOSE, RUBBER | 1 | |
| 8 | 09443H08001H000 | SPRING, TENSION | 1 | |
| 9 | 43116H22500H000 | SEAL, BRAKE PEDAL | 2 | |
| 10 | 43159-45F00-000 | BOLT, BRAKE PEDAL ADJUSTER | 1 | |
| 11 | 08310-0006A-000 | NUT | 1 | |
| 12 | 09160H17001H000 | WASHER, PLAIN | 1 | |
| 13 | 04111-2525A-000 | COTTER PIN | 1 | |
| 14 | 42336H40100H000 | RUBBER, PROP STAND | 1 | |
| 15 | 01550-0625A-000 | BOLT | 1 | |
| 16 | 09180H06035H000 | SPACER | 1 | |

4



Fig. 29

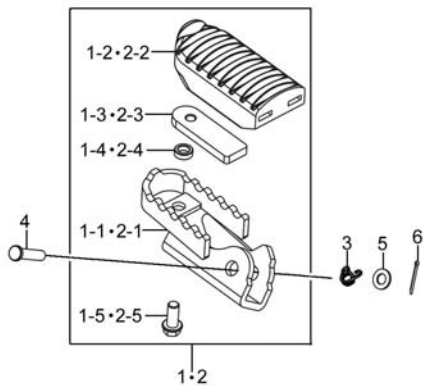
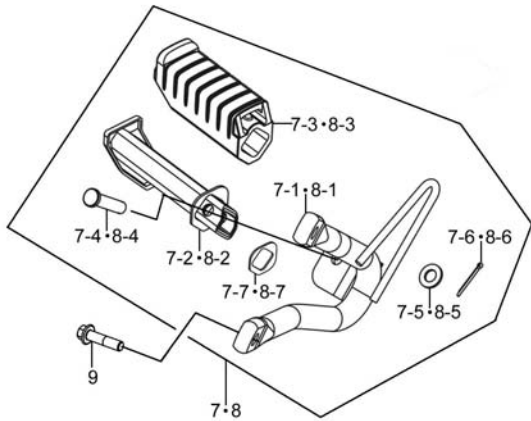


Fig.29 FOOTREST (P12-S280-0005)

| REF. No. | PART No. | DESCRIPTION | Q' TY | REMARKS |
|----------|-----------------|----------------------------------|-------|---------|
| 1 | 43501H40102H000 | FOOTREST ASSY, FRONT, R | 1 | |
| 1-1 | 43510H40101H000 | BRACKET COMP, FR FOOTREST, R | 1 | |
| 1-2 | 43551H40100H000 | RUBBER, FRONT FOOTREST | 1 | |
| 1-3 | 43581H40100H000 | PLATE, FOOTREST | 1 | |
| 1-4 | 09180H06010H000 | SPACER | 1 | |
| 1-5 | 09103H06020H000 | BOLT | 1 | |
| 2 | 43502H40102H000 | FOOTREST ASSY, FRONT, L | 1 | |
| 2-1 | 43520H40101H000 | BRACKET COMP, FR FOOTREST, L | 1 | |
| 2-2 | 43551H40100H000 | RUBBER, FRONT FOOTREST | 1 | |
| 2-3 | 43581H40100H000 | PLATE, FOOTREST | 1 | |
| 2-4 | 09180H06010H000 | SPACER | 1 | |
| 2-5 | 09103H06020H000 | BOLT | 1 | |
| 3 | 09448H14005H000 | SPRING, TORSION | 2 | |
| 4 | 09200H08004H000 | PIN WITH HOLE | 2 | |
| 5 | 09160-08153-000 | WASHER, PLAIN | 2 | |
| 6 | 04111-2020A-000 | COTTER PIN | 2 | |
| 7 | 43600H40100H000 | FOOTREST ASSY, PILLION, R | 1 | |
| 7-1 | 43620H40100H000 | HOLDER COMP, PILLION FOOTREST, R | 1 | |
| 7-2 | 43610H40100H000 | BAR COMP, PILLION FOOTREST, R | 1 | |
| 7-3 | 43612H40100H000 | RUBBER, PILLION FOOTREST, R | 1 | |
| 7-4 | 09200-08002-000 | PIN, FR FOOTREST | 1 | |
| 7-5 | 09160-08153-000 | WASHER, PLAIN | 1 | |
| 7-6 | 04111-2020A-000 | COTTER PIN | 1 | |
| 7-7 | 43631H40100H000 | WASHER, PILLION FOOTREST RUBBER | 1 | |
| 8 | 43700H40100H000 | FOOTREST ASSY, PILLION, L | 1 | |
| 8-1 | 43720H40100H000 | HOLDER COMP, PILLION FOOTREST, L | 1 | |
| 8-2 | 43710H40100H000 | BAR COMP, PILLION FOOTREST, L | 1 | |
| 8-3 | 43712H40100H000 | RUBBER, PILLION FOOTREST, L | 1 | |
| 8-4 | 09200-08002-000 | PIN, FR FOOTREST | 1 | |

4

Fig. 29

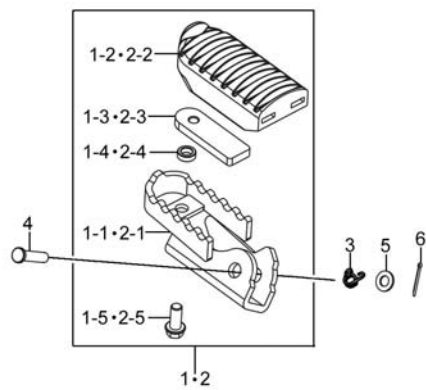
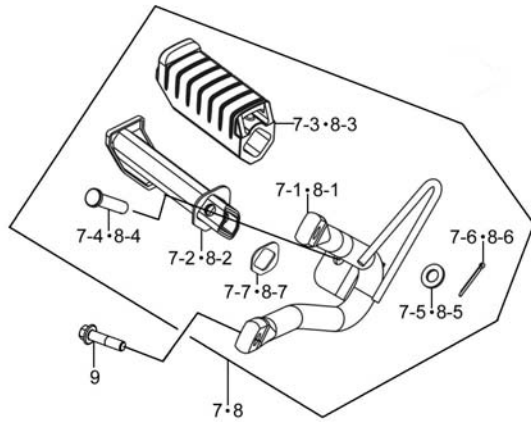


Fig.29 FOOTREST (P12-S280-0005)

| REF. No. | PART No. | DESCRIPTION | Q'TY | REMARKS |
|----------|-----------------|---------------------------------|------|---------|
| 8-5 | 09160-08153-000 | WASHER, PLAIN | 1 | |
| 8-6 | 04111-2020A-000 | COTTER PIN | 1 | |
| 8-7 | 43631H40100H000 | WASHER, PILLION FOOTREST RUBBER | 1 | |
| 9 | 01550-0825A-000 | BOLTS, HEXAGON HEAD FLANGE | 4 | |

4



Fig. 30

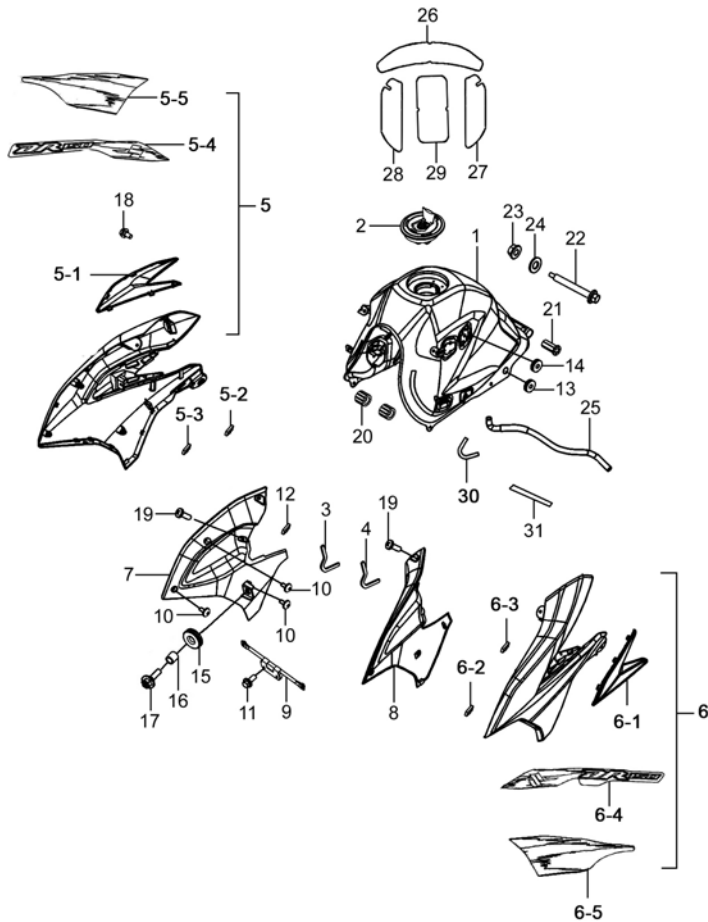


Fig.30 FUEL TANK (P12-S290-0005)

| REF. No. | PART No. | DESCRIPTION | Q' TY | REMARKS |
|----------|-----------------|---|-------|---------|
| 6 | 44018H4010HHF04 | COVER SET, FUEL TANK, L (F04) | 1 | |
| 6 | 44018H4010HHF05 | COVER SET, FUEL TANK, L (F05) | 1 | |
| 6 | 44018H4010HHF02 | COVER SET, FUEL TANK, L (F02) | 1 | |
| 6-1 | 44183H40100H000 | SHIELD, FUEL TANK, L | 1 | |
| 6-2 | 44256H22500H000 | SEPARATOR | 5 | |
| 6-3 | 44256H40100H000 | SEPARATOR | 1 | |
| 6-4 | 68226H40130HTL1 | TAPE, FUEL TANK LEFT COVER, NO. 1 (TL1) | 1 | |
| 6-4 | 68226H40130HTL2 | TAPE, FUEL TANK LEFT COVER, NO. 1 (TL2) | 1 | |
| 6-4 | 68226H40130HS52 | TAPE, FUEL TANK LEFT COVER, NO. 1 (S52) | 1 | |
| 6-5 | 68126H40110HTL1 | TAPE, FUEL TANK LEFT COVER, NO. 2 (TL1) | 1 | |
| 6-5 | 68126H40110HTL2 | TAPE, FUEL TANK LEFT COVER, NO. 2 (TL2) | 1 | |
| 6-5 | 68126H40110HS52 | TAPE, FUEL TANK LEFT COVER, NO. 2 (S52) | 1 | |
| 7 | 44271H40100H000 | COVER, FUEL TANK FRONT, R | 1 | |
| 8 | 44281H40110H000 | COVER, FUEL TANK FRONT L | 1 | |
| 9 | 44130H40100H000 | BRACKET COMP, FUEL TANK FRONT | 1 | |
| 10 | 92125-33GC0-000 | SCREW, L ID INNER COVER | 6 | |
| 11 | 01550-0612A-000 | BOLT | 2 | |

4

Fig. 30

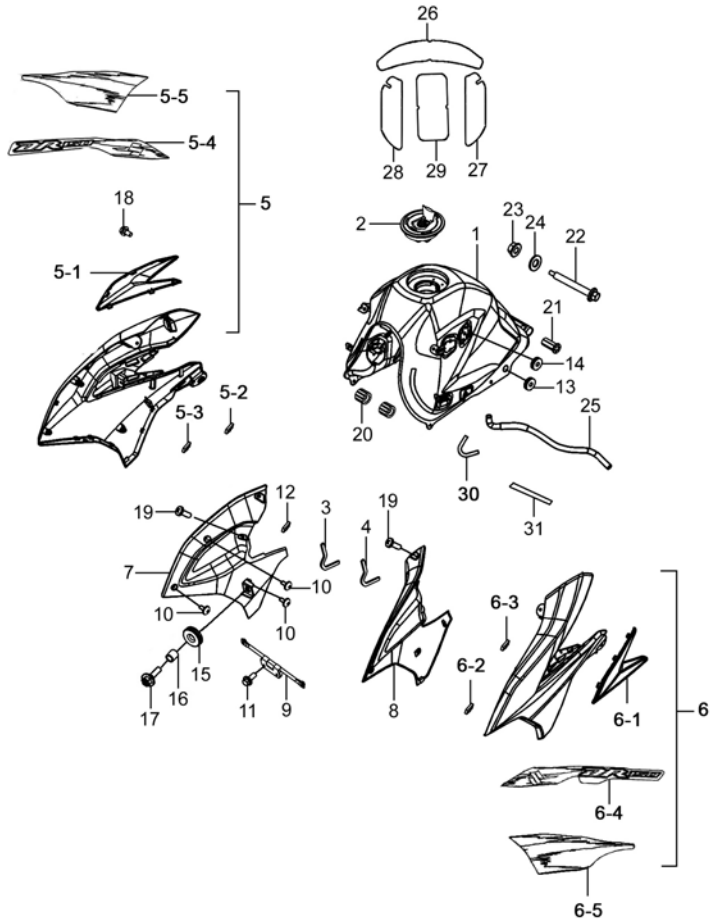


Fig.30 FUEL TANK (P12-S290-0005)

| REF. No. | PART No. | DESCRIPTION | Q' TY | REMARKS |
|----------|-----------------|-------------------------------|-------|---------|
| 12 | 44256H22500H000 | SEPARATOR | 2 | |
| 13 | 47312H02100H000 | RUBBER CUSHION | 2 | |
| 14 | 09320H08005H000 | CUSHION | 2 | |
| 15 | 09320-09016-000 | CUSHION, CYL COWLING | 2 | |
| 16 | 09180-06263-000 | SPACER, CYL COWLING (L9) | 2 | |
| 17 | 09116-06167-000 | BOLT WITH WASHER | 2 | |
| 18 | 09111-06106-000 | BOLT | 2 | |
| 19 | 02142-0514B-000 | CROSS RECESSED HEAD SCREW | 4 | |
| 20 | 44281H40100H000 | CUSHION, FUEL TANK | 2 | |
| 21 | 44542H40100H000 | CUSHION, FUEL TANK REAR LOWER | 2 | |
| 22 | 09111H06016H000 | BOLT | 1 | |
| 23 | 08316-1006A-000 | NUT | 1 | |
| 24 | 09160-06088-000 | WASHER, REAR COMB LAMP | 1 | |
| 25 | 44423H40101H000 | HOSE, FUEL TANK WATER DRAIN | 1 | |
| 26 | 44283H40101H000 | PROTECTOR, FUEL TANK NO. 1 | 1 | |
| 27 | 44284H40101H000 | PROTECTOR, FUEL TANK NO. 2 | 1 | |
| 28 | 44285H40101H000 | PROTECTOR, FUEL TANK NO. 3 | 1 | |
| 29 | 44286H2F000H000 | PROTECTOR, FUEL TANK NO. 4 | 2 | |
| 30 | 44259H40100H000 | SEPARATOR | 2 | |
| 31 | 44256H40120H000 | SEPARATOR | 1 | |

4

Fig. 31

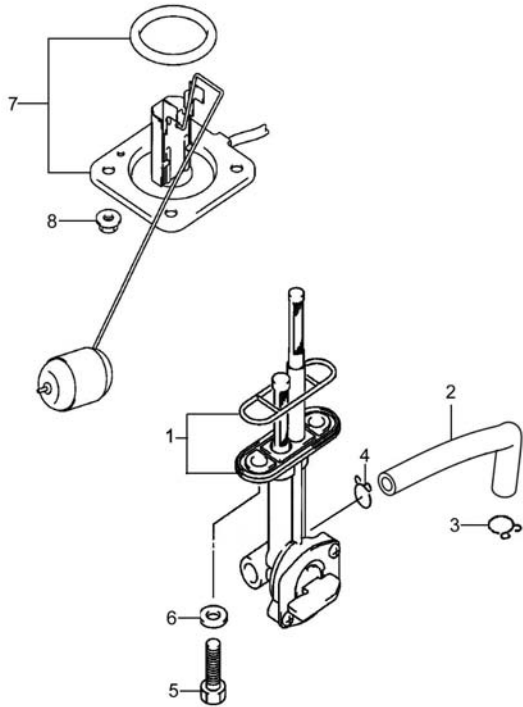


Fig.31 FUEL COCK (P12-S300-0002)

| REF. No. | PART No. | DESCRIPTION | Q' TY | REMARKS |
|----------|-----------------|-------------------------------|-------|---------|
| 1 | 44300H2F300H000 | COCK ASSY, FUEL | 1 | |
| 2 | 44421H40000H000 | HOSE, FUEL | 1 | |
| 3 | 09401H08302H000 | CLAMP | 1 | |
| 4 | 09401-09101-000 | CLAMP | 1 | |
| 5 | 09128-06006-000 | BOLT, FUEL COCK | 2 | |
| 6 | 09168H06026H000 | GASKET, FUEL COCK | 2 | |
| 7 | 34810H40000H000 | GAUGE ASSY, FUEL LEVEL SENDER | 1 | |
| 8 | 08316-1006A-000 | NUT | 4 | |

4



Fig. 32

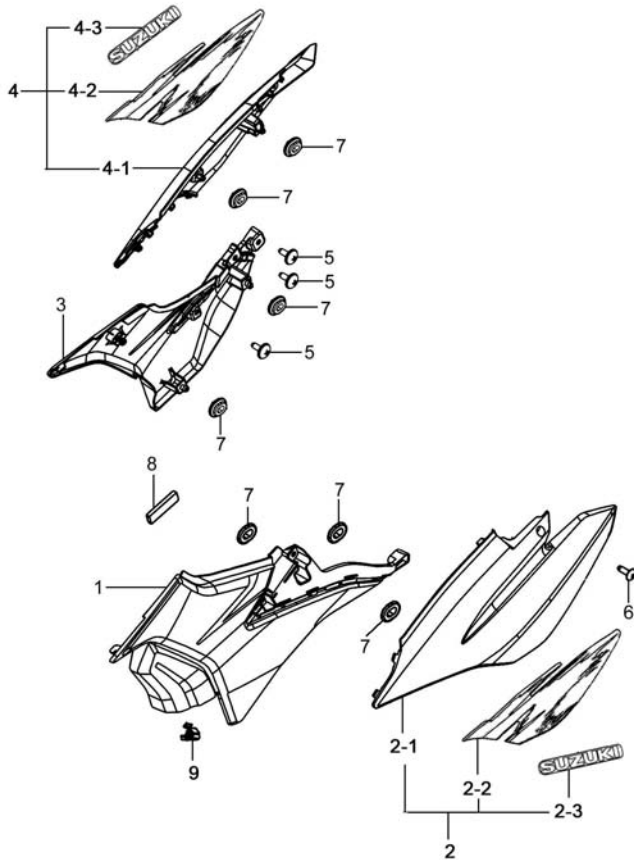


Fig.32 FRAME COVER (P12-S310-0006)

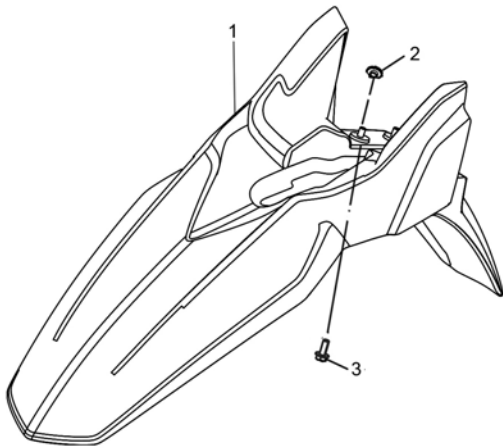
| REF. No. | PART No. | DESCRIPTION | Q'TY | REMARKS |
|----------|-----------------|---------------------------------|------|---------|
| 1 | 47211H40100H521 | COVER, FRAME, L (BLACK) | 1 | |
| 2 | 47022H4010AHF03 | LID SET, FRAME COVER, L (WHITE) | 1 | |
| 2 | 47022H4010AHF04 | LID SET, FRAME COVER, L (BLACK) | 1 | |
| 2 | 47022H4010AHF02 | LID SET, FRAME COVER, L (BLACK) | 1 | |
| 2-1 | 47212H40100H913 | LID, FRAME COVER, L (WHITE) | 1 | |
| 2-1 | 47212H40100H521 | LID, FRAME COVER, L (BLACK) | 1 | |
| 2-2 | 68167H40100HTL1 | TAPE, TAIL COVER, L (TL1) | 1 | |
| 2-2 | 68167H40100HTL2 | TAPE, TAIL COVER, L (TL2) | 1 | |
| 2-2 | 68167H40100HS52 | TAPE, TAIL COVER, L (S52) | 1 | |
| 2-3 | 68131H40100HBLA | EMBLEM, SUZUKI (BLA) | 1 | |
| 2-3 | 68131H40100HSIL | EMBLEM, SUZUKI (SIL) | 1 | |
| 3 | 47111H40100H521 | COVER, FRAME, R (BLACK) | 1 | |
| 4 | 47012H4010AHF03 | LID SET, FRAME COVER, R (WHITE) | 1 | |
| 4 | 47012H4010AHF04 | LID SET, FRAME COVER, R (BLACK) | 1 | |
| 4 | 47012H4010AHF02 | LID SET, FRAME COVER, R (BLACK) | 1 | |
| 4-1 | 47112H40100H913 | LID, FRAME COVER, R (WHITE) | 1 | |
| 4-1 | 47112H40100H521 | LID, FRAME COVER, R (BLACK) | 1 | |
| 4-2 | 68165H40100HTL1 | TAPE, TAIL COVER, R (TL1) | 1 | |
| 4-2 | 68165H40100HTL2 | TAPE, TAIL COVER, R (TL2) | 1 | |
| 4-2 | 68165H40100HS52 | TAPE, TAIL COVER, R (S52) | 1 | |
| 4-3 | 68131H40100HBLA | EMBLEM, SUZUKI (BLA) | 1 | |
| 4-3 | 68131H40100HSIL | EMBLEM, SUZUKI (SIL) | 1 | |
| 5 | 92125-33GC0-000 | SCREW, LID INNER COVER | 6 | |
| 6 | 03241-0516B-000 | SCREW | 2 | |
| 7 | 47312H02100H000 | RUBBER CUSHION | 7 | |
| 8 | 47846H40100H000 | CUSHION | 2 | |
| 9 | 48291-32GH0-000 | CLIP | 1 | |

4

Fig. 33

Fig.33 FRONT FENDER (P12-S320-0002)

| REF. No. | PART No. | DESCRIPTION | Q' TY | REMARKS |
|----------|-----------------|-----------------------|-------|---------|
| 1 | 53111H40100H913 | FENDER, FRONT (WHITE) | 1 | |
| 1 | 53111H40100H521 | FENDER, FRONT (BLACK) | 1 | |
| 2 | 09180H06033H000 | SPACER | 4 | |
| 3 | 09116-06167-000 | BOLT WITH WASHER | 4 | |



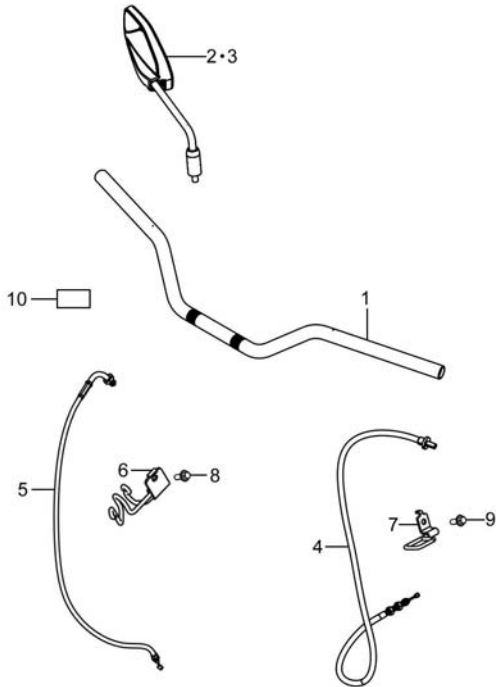
4



Fig. 34

Fig.34 HANDLEBAR (P12-S330-0006)

| REF. No. | PART No. | DESCRIPTION | Q' TY | REMARKS |
|----------|-----------------|----------------------------|-------|---------|
| 1 | 56110H40102H000 | HANDLEBAR COMP | 1 | |
| 2 | 56500H2A260H000 | MIRROR ASSY, REAR VIEW, R | 1 | |
| 3 | 56600H2A260H000 | MIRROR ASSY, REAR VIEW, L | 1 | |
| 4 | 58200H40101H000 | CABLE ASSY, CLUTCH | 1 | |
| 5 | 58300H40010H000 | CABLE ASSY, THROTTLE | 1 | |
| 6 | 58620H40000H000 | GUIDE COMP, CABLE | 1 | |
| 7 | 58620H40110H000 | GUIDE COMP, CABLE | 1 | |
| 8 | 01550-0610A-000 | BOLTS, HEXAGON HEAD FLANGE | 1 | |
| 9 | 01550-0612A-000 | BOLT | 1 | |
| 10 | 44256H56010H000 | SEPARATOR | 1 | |



4



Fig. 35

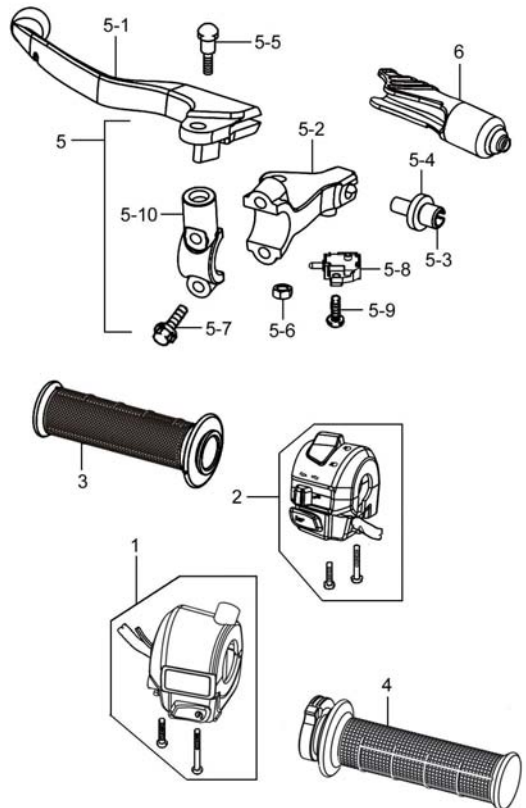


Fig.35 HANDLE SWITCH (P12-S340-0008)

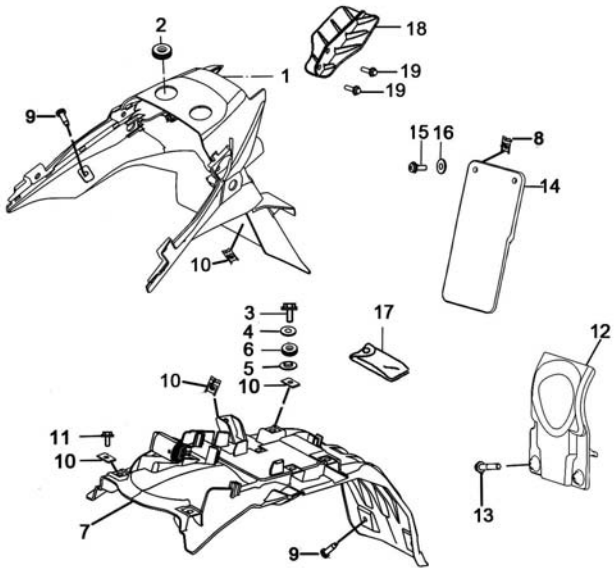
| REF. No. | PART No. | DESCRIPTION | Q' TY | REMARKS |
|----------|-----------------|-----------------------------|-------|---------|
| 1 | 37200H40001H000 | SWITCH ASSY, HANDLE, R | 1 | |
| 2 | 37400H40101H000 | SWITCH ASSY, HANDLE, L | 1 | |
| 3 | 57211H40100H000 | GRIP, L | 1 | |
| 4 | 57110H40001H000 | GRIP COMP, THROTTLE | 1 | |
| 5 | 57500H2J001H000 | LEVER ASSY, CLUTCH & SWITCH | 1 | |
| 5-1 | 57621H2J000H000 | LEVER, CLUTCH | 1 | |
| 5-2 | 57511H2J000H000 | HOLDER, LEVER | 1 | |
| 5-3 | 57441H2J000H000 | ADJUSTER, WIRE | 1 | |
| 5-4 | 57442-45C00-000 | NUT, CABLE ADJUSTER | 1 | |
| 5-5 | 57431-45C01-000 | BOLT, LEVER | 1 | |
| 5-6 | 08319-2106B-000 | U-NUT | 1 | |
| 5-7 | 01547-0628B-000 | BOLTS, HEXAGON HEAD FLANGE | 2 | |
| 5-8 | 57560-28G11-000 | SWITCH ASSY, CLUTCH | 1 | |
| 5-9 | 02112-0410B-000 | CROSS RECESSED HEAD SCREW | 1 | |
| 5-10 | 59671H2G100H000 | HOLDER | 1 | |
| 6 | 57661H2C100H000 | COVER, CLUTCH LEVER | 1 | |

4

Fig. 36

Fig.36 REAR FENDER (P12-S350-0004)

| REF. No. | PART No. | DESCRIPTION | Q' TY | REMARKS |
|----------|-----------------|-----------------------------------|-------|---------|
| 1 | 63111H40100H000 | FENDER, REAR | 1 | |
| 2 | 09320H20002H000 | CUSHION | 2 | |
| 3 | 01550-0625A-000 | BOLT | 2 | |
| 4 | 09160-06006-000 | WASHER | 2 | |
| 5 | 09180H06008H000 | SPACER | 2 | |
| 6 | 09320H08005H000 | CUSHION | 2 | |
| 7 | 63112H40000H000 | BODY, REAR FENDER, FRONT | 1 | |
| 8 | 09148-05077-000 | NUT | 2 | |
| 9 | 09139H06001H000 | SCREW | 4 | |
| 10 | 35157H22501H000 | NUT | 8 | |
| 11 | 01550-0616A-000 | BOLT | 2 | |
| 12 | 63121H40100H000 | COVER, REAR FENDER | 1 | |
| 13 | 09111-06061-000 | SCREW, FRONT FENDER | 2 | |
| 14 | 63113H40100H000 | MUDGUARD, REAR FENDER | 1 | |
| 15 | 03241-0516A-000 | CROSS RECESSED HEAD TAPPING SCREW | 2 | |
| 16 | 09160-05501-000 | WASHER, PLAIN | 2 | |
| 17 | 09800H20037H000 | TOOL ASSY | 1 | |
| 18 | 63125H40000H000 | SHIELD, REAR FENDER | 1 | |
| 19 | 09111-06061-000 | SCREW, FRONT FENDER | 2 | |



4

Fig. 37

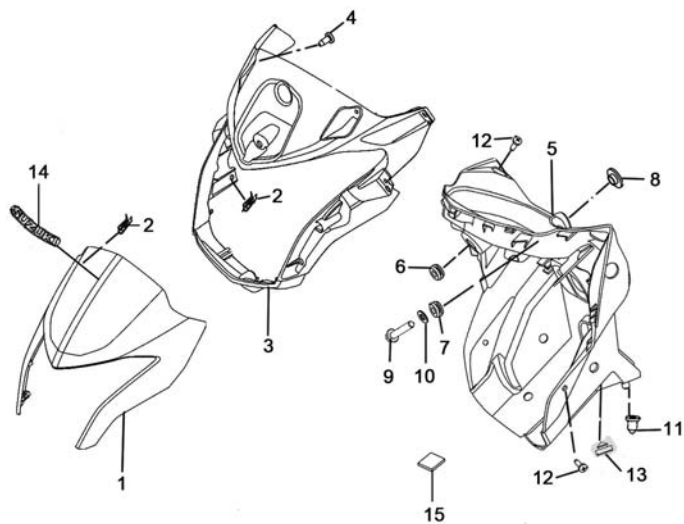


Fig.37 COWLING (P12-S360-0005)

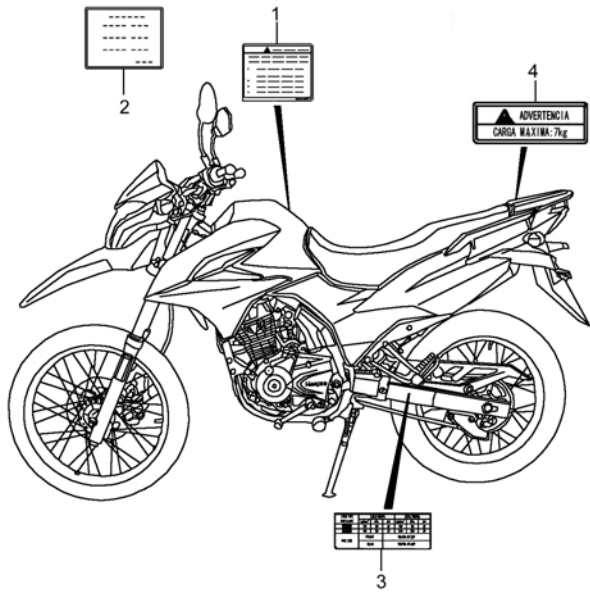
| REF. No. | PART No. | DESCRIPTION | Q'TY | REMARKS |
|----------|-----------------|--------------------------|------|---------|
| 1 | 94414H40100H521 | PANEL, COWLING (BLACK) | 1 | |
| 2 | 09148-05077-000 | NUT | 4 | |
| 3 | 94411H40100H000 | BODY, COWLING | 1 | |
| 4 | 09136H04003H000 | SCREW WITH WASHER | 7 | |
| 5 | 56321H40101H000 | COVER, HANDLE REAR | 1 | |
| 6 | 35382-48H00-000 | CUSHION, HEADLAMP | 1 | |
| 7 | 09320H08001H000 | CUSHION | 2 | |
| 8 | 51544H2A200H000 | SPACER | 2 | |
| 9 | 01550-0625A-000 | BOLT | 2 | |
| 10 | 09160-06027-000 | WASHER, CHAIN CASE FRONT | 2 | |
| 11 | 51589H22500H000 | RUBBER | 2 | |
| 12 | 03241-0516B-000 | SCREW | 4 | |
| 13 | 09321H09002H000 | CUSHION | 2 | |
| 14 | 68281H40100HSIL | EMBLEM, SUZUKI (SIL) | 1 | |
| 15 | 44256H22500H000 | SEPARATOR | 5 | |

4

Fig. 38

Fig.38 LABEL (P12-S370-0006)

| REF. No. | PART No. | DESCRIPTION | Q' TY | REMARKS |
|----------|-----------------|-------------------------|-------|---------|
| 1 | 68319H40000H000 | LABEL, GENERAL WARNING | 1 | |
| 2 | 99011-01X50-029 | MANUAL, OWNER'S | 1 | |
| 3 | 68332H40190H000 | LABEL, TIRE INFORMATION | 1 | |
| 4 | 68391H40010H000 | LABEL, LOADING CAPACITY | 1 | |



4

Fig. 39

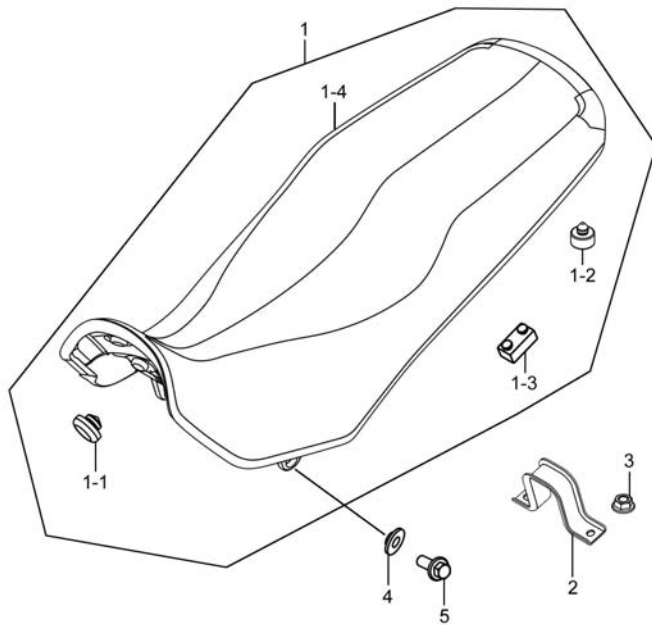


Fig.39 SEAT (P12-S380-0003)

| REF. No. | PART No. | DESCRIPTION | Q' TY | REMARKS |
|----------|-----------------|----------------------------|-------|---------|
| 1 | 45100H40100H000 | SEAT ASSY | 1 | |
| 1-1 | 09329-10001-000 | CUSHION | 4 | |
| 1-2 | 45148H52100H000 | CUSHION, SEAT MOUNT | 6 | |
| 1-3 | 45149H22500H000 | CUSHION, SEAT MOUNT CTR | 4 | |
| 1-4 | 45160H40100H000 | COVER COMP, SEAT | 1 | |
| 2 | 45315H40100H000 | PLATE, SEAT STOPPER, RR | 1 | |
| 3 | 08319-3106A-000 | U-NUT | 2 | |
| 4 | 45219-29J00-000 | SPACER, SEAT | 2 | |
| 5 | 01550-0820A-000 | BOLTS, HEXAGON HEAD FLANGE | 2 | |

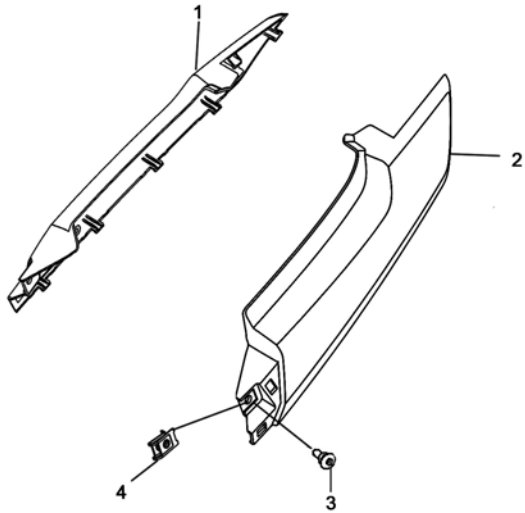
4



Fig. 40

Fig.40 COVER,SEAT TAIL (P12-S390-0003)

| REF. No. | PART No. | DESCRIPTION | Q' TY | REMARKS |
|----------|-----------------|----------------------------|-------|---------|
| 1 | 45511H40100H913 | COVER, SEAT TAIL, R(WHITE) | 1 | |
| 1 | 45511H40100H521 | COVER, SEAT TAIL, R(BLACK) | 1 | |
| 2 | 45512H40100H913 | COVER, SEAT TAIL, L(WHITE) | 1 | |
| 2 | 45512H40100H521 | COVER, SEAT TAIL, L(BLACK) | 1 | |
| 3 | 92125-33GC0-000 | SCREW, LID INNER COVER | 4 | |
| 4 | 09148-05077-000 | NUT | 2 | |



4

Fig.41

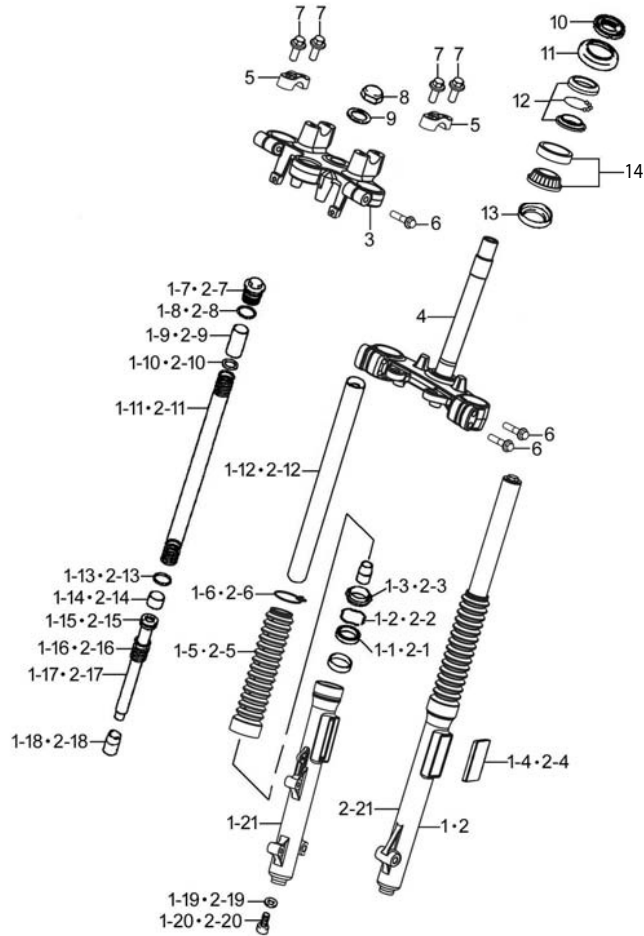


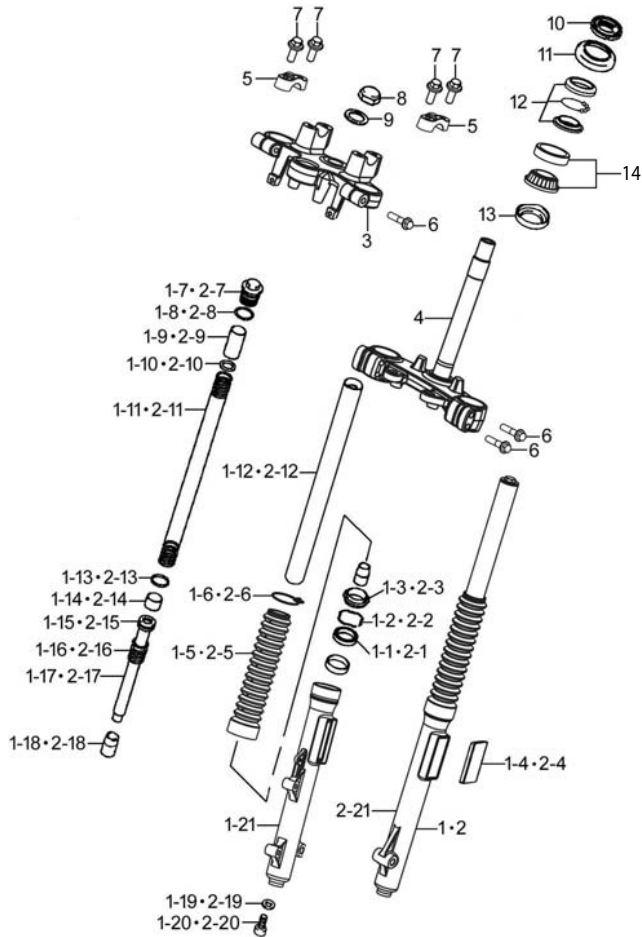
Fig.41 STEERING STEM (P12-S400-0009)

| REF.No. | PART No. | DESCRIPTION | Q'TY | REMARKS |
|---------|-----------------|-------------------------------|------|---------|
| 1 | 51103H40130H000 | DAMPERASSY,FRONT FORK,R | 1 | |
| 1-1 | 51153H40100H000 | SEAL,OIL | 1 | |
| 1-2 | 51156-12FH0-000 | RING,SNAP | 1 | |
| 1-3 | 51173H40100H000 | COVER,DUST SEAL | 1 | |
| 1-4 | 35950H2F000H000 | REFLEX REFLECTOR ASSY,FR SIDE | 1 | |
| 1-5 | 51175H40110H000 | SEAL,DUST | 1 | |
| 1-6 | 51174H40110H000 | BAND,BOOT | 1 | |
| 1-7 | 51189-12FH0-000 | FORK,BOLT | 1 | |
| 1-8 | 51117-12FH0-000 | O-RING | 1 | |
| 1-9 | 51176H40101H000 | COLLAR,SPRING | 1 | |
| 1-10 | 51192-12FH0-000 | WASHER | 1 | |
| 1-11 | 51171H40100H000 | SPRING,DAMPER | 1 | |
| 1-12 | 51110H40100H000 | TUBE COMP,DAMPER | 1 | |
| 1-13 | 51168H40100H000 | SPACER SEAL | 1 | |
| 1-14 | 51152-12FH0-000 | BUSH GUIDE | 1 | |
| 1-15 | 51196-12FH0-000 | RING,PISTON | 1 | |
| 1-16 | 51177H40100H000 | SPRING,FR FORK REBOUND | 1 | |
| 1-17 | 51146H40100H000 | CYLINDER COMP.FR FORK | 1 | |
| 1-18 | 51195-12FH0-000 | PIECE.OIL LOCK | 1 | |
| 1-19 | 51148H40100H000 | PACKING | 1 | |
| 1-20 | 51147-05320-000 | BOLT | 1 | |
| 1-21 | 51130H40120H000 | TUBE COMP,OUTER,R | 1 | |
| 2 | 51104H40130H000 | DAMPERASSY,FRONT FORK,L | 1 | |
| 2-1 | 51153H40100H000 | SEAL,OIL | 1 | |
| 2-2 | 51156-12FH0-000 | RING,SNAP | 1 | |
| 2-3 | 51173H40100H000 | COVER,DUST SEAL | 1 | |
| 2-4 | 35950H2F000H000 | REFLEX REFLECTOR ASSY,FR SIDE | 1 | |
| 2-5 | 51175H40110H000 | SEAL,DUST | 1 | |
| 2-6 | 51174H40110H000 | BAND,BOOT | 1 | |

4

Fig.41

Fig.41 STEERING STEM (P12-S400-0009)



| REF.No. | PART No. | DESCRIPTION | Q'TY | REMARKS |
|---------|-----------------|--------------------------|------|---------|
| 2-7 | 51189-12FH0-000 | FORK,BOLT | 1 | |
| 2-8 | 51117-12FH0-000 | O-RING | 1 | |
| 2-9 | 51176H40101H000 | COLLAR,SPRING | 1 | |
| 2-10 | 51192-12FH0-000 | WASHER | 1 | |
| 2-11 | 51171H40100H000 | SPRING,DAMPER | 1 | |
| 2-12 | 51110H40100H000 | TUBE COMP,DAMPER | 1 | |
| 2-13 | 51168H40100H000 | SPACER SEAL | 1 | |
| 2-14 | 51152-12FH0-000 | BUSH GUIDE | 1 | |
| 2-15 | 51196-12FH0-000 | RING,PISTON | 1 | |
| 2-16 | 51177H40100H000 | SPRING,FR FORK REBOUND | 1 | |
| 2-17 | 51146H40100H000 | CYLINDER COMP.FR FORK | 1 | |
| 2-18 | 51195-12FH0-000 | PIECE.OIL LOCK | 1 | |
| 2-19 | 51148H40100H000 | PACKING | 1 | |
| 2-20 | 51147-05320-000 | BOLT | 1 | |
| 2-21 | 51140H40110H000 | TUBE COMP,OUTER,L | 1 | |
| 3 | 51311H40102H000 | BRACKET,UPPER | 1 | |
| 4 | 51410H40102H000 | BRACKET COMP,UNDER | 1 | |
| 5 | 56211H40101H000 | HOLDER,HANDLEBJPPER | 2 | |
| 6 | 09103H08021H000 | BOLT | 6 | |
| 7 | 01550-0835A-000 | BOLT | 4 | |
| 8 | 51353H11200H000 | NUT | 1 | |
| 9 | 09160H22002H000 | WASHER,PLAIN | 1 | |
| 10 | 51631-48H00-000 | NUT,STEERING STEM | 1 | |
| 11 | 51643H40100H000 | SEAL,STEERING DUST UPPER | 1 | |
| 12 | 09267-25L01-000 | BEARING | 2 | |
| 13 | 51644H40100H000 | SEAL,STEERING LOWER | 1 | |
| 14 | 09265H25002H000 | BEARING,ROLLER | 1 | |

4



Fig.42

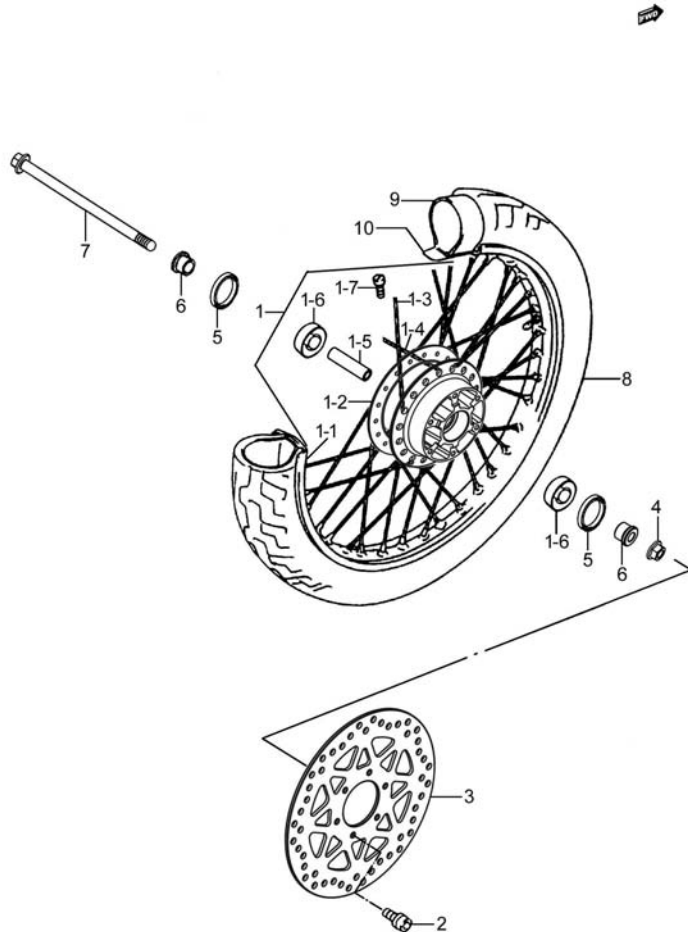


Fig.42 FRONT WHEEL (P12-S410-0003)

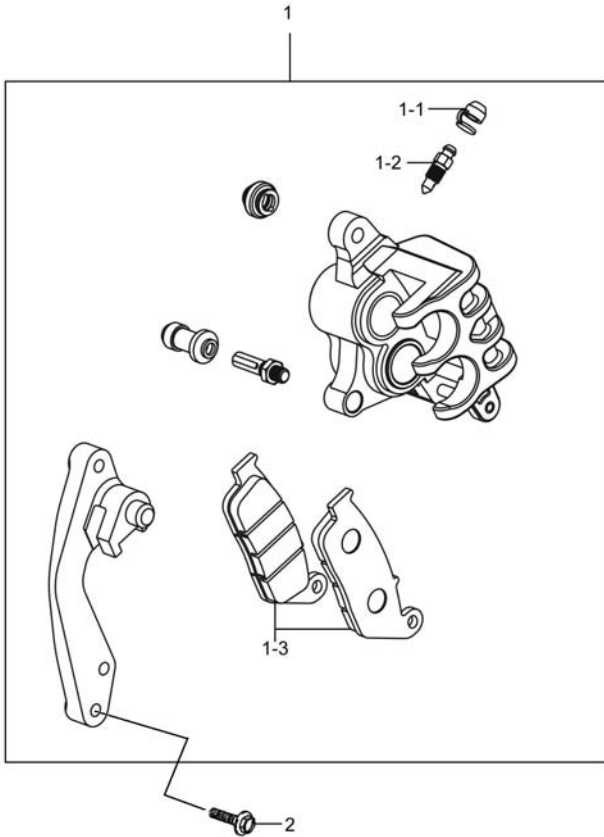
| REF.No. | PART No. | DESCRIPTION | Q'TY | REMARKS |
|---------|-----------------|----------------------------|------|---------|
| 1 | 55033H40100H000 | RIM SET,FRONT WHEEL | 1 | |
| 1-1 | 55311H40100H000 | RIM,FR WHEEL | 1 | |
| 1-2 | 54111H40100H000 | HUB,FRONT WHEEL | 1 | |
| 1-3 | 55322H40100H000 | SPOKE,FRONT WHEEL OUTER | 18 | |
| 1-4 | 55321H40100H000 | SPOKE,FRONT WHEEL INNER | 18 | |
| 1-5 | 54731H40100H000 | SPACER,FRONT HUB BEARING | 1 | |
| 1-6 | 08133-6301B-000 | BALL BEARING | 2 | |
| 1-7 | 55326H11200H000 | NIPPLE,WHEEL SPOKE | 36 | |
| 2 | 59421H40100H000 | BOLT,FRONT BRAKE DISC | 6 | |
| 3 | 59211H40100H000 | DISC,FRONT BRAKE | 1 | |
| 4 | 08319-3112A-000 | U-NUT | 1 | |
| 5 | 54742H2J000H000 | SEAL,FRONT WHEEL BEARING | 2 | |
| 6 | 54741H40101H000 | SPACER,FRONT AXLE | 2 | |
| 7 | 54711H40100H000 | AXLE,FRONT | 1 | |
| 8-1 | 55100-01X00-CEA | TIRE SET,FR 90/90-19 TT | 1 | CEAT |
| 8-2 | 55100-01X00-PIR | TIRE SET,FR 90/90-19 TT | 1 | PIRELLI |
| 9 | 55200H40100H000 | TUBE ASSY,WHEEL INNER | 1 | |
| 10 | 55261H40100H000 | PROTECTOR,WHEEL INNER TUBE | 1 | |

4

Fig. 43

Fig.43 FRONT CALIPER (P12-S420-0003)

| REF. No. | PART No. | DESCRIPTION | Q' TY | REMARKS |
|----------|-----------------|----------------------------|-------|---------|
| 1 | 59300H40100H000 | CALIPER ASSY, FRONT | 1 | |
| 1-1 | 55156-26F10-000 | CAP, BLEEDER | 1 | |
| 1-2 | 59121-26F10-000 | BLEEDER | 1 | |
| 1-3 | 59300H2JY10H000 | PAD COMP | 1 | |
| 2 | 01550-0840A-000 | BOLTS, HEXAGON HEAD FLANGE | 2 | |



4



Fig. 44

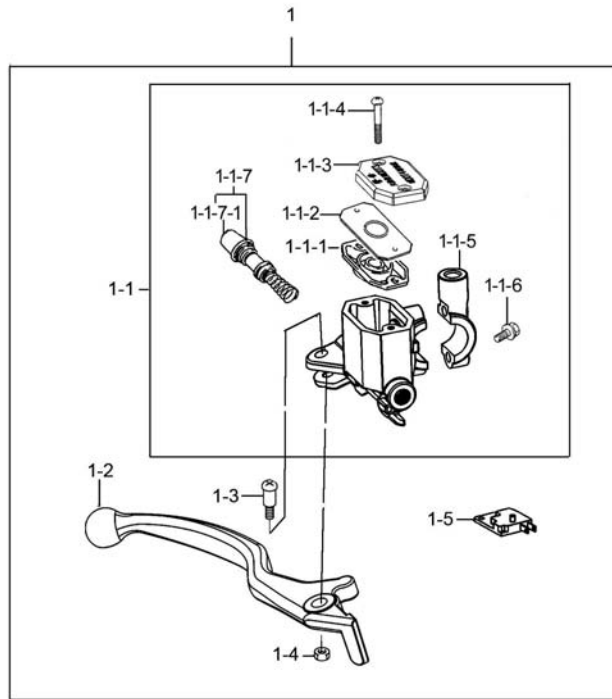


Fig.44 FRONT BRAKE CYLINDER (P12-S430-0005)

| REF. No. | PART No. | DESCRIPTION | Q' TY | REMARKS |
|----------|-----------------|-----------------------------|-------|---------|
| 1 | 59064H2G11CH000 | CYLINDER SET, FRONT MASTER | 1 | |
| 1-1 | 59600H2G111H000 | CYLINDER ASSY, FRONT MASTER | 1 | |
| 1-1-1 | 59667-053B0-000 | DIAPHRAGM | 1 | |
| 1-1-2 | 59668H2G120H000 | PLATE, DIAPERAGM | 1 | |
| 1-1-3 | 59669H2A010H000 | CAP, RESERVOIR TANK | 1 | |
| 1-1-4 | 59689H2G120H000 | SCREW | 2 | |
| 1-1-5 | 59671H2G110H000 | HOLDER | 1 | |
| 1-1-6 | 59675H2A000H000 | BOLT | 2 | |
| 1-1-7 | 59600H36810H000 | PISTON/CUP SET | 1 | |
| 1-1-7-1 | 59666-44300-000 | BOOT | 1 | |
| 1-2 | 57421H40110H000 | LEVER, BRAKE, R | 1 | |
| 1-3 | 57321-45F20-000 | SCREW, BRAKE PIVOT | 1 | |
| 1-4 | 57433-09F00-000 | NUT, BRAKE LEVER PIVOT | 1 | |
| 1-5 | 57460-17C11-000 | SWITCH ASSY, STOP | 1 | |

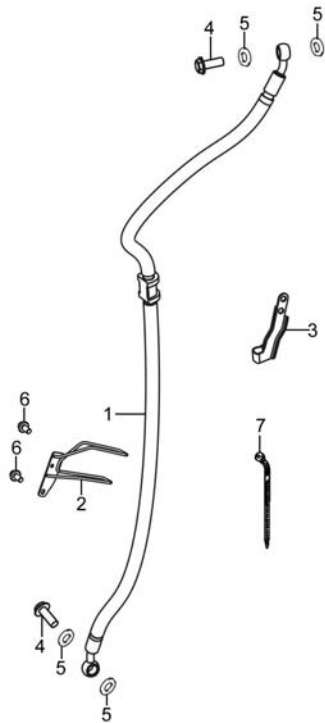
4



Fig. 45

Fig.45 HOSE,FRONT BRAKE (P12-S435-0005)

| REF. No. | PART No. | DESCRIPTION | Q' TY | REMARKS |
|----------|-----------------|------------------------|-------|---------|
| 1 | 59480H40100H000 | HOSE COMP, FRONT BRAKE | 1 | |
| 2 | 59246H40100H000 | CLAMP, BRAKE HOSE | 1 | |
| 3 | 59268H40110H000 | CLAMP, BRAKE HOSE | 1 | |
| 4 | 09360-10039-000 | BOLT, BRAKE FLUID | 2 | |
| 5 | 09161-10009-000 | WASHER, BRAKE FLUID | 4 | |
| 6 | 01550-0612A-000 | BOLT | 2 | |
| 7 | 09407-12402-000 | CLAMP, WIRING HARNESS | 1 | |

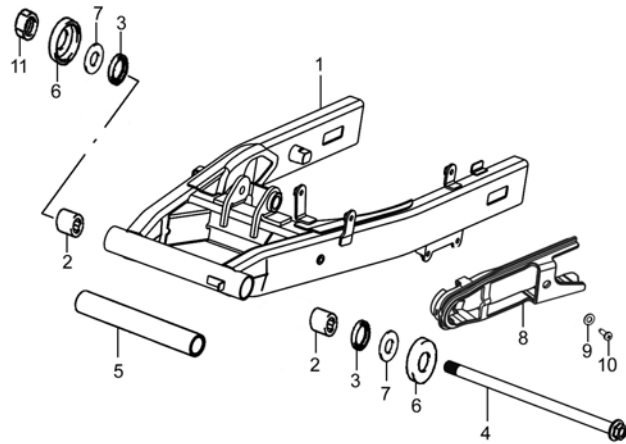


4



Fig. 46

Fig.46 REAR SWINGING ARM (P12-S440-0003)



| REF. No. | PART No. | DESCRIPTION | Q'TY | REMARKS |
|----------|-----------------|--------------------------------|------|---------|
| 1 | 61100H40101H000 | SWINGINGARM COMP, REAR | 1 | |
| 2 | 09263-20041-000 | BEARING RR SWGARM PIVOT | 2 | |
| 3 | 09285-20005-000 | SEAL | 2 | |
| 4 | 61211H37200H000 | SHAFT, RR SWG ARM PIVOT | 1 | |
| 5 | 61282H40101H000 | SPACER, RR SWGARM PIVOT CENTER | 1 | |
| 6 | 61262-05300-000 | COVER, RR SWGARM PIVOT | 2 | |
| 7 | 08211-14321-000 | WASHER | 2 | |
| 8 | 61273H40101H000 | BUFFER, CHAIN TOUCH DEFENSE | 1 | |
| 9 | 61275H40100H000 | WASHER | 1 | |
| 10 | 02112-0612A-000 | SCREW | 1 | |
| 11 | 08319-3114A-000 | U-NUT | 1 | |

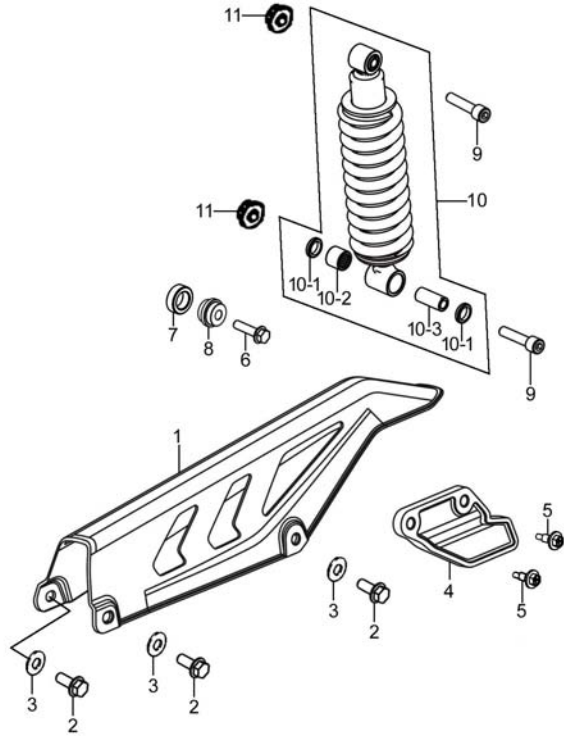
4



Fig. 47

Fig.47 REARSHOCK ABSORBER (P12-S450-0005)

| REF. No. | PART No. | DESCRIPTION | Q' TY | REMARKS |
|----------|-----------------|---------------------------|-------|---------|
| 1 | 61311H40100H000 | CASE, CHAIN | 1 | |
| 2 | 01550-0612A-000 | BOLT | 3 | |
| 3 | 61315-45F00-000 | WASHER, CHAIN CASE | 3 | |
| 4 | 61149H40100H000 | GUARD, CHAIN | 1 | |
| 5 | 09111H06010H000 | BOLT | 2 | |
| 6 | 01550-0635A-000 | BOLT | 1 | |
| 7 | 09180H07005H000 | SPACER | 1 | |
| 8 | 09320H10004H000 | RUBBER BUSH | 1 | |
| 9 | 62313H40101H000 | BOLT, RR SHOCK ABS LOWER | 2 | |
| 10 | 62100H40112H000 | ABSORBER ASSY, REAR SHOCK | 1 | |
| 10-1 | 62129H40110H000 | COVER, DUST SEAL | 2 | |
| 10-2 | 62113H40110H000 | BEARING | 1 | |
| 10-3 | 62115H40101H000 | BEARING PAD | 1 | |
| 11 | 08319-3110A-000 | NUT | 2 | |



4



Fig.48

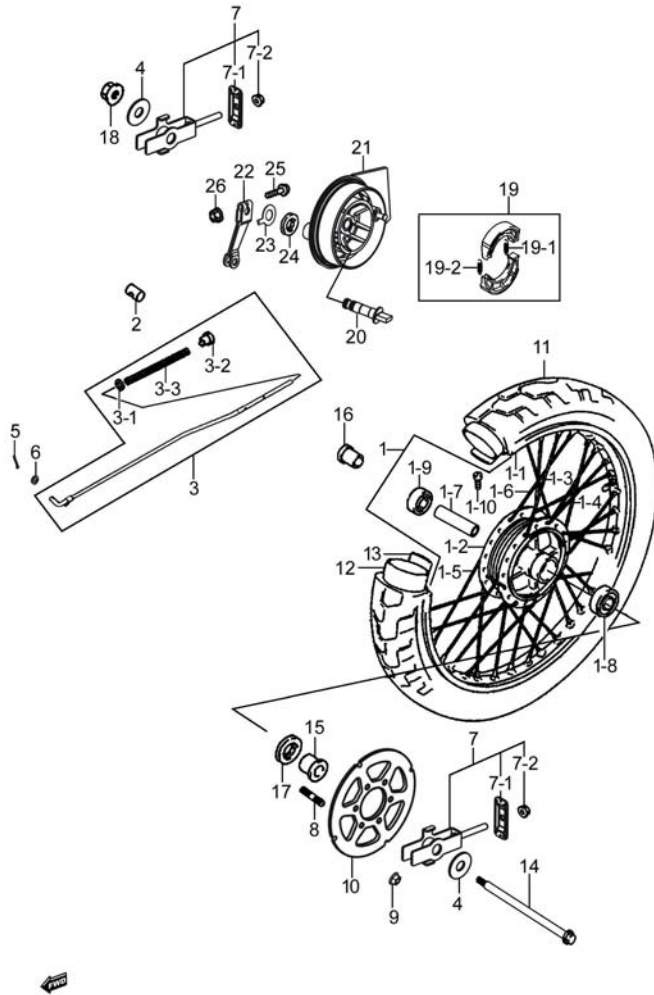


Fig.48 REAR WHEEL (P12-S460-0004)

| REF.No. | PART No. | DESCRIPTION | Q'TY | REMARKS |
|---------|-----------------|-----------------------------|------|---------|
| 1 | 65032H40100H000 | RIM SET,REAR WHEEL | 1 | |
| 1-1 | 65311H40100H000 | RIM,RR WHEEL | 1 | |
| 1-2 | 64110H40102H000 | HUB COMP,REARWHEEL | 1 | |
| 1-3 | 65322H40100H000 | SPOKE,REAR WHEEL OUTER | 9 | |
| 1-4 | 65321H40100H000 | SPOKE,WHEEL INNER | 9 | |
| 1-5 | 65328H40100H000 | SPOKE,REAR WHEEL OUTER No.2 | 9 | |
| 1-6 | 65327H40100H000 | SPOKE,REAR WHEEL INNER No.2 | 9 | |
| 1-7 | 64731H40100H000 | SPACER,REAR HUB BEARING | 1 | |
| 1-8 | 08134-63027-000 | BALL BEARING | 1 | |
| 1-9 | 08133-62027-000 | BALL BEARING | 1 | |
| 1-10 | 55326H11200H000 | NIPPLE,WHEEL SPOKE | 36 | |
| 2 | 43321H11200H000 | PIN | 1 | |
| 3 | 43031H4010BH000 | ROD SET,REAR BRAKE | 1 | |
| 3-1 | 08322-0106A-000 | WASHER,PLAIN | 1 | |
| 3-2 | 09150H06001H000 | NUT | 1 | |
| 3-3 | 09440H09007H000 | SPRING,COMPRESSION | 1 | |
| 4 | 64712H40100H000 | WASHER,CHAIN ADJUSTER | 2 | |
| 5 | 04111-2015A-000 | COTTER PIN | 1 | |
| 6 | 08322-0106A-000 | WASHER,PLAIN | 1 | |
| 7 | 61041H4010AH000 | ADJUSTER SET,CHAIN | 2 | |
| 7-1 | 61421H40101H000 | PLATE,CHAIN ADJUSTER GUIDE | 1 | |
| 7-2 | 08319-3108A-000 | NUT | 1 | |
| 8 | 64613H40100H000 | BOLT,SPROCKET,REAR | 6 | |
| 9 | 08319-3108A-000 | NUT | 6 | |
| 10 | 64511H40100H000 | SPROCKET,REAR | 1 | |
| 11-1 | 65100-01X10-CEA | TIRE SET,RR 110/90-17 TT | 1 | CEAT |
| 11-2 | 65100-01X00-PIR | TIRE SET,RR 110/90-17 TT | 1 | PIRELLI |
| 12 | 65200H40100H000 | TUBE ASSY,WHEEL INNER | 1 | |
| 13 | 65261H40100H000 | PROTECTOR,WHEEL INNER TUBE | 1 | |
| 14 | 64711H40100H000 | AXLE,REAR | 1 | |

4

Fig. 48

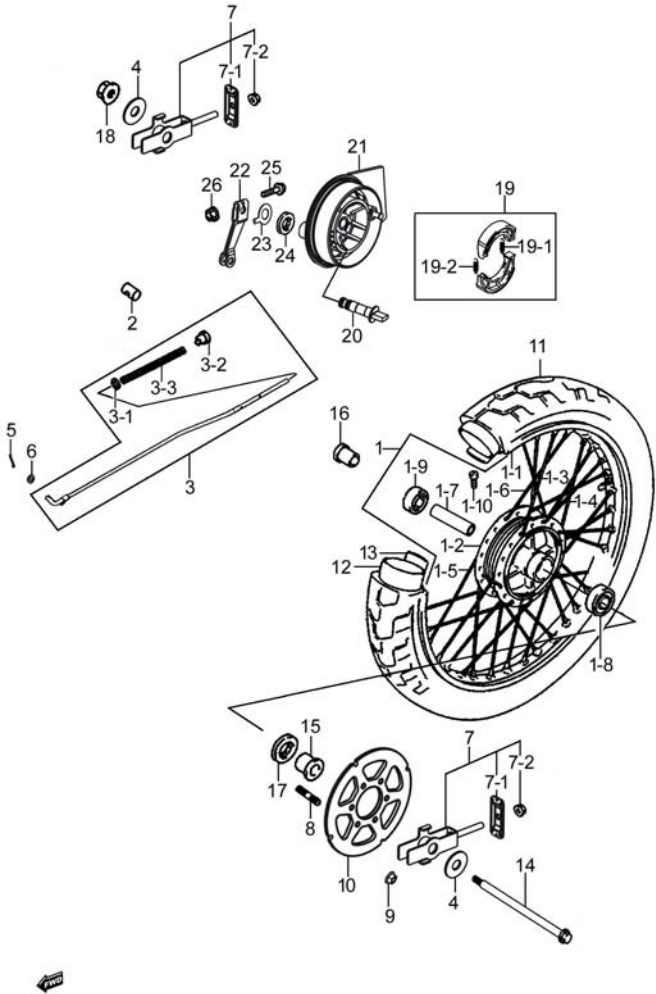


Fig.48 REAR WHEEL (P12-S460-0004)

| REF. No. | PART No. | DESCRIPTION | Q' TY | REMARKS |
|----------|-----------------|-------------------------------|-------|---------|
| 15 | 64751H40101H000 | SPACER, REAR AXLE, L | 1 | |
| 16 | 64741H40101H000 | SPACER, REAR AXLE, R | 1 | |
| 17 | 09283-25111-000 | SEAL, OIL | 1 | |
| 18 | 08319-3114A-000 | U-NUT | 1 | |
| 19 | 64410H40Y00H000 | SHOE COMP, BRAKE | 1 | |
| 19-1 | 55421H40100H000 | SPRING, BRAKE SHOE | 1 | |
| 19-2 | 55421H40110H000 | SPRING, BRAKE SHOE | 1 | |
| 20 | 54441H40110H000 | CAM, BRAKE | 1 | |
| 21 | 64210H40100H000 | PANEL COMP, REAR BRAKE | 1 | |
| 22 | 64451H40100H000 | LEVER, REAR BRAKE CAM | 1 | |
| 23 | 54492H40100H000 | PLATE, FR BK LINING INDICATOR | 1 | |
| 24 | 54443H85300H000 | SEAL, BRAKE CAM DUST | 2 | |
| 25 | 01550-0635A-000 | BOLT | 1 | |
| 26 | 08316-1006A-000 | NUT | 1 | |

Fig. 49

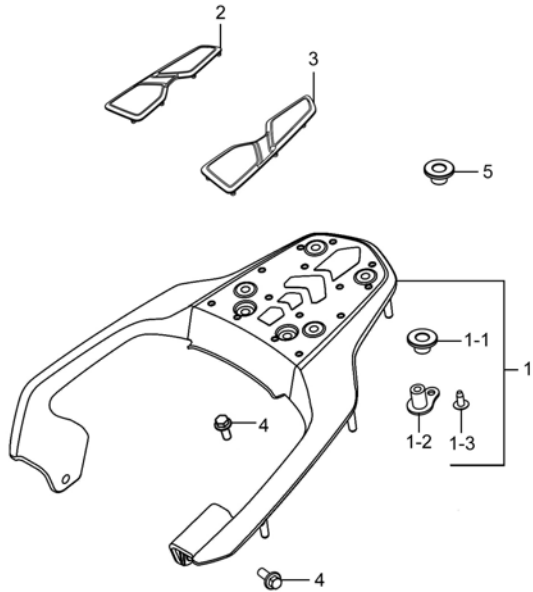


Fig.49 CARRIER (P12-S480-0004)

| REF. No. | PART No. | DESCRIPTION | Q'TY | REMARKS |
|----------|-----------------|-----------------------------------|------|---------|
| 1 | 46310H40101H841 | CARRIER COMP, REAR (841) | 1 | |
| 1-1 | 46212H40101H000 | COLLAR NO. 1 | 2 | |
| 1-2 | 14413H40100H000 | SPACER | 4 | |
| 1-3 | 03541-0512A-000 | CROSS RECESSED HEAD TAPPING SCREW | 4 | |
| 2 | 46313H40100H000 | CUSHION, RR CARRIER, R | 1 | |
| 3 | 46314H40100H000 | CUSHION, RR CARRIER, L | 1 | |
| 4 | 01550-0825A-000 | BOLTS, HEXAGON HEAD FLANGE | 4 | |
| 5 | 46212H40101H000 | COLLAR NO. 1 | 2 | |

4



| PART NO. | FIG. NO. – REF. NO. | PART NO. | FIG. NO. – REF. NO. | PART NO. | FIG. NO. – REF. NO. | PART NO. | FIG. NO. – REF. NO. |
|-----------------|------------------------|-----------------|------------------------|-----------------|------------------------|-----------------|------------------------|
| 00000 | | 01550-0612A-000 | 47-2 | 03541-0412A-000 | 23-5 | 08319-3110A-000 | 03-14 |
| | | 01550-0616A-000 | 10-3 | 03541-0416A-000 | 26-7 | 08319-3110A-000 | 28-4 |
| | | 01550-0616A-000 | 17-4 | 03541-0512A-000 | 49-1-3 | 08319-3110A-000 | 47-11 |
| | | 01550-0616A-000 | 21-4 | 03541-0516A-000 | 10-9 | 08319-3112A-000 | 42-4 |
| | | 01550-0616A-000 | 03-19 | 03541-0516A-000 | 22-6 | 08319-3114A-000 | 46-11 |
| 01500-0820A-000 | 16-18 | 01550-0616A-000 | 27-19 | 04111-2015A-000 | 48-5 | 08319-3114A-000 | 48-18 |
| 01500-0825A-000 | 17-6 | 01550-0616A-000 | 36-11 | 04111-2020A-000 | 29-6 | 08322-0106A-000 | 48-3-1 |
| 01547-0512A-000 | 01-13 | 01550-0622A-000 | 14-2-1 | 04111-2020A-000 | 29-7-6 | 08322-0106A-000 | 48-6 |
| 01547-0612A-000 | 12-23 | 01550-0625A-000 | 28-15 | 04111-2020A-000 | 29-8-6 | 08331-31149-000 | 16-14-2 |
| 01547-0612A-000 | 01-10 | 01550-0625A-000 | 36-3 | 04111-2525A-000 | 28-13 | 08331-31289-000 | 05-19-7 |
| 01547-0614A-000 | 07-5 | 01550-0625A-000 | 37-9 | 07130-0512A-000 | 22-4 | 08361-3506A-000 | 21-2 |
| 01547-0616A-000 | 12-1 | 01550-0635A-000 | 47-6 | 07130-0610A-000 | 15-10 | 09100H05005H000 | 19-2 |
| 01547-0616A-000 | 03-6 | 01550-0635A-000 | 48-25 | 07130-0625A-000 | 19-3 | 09100H06022H000 | 16-10 |
| 01547-0620A-000 | 08-9 | 01550-0816A-000 | 27-10 | 07130-0825A-000 | 11-2 | 09100H06022H000 | 16-13 |
| 01547-0620A-000 | 01-18 | 01550-0820A-000 | 39-5 | 07130-0825A-000 | 22-8 | 09103-08530-000 | 03-15 |
| 01547-0625A-000 | 08-6 | 01550-0825A-000 | 29-9 | 08133-62027-000 | 48-1-9 | 09103H05001H000 | 07-3 |
| 01547-0625A-000 | 12-11 | 01550-0825A-000 | 49-4 | 08133-6301B-000 | 42-1-6 | 09103H06020H000 | 29-1-5 |
| 01547-0628B-000 | 35-5-7 | 01550-0830A-000 | 11-9 | 08134-63027-000 | 48-1-8 | 09103H06020H000 | 29-2-5 |
| 01547-0630A-000 | 13-2 | 01550-0835A-000 | 41-7 | 08211-06141-000 | 03-20 | 09103H06025H000 | 01-6 |
| 01547-0630A-000 | 18-2 | 01550-0840A-000 | 11-15 | 08211-14321-000 | 46-7 | 09103H08010H000 | 03-16 |
| 01547-0630A-000 | 04-5 | 01550-0840A-000 | 43-2 | 08310-0006A-000 | 01-22 | 09103H08010H000 | 27-7 |
| 01547-0630A-000 | 01-9 | 01550-0845A-000 | 11-5 | 08310-0006A-000 | 28-11 | 09103H08012H000 | 27-16 |
| 01547-0635A-000 | 04-10 | 01550-0875A-000 | 27-5 | 08310-0010A-000 | 24-3 | 09103H08021H000 | 41-6 |
| 01547-0640A-000 | 03-2 | 02112-0410B-000 | 35-5-9 | 08316-1006A-000 | 12-12 | 09103H10003H000 | 03-13 |
| 01547-0640A-000 | 04-4 | 02112-0418A-000 | 16-22 | 08316-1006A-000 | 30-23 | 09108H06009H000 | 01-21 |
| 01547-0645A-000 | 03-3 | 02112-0612A-000 | 46-10 | 08316-1006A-000 | 31-8 | 09108H08021H000 | 02-4 |
| 01547-0645A-000 | 04-9 | 02112-1520A-000 | 21-9 | 08316-1006A-000 | 48-26 | 09111-06061-000 | 10-4 |
| 01547-0670A-000 | 03-4 | 02122-0512A-000 | 05-16 | 08316-1014A-000 | 19-4 | 09111-06061-000 | 36-13 |
| 01550-0610A-000 | 26-8 | 02142-0512A-000 | 10-1-7 | 08319-2106B-000 | 35-5-6 | 09111-06061-000 | 36-19 |
| 01550-0610A-000 | 34-8 | 02142-0514B-000 | 30-19 | 08319-3106A-000 | 39-3 | 09111-06106-000 | 30-18 |
| 01550-0612A-000 | 26-22 | 02142-0516A-000 | 10-1-6 | 08319-3108A-000 | 11-8 | 09111H06010H000 | 47-5 |
| 01550-0612A-000 | 27-13 | 03241-0314B-000 | 22-1-4 | 08319-3108A-000 | 03-17 | 09111H06016H000 | 30-22 |
| 01550-0612A-000 | 30-11 | 03241-0516A-000 | 36-15 | 08319-3108A-000 | 27-6 | 09111H10009H000 | 28-3 |
| 01550-0612A-000 | 34-9 | 03241-0516B-000 | 32-6 | 08319-3108A-000 | 48-7-2 | 09116-06167-000 | 30-17 |
| 01550-0612A-000 | 45-6 | 03241-0516B-000 | 37-12 | 08319-3108A-000 | 48-9 | 09116-06167-000 | 33-3 |

| PART NO. | FIG. NO. – REF. NO. | PART NO. | FIG. NO. – REF. NO. | PART NO. | FIG. NO. – REF. NO. | PART NO. | FIG. NO. – REF. NO. |
|-----------------|------------------------|-----------------|------------------------|-----------------|------------------------|-----------------|------------------------|
| 09125H06002H000 | 08-7-1 | 09160H20001H000 | 15-1-10 | 09206H08004H000 | 04-3 | 09320H08001H000 | 37-7 |
| 09128-06006-000 | 31-5 | 09160H20001H000 | 15-5-11 | 09206H10006H000 | 01-3 | 09320H08005H000 | 30-14 |
| 09136H04003H000 | 37-4 | 09160H22002H000 | 41-9 | 09206H10007H000 | 02-3 | 09320H08005H000 | 36-6 |
| 09136H06003H000 | 21-11 | 09161-10009-000 | 45-5 | 09206H10007H000 | 03-1-1 | 09320H10004H000 | 47-8 |
| 09139-06027-000 | 11-4-2 | 09161H06004H000 | 11-4-4 | 09229H03003H000 | 27-15 | 09320H10023H000 | 11-3-5 |
| 09139-06048-000 | 26-19 | 09164H10001H000 | 07-17 | 09241H08001H000 | 15-5-14 | 09320H12005H000 | 11-11 |
| 09139H06001H000 | 36-9 | 09168-06018-000 | 01-11 | 09247H12105H000 | 03-10 | 09320H20002H000 | 36-2 |
| 09139H06006H000 | 11-3-2 | 09168-12002-000 | 03-11 | 09259H32002H000 | 04-11 | 09321H09002H000 | 11-16 |
| 09148-05077-000 | 36-8 | 09168H06002H000 | 11-3-6 | 09261-02001-000 | 13-5 | 09321H09002H000 | 37-13 |
| 09148-05077-000 | 37-2 | 09168H06002H000 | 11-4-5 | 09262H12009H000 | 15-2 | 09329-10001-000 | 39-1-1 |
| 09148-05077-000 | 40-4 | 09168H06026H000 | 31-6 | 09262H12014H000 | 07-1-1 | 09360-10039-000 | 45-4 |
| 09150H06001H000 | 48-3-2 | 09180-06263-000 | 30-16 | 09262H15018H000 | 05-23 | 09367H08001H000 | 09-9 |
| 09159H14001H000 | 05-21 | 09180H06008H000 | 36-5 | 09262H17001H000 | 14-8 | 09380H15002H000 | 17-1-7 |
| 09160-05501-000 | 36-16 | 09180H06010H000 | 29-1-4 | 09262H17007H000 | 15-7 | 09380H16001H000 | 15-15 |
| 09160-06006-000 | 12-13 | 09180H06010H000 | 29-2-4 | 09262H17017H000 | 15-3 | 09380H18002H000 | 15-1-13 |
| 09160-06006-000 | 36-4 | 09180H06033H000 | 33-2 | 09262H20014H000 | 15-6 | 09380H18002H000 | 15-5-12 |
| 09160-06027-000 | 37-10 | 09180H06034H000 | 12-15 | 09263-20041-000 | 46-2 | 09381-14001-000 | 05-4 |
| 09160-06088-000 | 30-24 | 09180H06034H000 | 27-20 | 09264H30001H000 | 05-6 | 09383-05001-000 | 13-4 |
| 09160-06163-000 | 11-4-3 | 09180H06035H000 | 28-16 | 09267-25L01-000 | 41-12 | 09401-08414-000 | 09-2 |
| 09160-06164-000 | 11-3-3 | 09180H06336H000 | 11-3-4 | 09280-24003-000 | 18-1-4 | 09401-09101-000 | 31-4 |
| 09160-08153-000 | 29-5 | 09180H07005H000 | 47-7 | 09280-32006-000 | 04-12 | 09401-10410-000 | 09-3 |
| 09160-08153-000 | 29-7-5 | 09180H08015H000 | 11-12 | 09280H09011H000 | 08-7-2 | 09401-15404-000 | 12-8 |
| 09160-08153-000 | 29-8-5 | 09180H08026H000 | 27-17 | 09280H10002H000 | 12-2 | 09401-17401-000 | 12-9 |
| 09160H08008H000 | 11-17 | 09180H10002H000 | 06-3 | 09280H13010H000 | 04-14 | 09401H07201H000 | 12-5 |
| 09160H08017H000 | 11-10 | 09180H15019H000 | 05-24 | 09280H18002H000 | 04-18-1 | 09401H08302H000 | 31-3 |
| 09160H12014H000 | 15-1-11 | 09180H17005H000 | 14-3 | 09280H19001H000 | 16-21 | 09401H12302H000 | 12-21 |
| 09160H12016H000 | 01-5 | 09181H14004H000 | 16-14-3 | 09280H34002H000 | 01-17 | 09401H13002H000 | 12-18 |
| 09160H12021H000 | 07-16 | 09181H16001H000 | 07-15 | 09283-25111-000 | 48-17 | 09401H14302H000 | 10-1-5 |
| 09160H14006H000 | 17-1-2 | 09181H28001H000 | 05-19-4 | 09283H14003H000 | 16-16 | 09401H15202H000 | 10-7 |
| 09160H16001H000 | 17-1-5 | 09181H28004H000 | 05-19-6 | 09283H16001H000 | 17-2 | 09401H15202H000 | 12-20 |
| 09160H16004H000 | 05-18 | 09200-08002-000 | 29-7-4 | 09283H20013H000 | 15-4 | 09401H21401H000 | 10-1-2 |
| 09160H17001H000 | 28-12 | 09200-08002-000 | 29-8-4 | 09285-20005-000 | 46-3 | 09404-06030-000 | 26-6 |
| 09160H17002H000 | 15-1-12 | 09200H08004H000 | 29-4 | 09289H05004H000 | 07-14 | 09404-06429-000 | 26-9 |
| 09160H17002H000 | 15-5-13 | 09205H03001H000 | 04-21 | 09320-08051-000 | 12-14 | 09407-10404-000 | 26-14 |
| 09160H17003H000 | 15-14 | 09206H08002H000 | 04-16 | 09320-09016-000 | 30-15 | 09407-12402-000 | 26-4 |

| PART NO. | FIG. NO. – REF. NO. | PART NO. | FIG. NO. – REF. NO. | PART NO. | FIG. NO. – REF. NO. | PART NO. | FIG. NO. – REF. NO. |
|-----------------|------------------------|-----------------|------------------------|-----------------|------------------------|-----------------|------------------------|
| 09407-12402-000 | 45-7 | 11171H2J021H000 | 01-7 | 12760H3J010H000 | 08-1 | 13383H40020H000 | 09-1-2 |
| 09420H04002H000 | 05-5-1 | 11173H3J011H000 | 01-8 | 12771H3J000H000 | 08-3 | 13385H12600H000 | 09-1-6 |
| 09420H04005H000 | 05-13 | 11184H3J000H000 | 01-14 | 12811H3J010H000 | 08-2 | 13388H12600H000 | 09-1-20 |
| 09421H04001H000 | 05-12 | 11210H3J0B0H0A0 | 02-1 | 12830H3JY01H000 | 08-7 | 13389H12600H000 | 09-1-3 |
| 09440H04030H000 | 16-6 | 11241H3J010H000 | 02-2 | 12837H21D20H000 | 08-8 | 13389H12610H000 | 09-1-17 |
| 09440H07004H000 | 05-19-3 | 11300H3JY71H000 | 03-1 | 12840H3J001H000 | 07-6 | 13413H40010H000 | 09-1-18 |
| 09440H09007H000 | 48-3-3 | 11327H3J000H000 | 08-5 | 12842H3J000H000 | 07-6-1 | 13551H40010H000 | 09-1-1 |
| 09443H08001H000 | 28-8 | 11327H3J010H000 | 08-4 | 12852H33000H000 | 07-6-2 | 13573H12600H000 | 09-1-4 |
| 09443H14004H000 | 28-6 | 11340H40000H000 | 04-1 | 12861H3J000H000 | 07-7 | 13683H12601H000 | 09-4 |
| 09448H14005H000 | 29-3 | 11351H3J010H000 | 04-7 | 12911H3J010H000 | 07-8 | 13684H40010H000 | 09-8 |
| 09448H15001H000 | 04-20 | 11353H3J010H000 | 04-13 | 12912H3J030H000 | 07-9 | 13687H40020H000 | 09-6 |
| 09471-12081-000 | 23-1-5 | 11361H40000H000 | 04-15 | 12921H3R000H000 | 07-12 | 13688H12601H000 | 09-7 |
| 09471-12128-000 | 25-1-3 | 11362H3J010H000 | 04-17 | 12922H3R000H000 | 07-13 | 13700H40000H000 | 10-1 |
| 09471H12001H000 | 23-1-4 | 11421H3R000H000 | 04-6 | 12931H3R000H000 | 07-10 | 13723H40100H000 | 10-1-13 |
| 09471H12019H000 | 24-1-2 | 11482H3J012H000 | 04-2 | 12932H50100H000 | 07-11 | 13724H40100H000 | 10-1-11 |
| 09471H12019H000 | 24-2-2 | 11483H3J011H000 | 04-8 | 13110H40000H000 | 01-16 | 13741H40000H000 | 10-1-14 |
| 09471H12019H000 | 24-5-2 | 12111H3J020H0A0 | 05-1 | 13112H3J010H000 | 01-19 | 13766H40100H000 | 10-8 |
| 09471H12019H000 | 24-6-2 | 12140H3E010H000 | 05-2 | 13113H3E001H000 | 01-20 | 13781H40100H000 | 10-1-8 |
| 09482H00010H000 | 01-15 | 12151H3J000H000 | 05-3 | 13170H2G002H000 | 10-1-3 | 13787H40100H000 | 10-5 |
| 09491H21040H000 | 09-1-7 | 12200H3J031H000 | 05-5 | 13200H40020H000 | 09-1 | 13810H40100H000 | 10-1-12 |
| 09492H38040H000 | 09-1-8 | 12543H3J000H000 | 03-7 | 13241H12600H000 | 09-1-5 | 13851H40100H000 | 10-6 |
| 09800H20037H000 | 36-17 | 12544H3J000H000 | 03-8 | 13247H12600H000 | 09-1-16 | 13878H52100H000 | 10-1-4 |
| | | 12545H3J010H000 | 03-9 | 13250H12600H000 | 09-1-13 | 13886H40000H000 | 10-1-1 |
| | | 12547H3J000H000 | 03-5 | 13251H12600H000 | 09-1-15 | 13891H40000H000 | 10-1-9 |
| | | 12611H3J000H000 | 06-2 | 13253H12600H000 | 09-1-19 | 13898H40100H000 | 10-1-10 |
| | | 12620H3J000H000 | 06-1 | 13254H12600H000 | 09-1-14 | 14015H40001H000 | 11-4 |
| | | 12651H3J020H000 | 05-22 | 13261H12600H000 | 09-1-22 | 14031H40010H000 | 11-3 |
| | | 12661H3J001H000 | 05-7 | 13267H40010H000 | 09-1-24 | 14181H11200H000 | 11-1 |
| | | 12670H3J000H000 | 05-19 | 13268H12600H000 | 09-1-10 | 14412H40100H000 | 11-6 |
| | | 12679H3J000H000 | 05-19-1 | 13279H40010H000 | 09-1-9 | 14413H40100H000 | 49-1-2 |
| 11091H3J010H000 | 04-18 | 12683H36000H000 | 06-4 | 13286H40010H000 | 09-5 | 14414H40100H000 | 11-7 |
| 11110H3J0H2H000 | 01-1 | 12686H3J000H000 | 05-19-2 | 13295H12600H000 | 09-1-12 | 14459H40100H000 | 11-14 |
| 11121H3J020H000 | 01-12 | 12687H3J000H000 | 05-19-5 | 13346H40010H000 | 09-1-21 | 14771H40100H000 | 11-13 |
| 11141H3J030H000 | 01-2 | 12710H3J053H000 | 07-1 | 13370H40010H000 | 09-1-23 | 14781H40100H000 | 11-4-1 |
| 11151H3J010H000 | 01-4 | 12741H3J000H000 | 07-2 | 13382H12600H000 | 09-1-11 | 14791H40100H000 | 11-3-1 |

5

| PART NO. | FIG. NO. – REF. NO. | PART NO. | FIG. NO. – REF. NO. | PART NO. | FIG. NO. – REF. NO. | PART NO. | FIG. NO. – REF. NO. |
|-----------------|------------------------|-----------------|------------------------|-----------------|------------------------|-----------------|------------------------|
| 14793H40100H000 | 11-3-7 | 21251H3J000H000 | 14-4 | 24331H3J010H000 | 15-5-6 | 27600H3R000H130 | 15-11 |
| 16052H3D010H000 | 05-14 | 21324H3J000H000 | 05-20 | 24332H3J000H000 | 15-5-7 | | |
| 16330H3J021H000 | 13-3 | 21324H3J000H000 | 14-6 | 24341H3J010H000 | 15-5-8 | | |
| 16400H3J000H000 | 13-1 | 21346H33000H000 | 05-17 | 24351H3J010H000 | 15-5-9 | | |
| 16422-20E00-000 | 13-6 | 21346H3J000H000 | 14-7 | 24741-20A10-000 | 07-4 | | |
| 16514H3D000H000 | 05-14-1 | 21410H3J030H000 | 14-2 | 24741H3J000H000 | 03-18 | 30000 | |
| 16520-09410-000 | 03-12 | 21411H3G000H000 | 14-2-8 | 25211H3J000H000 | 16-1 | | |
| 16520H33040H000 | 05-14-2 | 21413H3D010H000 | 14-2-3 | 25231H3J000H000 | 16-2 | | |
| 16521H33040H000 | 05-14-2-2 | 21441H36030H000 | 14-2-5 | 25311H3J000H000 | 16-5 | | |
| 16531H33040H000 | 05-14-2-4 | 21441H3J000H000 | 14-2-6 | 25314H3E000H000 | 16-7 | | |
| 16532H33040H000 | 05-14-2-1 | 21451H3E010H000 | 14-2-7 | 25335H3J000H000 | 16-9 | 31100H3J022H000 | 18-1 |
| 16551H33040H000 | 05-14-2-3 | 21462H3E000H000 | 14-2-4 | 25350H3J000H000 | 16-11 | 31133H3J000H000 | 18-1-1-1 |
| 16561H3E000H000 | 05-15 | 21471H3G000H000 | 14-2-2 | 25351H3J000H000 | 16-12 | 31135-05530-000 | 18-1-1-2 |
| 18410H40000H000 | 12-3 | 21481H3J000H000 | 14-5 | 25380H3J000H000 | 16-8 | 31153H3J000H000 | 18-1-3 |
| 18450H2G110H000 | 12-6 | 23131H3J010H000 | 14-9 | 25411H3J000H000 | 16-3 | 31156-05530-000 | 18-1-7 |
| 18461H40000H000 | 12-10 | 23270H3J010H000 | 04-19 | 25421H3J000H000 | 16-4 | 31175H3J001H000 | 18-1-1 |
| 18463H40000H000 | 12-4 | 23285H35010H000 | 04-22 | 25500H3J000H000 | 16-14 | 31264-05530-000 | 18-1-5 |
| 18610H40000H000 | 12-7 | 24102H3J040H000 | 15-1 | 25515H3J000H000 | 16-14-4 | 31281H3J000H000 | 18-1-6 |
| 18711H40000H000 | 12-22 | 24103H3J030H000 | 15-5 | 25518H3J000H000 | 16-14-1 | 31800H73101H000 | 21-1 |
| 18712H40000H000 | 12-19 | 24121H3J000H000 | 15-1-1 | 25600H40100H000 | 16-17 | 32100H3J000H000 | 19-1 |
| 18715H40000H000 | 12-17 | 24125H3J000H000 | 15-1-2 | 25652-20C00-000 | 16-17-1 | 32101H3J000H000 | 19-1-1 |
| | | 24131H3R000H000 | 15-5-1 | 25671H3J000H000 | 16-15 | 32102H3J000H000 | 19-1-2 |
| | | 24221H3J010H000 | 15-1-3 | 26210H3J000H000 | 17-1 | 32115H3J010H000 | 19-5 |
| | | 24231H3J010H000 | 15-1-4 | 26211H3J000H000 | 17-1-1 | 32800H51001H000 | 21-3 |
| | | 24232H3J000H000 | 15-1-9 | 26212H3J000H000 | 17-1-8 | 32831H40100H000 | 21-5 |
| 20000 | | 24232H3J000H000 | 15-5-10 | 26221H3J000H000 | 17-1-9 | 32900H40001H000 | 21-6 |
| | | 24241H3J020H000 | 15-1-5 | 26226H3J000H000 | 17-1-3 | 33410H40001H000 | 21-8 |
| | | 24242H3J000H000 | 15-1-6 | 26241H3J000H000 | 17-1-6 | 33414H40000H000 | 21-10 |
| | | 24251H3J020H000 | 15-1-7 | 26251H3J000H000 | 17-1-4 | 33510H33811H000 | 21-8-1 |
| | | 24252H3J000H000 | 15-1-8 | 26256H3J000H000 | 17-3 | 33541H2M100H000 | 21-8-2 |
| 21111H3J020H000 | 05-11 | 24311H3J000H000 | 15-5-2 | 26261H3J000H000 | 15-12 | 33542H05500H000 | 21-8-3 |
| 21112H3J010H000 | 05-9 | 24312H3J000H000 | 15-5-3 | 26300H40100H000 | 17-5 | 33620H2C010H000 | 20-1 |
| 21113H3J000H000 | 05-8 | 24312H3J000H000 | 15-13 | 26352-01000-000 | 17-5-1 | 33810H3J020H000 | 18-1-2 |
| 21114H3J010H000 | 05-10 | 24321H3J010H000 | 15-5-4 | 27511H3J000H000 | 15-8 | 33860H40100H000 | 20-2 |
| 21200H3J040H000 | 14-1 | 24322H3J000H000 | 15-5-5 | 27521H33010H000 | 15-9 | 34100H40010H000 | 22-1 |

| PART NO. | FIG. NO. – REF. NO. | PART NO. | FIG. NO. – REF. NO. | PART NO. | FIG. NO. – REF. NO. | PART NO. | FIG. NO. – REF. NO. | |
|-----------------|------------------------|-----------------|------------------------|-----------------|------------------------|-----------------|------------------------|-------|
| 34111H40010H000 | 22-1-2 | 35970H2C001H000 | 25-4 | 41970H40000H000 | 27-3 | 44018H4010HHF05 | 30-6 | |
| 34124H40010H000 | 22-1-3 | 36610H40001H000 | 26-1 | 41980H40100H000 | 27-4 | 44110H40000H210 | 30-1 | |
| 34150H40010H000 | 22-1-1 | 36611H40101H000 | 26-16 | 41992H40100H000 | 27-8 | 44110H40000H501 | 30-1 | |
| 34810H40000H000 | 31-7 | 36618H2A000H000 | 26-11 | 42241H40100H000 | 28-2 | 44110H40000H623 | 30-1 | |
| 34981-26H00-000 | 22-7 | 36618H2D000H000 | 26-12 | 42310H40100H000 | 28-1 | 44130H40100H000 | 30-9 | |
| 34990H2A410H000 | 22-3 | 36618H79201H000 | 26-15 | 42336H40100H000 | 28-14 | 44162H40100H000 | 30-3 | |
| 34997H40100H000 | 22-5 | 36651-12F10-000 | 26-10 | 43031H4010BH000 | 48-3 | 44173H40100H000 | 30-5-1 | |
| 35100H40100H000 | 23-1 | 36651-26H00-000 | 26-24 | 43110H40110H000 | 28-5 | 44183H40100H000 | 30-6-1 | |
| 35121H40100H000 | 23-1-1 | 36651-26H10-000 | 26-13 | 43116H22500H000 | 28-9 | 44200H2C100H000 | 30-2 | |
| 35151-21J00-000 | 22-2 | 36651-26H50-000 | 26-5 | 43142H21302H000 | 28-7 | 44256H22500H000 | 30-5-2 | |
| 35151H40100H000 | 23-2 | 36720H2C100H000 | 26-1-1 | 43159-45F00-000 | 28-10 | 44256H22500H000 | 30-6-2 | |
| 35154H40100H000 | 23-3 | 36990-32G10-000 | 26-3 | 43321H11200H000 | 48-2 | 44256H22500H000 | 30-12 | |
| 35157H22501H000 | 10-2 | 36990-32G20-000 | 26-2 | 43501H40102H000 | 29-1 | 44256H22500H000 | 37-15 | |
| 35157H22501H000 | 21-7 | 36990-32G30-000 | 26-17 | 43502H40102H000 | 29-2 | 44256H40100H000 | 30-5-3 | |
| 35157H22501H000 | 36-10 | 37011H2F020H000 | 26-23 | 43510H40101H000 | 29-1-1 | 44256H40100H000 | 30-6-3 | |
| 35171H40100H000 | 23-1-3 | 37100H2F020H000 | 26-18 | 43520H40101H000 | 29-2-1 | 44256H40120H000 | 30-31 | |
| 35174H7J000H000 | 23-1-2 | 37200H40001H000 | 35-1 | 43551H40100H000 | 29-1-2 | 44256H56010H000 | 34-10 | |
| 35194H40100H000 | 23-4 | 37400H40101H000 | 35-2 | 43551H40100H000 | 29-2-2 | 44259H40100H000 | 30-30 | |
| 35382-48H00-000 | 37-6 | 37720H3J010H000 | 16-19 | 43581H40100H000 | 29-1-3 | 44262H40100H000 | 30-4 | |
| 35601H40100H000 | 24-1 | 37725H3J000H000 | 16-20 | 43581H40100H000 | 29-2-3 | 44271H40100H000 | 30-7 | |
| 35602H40100H000 | 24-2 | 37740H40000H000 | 26-20 | 43600H40100H000 | 29-7 | 44281H40100H000 | 30-20 | |
| 35603H2C000H000 | 24-5 | 38500H2H000H000 | 26-21 | 43610H40100H000 | 29-7-2 | 44281H40110H000 | 30-8 | |
| 35604H2C000H000 | 24-6 | 38610H11222H000 | 24-8 | 43612H40100H000 | 29-7-3 | 44283H40101H000 | 30-26 | |
| 35610H2C000H000 | 24-1-1 | | | 43620H40100H000 | 29-7-1 | 44284H40101H000 | 30-27 | |
| 35610H2C000H000 | 24-6-1 | | | 43631H40100H000 | 29-7-7 | 44285H40101H000 | 30-28 | |
| 35616H11A01H000 | 24-4 | | | 43631H40100H000 | 29-8-7 | 44286H2F000H000 | 30-29 | |
| 35616H40100H000 | 24-7 | | | 43700H40100H000 | 29-8 | 44300H2F300H000 | 31-1 | |
| 35630H2C000H000 | 24-2-1 | 40000 | | 43710H40100H000 | 29-8-2 | 44330H12900H000 | 12-16 | |
| 35630H2C000H000 | 24-5-1 | | | 43712H40100H000 | 29-8-3 | 44421H40000H000 | 31-2 | |
| 35710H40100H000 | 25-1 | | | 43720H40100H000 | 29-8-1 | 44423H40101H000 | 30-25 | |
| 35718H40100H000 | 25-1-2 | | 41100H40000H000 | 27-1 | 44017H4010HHF02 | 30-5 | 44542H40100H000 | 30-21 |
| 35720H40100H000 | 25-1-1 | | 41540H40100H000 | 27-11 | 44017H4010HHF04 | 30-5 | 45100H40100H000 | 39-1 |
| 35910H40102H000 | 25-3 | 41540H40110H000 | 27-12 | 44017H4010HHF05 | 30-5 | 45148H52100H000 | 39-1-2 | |
| 35950H2F000H000 | 41-1-4 | 41762H40100H000 | 27-2 | 44018H4010HHF02 | 30-6 | 45149H22500H000 | 39-1-3 | |
| 35950H2F000H000 | 41-2-4 | 41941H40110H000 | 27-9 | 44018H4010HHF04 | 30-6 | 45160H40100H000 | 39-1-4 | |

5

| PART NO. | FIG. NO. – REF. NO. | PART NO. | FIG. NO. – REF. NO. | PART NO. | FIG. NO. – REF. NO. | PART NO. | FIG. NO. – REF. NO. |
|-----------------|------------------------|-----------------|------------------------|-----------------|------------------------|-----------------|------------------------|
| 45219-29J00-000 | 39-4 | 51103H40130H000 | 41-1 | 51189-12FH0-000 | 41-2-7 | 55421H40100H000 | 48-19-1 |
| 45315H40100H000 | 39-2 | 51104H40130H000 | 41-2 | 51192-12FH0-000 | 41-1-10 | 55421H40110H000 | 48-19-2 |
| 45511H40100H521 | 40-1 | 51110H40100H000 | 41-1-12 | 51192-12FH0-000 | 41-2-10 | 56110H40102H000 | 34-1 |
| 45511H40100H913 | 40-1 | 51110H40100H000 | 41-2-12 | 51195-12FH0-000 | 41-1-18 | 56211H40101H000 | 41-5 |
| 45512H40100H521 | 40-2 | 51117-12FH0-000 | 41-1-8 | 51195-12FH0-000 | 41-2-18 | 56321H40101H000 | 37-5 |
| 45512H40100H913 | 40-2 | 51117-12FH0-000 | 41-2-8 | 51196-12FH0-000 | 41-1-15 | 56500H2A260H000 | 34-2 |
| 46212H40101H000 | 49-1-1 | 51130H40120H000 | 41-1-21 | 51196-12FH0-000 | 41-2-15 | 56600H2A260H000 | 34-3 |
| 46212H40101H000 | 49-5 | 51140H40110H000 | 41-2-21 | 51311H40102H000 | 41-3 | 57110H40001H000 | 35-4 |
| 46310H40101H841 | 49-1 | 51146H40100H000 | 41-1-17 | 51353H11200H000 | 41-8 | 57211H40100H000 | 35-3 |
| 46313H40100H000 | 49-2 | 51146H40100H000 | 41-2-17 | 51410H40102H000 | 41-4 | 57321-45F20-000 | 44-1-3 |
| 46314H40100H000 | 49-3 | 51147-05320-000 | 41-1-20 | 51544H2A200H000 | 37-8 | 57421H40110H000 | 44-1-2 |
| 47012H4010AHF02 | 32-4 | 51147-05320-000 | 41-2-20 | 51589H22500H000 | 37-11 | 57431-45C01-000 | 35-5-5 |
| 47012H4010AHF03 | 32-4 | 51148H40100H000 | 41-1-19 | 51631-48H00-000 | 41-10 | 57433-09F00-000 | 44-1-4 |
| 47012H4010AHF04 | 32-4 | 51148H40100H000 | 41-2-19 | 51643H40100H000 | 41-11 | 57441H2J000H000 | 35-5-3 |
| 47022H4010AHF02 | 32-2 | 51152-12FH0-000 | 41-1-14 | 51644H40100H000 | 41-13 | 57442-45C00-000 | 35-5-4 |
| 47022H4010AHF03 | 32-2 | 51152-12FH0-000 | 41-2-14 | 53111H40100H521 | 33-1 | 57460-17C11-000 | 44-1-5 |
| 47022H4010AHF04 | 32-2 | 51153H40100H000 | 41-1-1 | 53111H40100H913 | 33-1 | 57500H2J001H000 | 35-5 |
| 47111H40100H521 | 32-3 | 51153H40100H000 | 41-2-1 | 54111H40100H000 | 42-1-2 | 57511H2J000H000 | 35-5-2 |
| 47112H40100H521 | 32-4-1 | 51156-12FH0-000 | 41-1-2 | 54441H40110H000 | 48-20 | 57560-28G11-000 | 35-5-8 |
| 47112H40100H913 | 32-4-1 | 51156-12FH0-000 | 41-2-2 | 54443H85300H000 | 48-24 | 57621H2J000H000 | 35-5-1 |
| 47211H40100H521 | 32-1 | 51168H40100H000 | 41-1-13 | 54492H40100H000 | 48-23 | 57661H2C100H000 | 35-6 |
| 47212H40100H521 | 32-2-1 | 51168H40100H000 | 41-2-13 | 54711H40100H000 | 42-7 | 58200H40101H000 | 34-4 |
| 47212H40100H913 | 32-2-1 | 51171H40100H000 | 41-1-11 | 54731H40100H000 | 42-1-5 | 58300H40010H000 | 34-5 |
| 47312H02100H000 | 30-13 | 51171H40100H000 | 41-2-11 | 54741H40101H000 | 42-6 | 58620H40000H000 | 34-6 |
| 47312H02100H000 | 32-7 | 51173H40100H000 | 41-1-3 | 54742H2J000H000 | 42-5 | 58620H40110H000 | 34-7 |
| 47430H40101H000 | 27-18 | 51173H40100H000 | 41-2-3 | 55033H40100H000 | 42-1 | 59064H2G11CH000 | 44-1 |
| 47846H40100H000 | 32-8 | 51174H40110H000 | 41-1-6 | 55100H40100H000 | 42-8 | 59121-26F10-000 | 43-1-2 |
| 48291-32GH0-000 | 32-9 | 51174H40110H000 | 41-2-6 | 55156-26F10-000 | 43-1-1 | 59211H40100H000 | 42-3 |
| | | 51175H40110H000 | 41-1-5 | 55200H40100H000 | 42-9 | 59246H40100H000 | 45-2 |
| | | 51175H40110H000 | 41-2-5 | 55261H40100H000 | 42-10 | 59268H40110H000 | 45-3 |
| 50000 | | 51176H40101H000 | 41-1-9 | 55311H40100H000 | 42-1-1 | 59300H2JY10H000 | 43-1-3 |
| | | 51176H40101H000 | 41-2-9 | 55321H40100H000 | 42-1-4 | 59300H40100H000 | 43-1 |
| | | 51177H40100H000 | 41-1-16 | 55322H40100H000 | 42-1-3 | 59421H40100H000 | 42-2 |
| | | 51177H40100H000 | 41-2-16 | 55326H11200H000 | 42-1-7 | 59480H40100H000 | 45-1 |
| | | 51189-12FH0-000 | 41-1-7 | 55326H11200H000 | 48-1-10 | 59600H2G111H000 | 44-1-1 |

| PART NO. | FIG. NO. – REF. NO. | PART NO. | FIG. NO. – REF. NO. | PART NO. | FIG. NO. – REF. NO. |
|-----------------|------------------------|-----------------|------------------------|-----------------|------------------------|
| 59600H36810H000 | 44-1-1-7 | 63125H40000H000 | 36-18 | 68167H40100HTL1 | 32-2-2 |
| 59666-44300-000 | 44-1-1-7-1 | 64110H40102H000 | 48-1-2 | 68167H40100HTL2 | 32-2-2 |
| 59667-053B0-000 | 44-1-1-1 | 64210H40100H000 | 48-21 | 68225H40130HS52 | 30-5-4 |
| 59668H2G120H000 | 44-1-1-2 | 64410H40Y00H000 | 48-19 | 68225H40130HTL1 | 30-5-4 |
| 59669H2A010H000 | 44-1-1-3 | 64451H40100H000 | 48-22 | 68225H40130HTL2 | 30-5-4 |
| 59671H2G100H000 | 35-5-10 | 64511H40100H000 | 48-10 | 68226H40130HS52 | 30-6-4 |
| 59671H2G110H000 | 44-1-1-5 | 64613H40100H000 | 48-8 | 68226H40130HTL1 | 30-6-4 |
| 59675H2A000H000 | 44-1-1-6 | 64711H40100H000 | 48-14 | 68226H40130HTL2 | 30-6-4 |
| 59689H2G120H000 | 44-1-1-4 | 64712H40100H000 | 48-4 | 68281H40100HSIL | 37-14 |
| | | 64731H40100H000 | 48-1-7 | 68311H56110H000 | 27-14 |
| 60000 | | 64741H40101H000 | 48-16 | 68319H40000H000 | 38-1 |
| | | 64751H40101H000 | 48-15 | 68332H40190H000 | 38-3 |
| | | 65032H40100H000 | 48-1 | 68391H40010H000 | 38-4 |
| | | 65100H40101H000 | 48-11 | | |
| | | 65200H40100H000 | 48-12 | | |
| 61041H4010AH000 | 48-7 | 65261H40100H000 | 48-13 | 90000 | |
| 61100H40101H000 | 46-1 | 65311H40100H000 | 48-1-1 | | |
| 61149H40100H000 | 47-4 | 65321H40100H000 | 48-1-4 | | |
| 61211H37200H000 | 46-4 | 65322H40100H000 | 48-1-3 | | |
| 61262-05300-000 | 46-6 | 65327H40100H000 | 48-1-6 | | |
| 61273H40101H000 | 46-8 | 65328H40100H000 | 48-1-5 | 92125-33GC0-000 | 25-2 |
| 61275H40100H000 | 46-9 | 68125H40110HS52 | 30-5-5 | 92125-33GC0-000 | 30-10 |
| 61282H40101H000 | 46-5 | 68125H40110HTL1 | 30-5-5 | 92125-33GC0-000 | 32-5 |
| 61311H40100H000 | 47-1 | 68125H40110HTL2 | 30-5-5 | 92125-33GC0-000 | 40-3 |
| 61315-45F00-000 | 47-3 | 68126H40110HS52 | 30-6-5 | 94411H40100H000 | 37-3 |
| 61421H40101H000 | 48-7-1 | 68126H40110HTL1 | 30-6-5 | 94414H40100H521 | 37-1 |
| 62100H40112H000 | 47-10 | 68126H40110HTL2 | 30-6-5 | 95700H05310H000 | 27-21 |
| 62113H40110H000 | 47-10-2 | 68131H40100HBLA | 32-2-3 | 95729-053G0-000 | 27-22 |
| 62115H40101H000 | 47-10-3 | 68131H40100HBLA | 32-4-3 | 99011-01X50-029 | 38-2 |
| 62129H40110H000 | 47-10-1 | 68131H40100HSIL | 32-2-3 | | |
| 62313H40101H000 | 47-9 | 68131H40100HSIL | 32-4-3 | | |
| 63111H40100H000 | 36-1 | 68165H40100HS52 | 32-4-2 | | |
| 63112H40000H000 | 36-7 | 68165H40100HTL1 | 32-4-2 | | |
| 63113H40100H000 | 36-14 | 68165H40100HTL2 | 32-4-2 | | |
| 63121H40100H000 | 36-12 | 68167H40100HS52 | 32-2-2 | | |

DACHANGJIANG GROUP CO. , LTD.